

1993

LAND CORNER RECORDATION CERTIFICATE
Filing Requirement of Act 74, Mich. P.A. 1970

For corners in

Manistee (County) Located In: Corner Code #

1. Public Land Survey	T	21N	R	13W	K-4
	T		R		
	T		R		
	T		R		
2. Property Controlling in Section:	S	13	T	21N	R 13W 13-10
	S		T		
3. Miscellaneous Property in Sec.	S		T		
	S		T		

COMMISSION

REGISTER'S OFFICE
MANISTEE COUNTY
#93-262 AT 10:30 A.M.
MAY - 7 1993

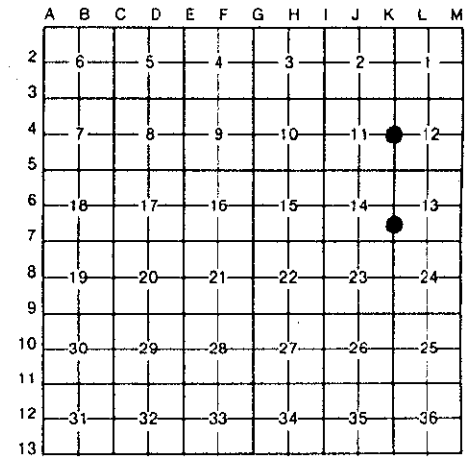
Penny A. Peper
REGISTER OF DEEDS

Register of Deeds Stamp & File Number

4. Lot No. _____, Recorded Plat _____
5. Private Claims _____

I, Norman C. Caldwell, in a field survey on September, 1992, do hereby certify that under requirements of P.A. 74, Michigan P.A. of 1970, the corner points mentioned in lines 1 and 2 above were in conformance with regulations and rules therefore as required in the current manual of survey instructions of the United States Department of the Interior, Bureau of Land Management or by a decree of a Court of Law and/or that the corner points mentioned in lines 3, 4 and 5 above were in conformance with the rules of the Michigan Board of Land Surveyors or by a Decree of a Court of Law; established, re-established, monumented, re-monumented, recovered, found as expressed below:

NOTE: Not more than 4 corners, all in the same town and range, may be recorded on this certificate.

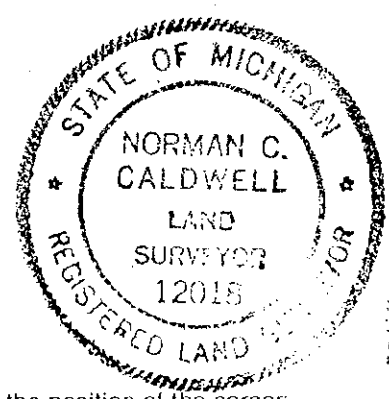


A. Description of original monument and accessories and/or subsequent restoration:

K-4 Post Placed by J. Brink, 1838 13-10 This position not established by original government survey.
14" W. Pine S57°E 10 lks. (6.60')
8" Aspen S62°W 111 lks. (73.26')

B. Description of corner evidence found and/or method applied in restoring or reestablishing corner:

K-4 1/4 cor., Sec. 11 & 12, T21N-R13W 13-10 S 1/16 cor., Sec. 13 & 14, T21N-R13W
1981± Survey by A.M. Slawinski per Liber 1, page 654 & 655
Fnd. 3/4" hex bar
S10°W 49.92' 10" Oak
S45°W 87.36' 8" W. Oak
N25°E 95.64' 22" R. Oak
No Subsequent Record
1976, Perry McPherson, L.S. #12023, Liber 76, pg. 30 found 1 1/2" pipe
S16°W 50.00' 8" Oak
S58°W 87.50' 8" Oak
N70°W 107.57' N. leg tower #677



C. Description of monument for corner and accessories established to perpetuate locating the position of the corner:

K-4 1/4 cor., Sec. 11 & 12, T21N-R13W 13-10 S 1/16 cor., Sec. 13 & 14, T21N-R13W
Fnd. record 3/4" hex. bar per L. 1, pg. 654, replaced w/60" L. x 6" D. conc. post w/brass tablet and is accepted as the best available evidence of the position of the original corner.
N01°W 86.78' 14" B. Oak
S11°W 50.09' 14" B. Oak (R)
S55°W 87.41' 10" W. Oak (R)
N72°W 107.34' N. leg of steel tower (R)
East 1.0' Carsonite Witness Post
Placed 5/8" iron rod w/alum. cap. This position not established by original government survey. This monument is accepted as a careful and faithful determination of the position of the cor.
N06°W 9.33' 5" R. Maple
S66°W 82.25' 5" R. Maple
S06°W 89.50' 9" R. Maple
S73°E 44.71' 8" W. Oak
East 1.0' Carsonite Witness Post

Corner K-4 verified by the Manistee County Peer Group pursuant to P.A. 128 of 1915, as amended by P.A. 245 of 1990, as amended. Date of Peer Review: APRIL 5 1992

Signed by *Norman C. Caldwell*

Date 12 JAN 93

Surveyor's Michigan License No. 12018