

1993

LAND CORNER RECORDATION CERTIFICATE
Filing Requirement of Act 74, Mich. P.A. 1970

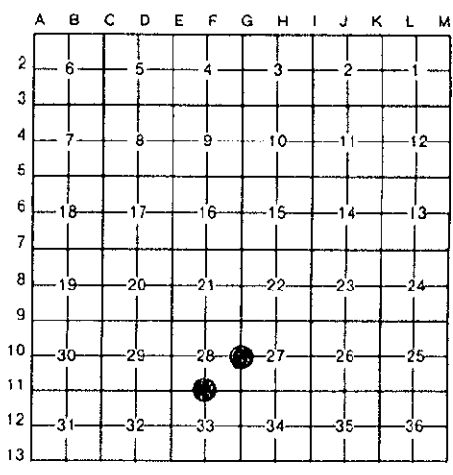
COMMISSION

For corners in

Manistee (County) Located In: Corner Code #/
1. Public Land Survey T 21N R 14W G-10 F-11
2. Property Controlling In Section S T R
3. Miscellaneous Property in Sec. S T R

REGISTER'S OFFICE MANISTEE COUNTY
493-497 At 3:25 p.m.
AUG 18 1993
Penny A. Pappas REGISTER OF DEEDS
Register of Deeds Stamp & File Number

4. Lot No. , Recorded Plat
5. Private Claims



I, Norman C. Caldwell, in a field survey on May, 1993, do hereby certify that under requirements of P.A. 74, Michigan P.A. of 1970, the corner points mentioned in lines 1 and 2 above were in conformance with regulations and rules therefore as required in the current manual of survey instructions of the United States Department of the Interior, Bureau of Land Management or by a decree of a Court of Law and/or that the corner points mentioned in lines 3, 4 and 5 above were in conformance with the rules of the Michigan Board of Land Surveyors or by a Decree of a Court of Law; established, re-established, monumented, re-monumented, recovered, found as expressed below:

NOTE: Not more than 4 corners, all in the same town and range, may be recorded on this certificate.

A. Description of original monument and accessories and/or subsequent restoration:

- G-10 Post placed by J. Brink in 1842 subdivision survey. S31°E 14 lks. (9.2') 8" Hemlock N79½°W 10 lks. (6.6') 8" Hemlock
F-11 Post placed by John Brink in 1842 subdivision survey. S11°W 33 lks. (21.8') 12" Hemlock N68°E 42 lks. (27.7') 10" White Pine

B. Description of corner evidence found and/or method applied in restoring or reestablishing corner:

- G-10 1/4 cor., Sec. 27 & 28, T21N-R14W No subsequent record.
F-11 1/4 cor., Sec. 28 & 33, T21N-R14W No subsequent record.

NOTE: This form is revised to meet requirements of Manistee County Peer Review Committee.

C. Description of monument for corner and accessories established to perpetuate locating the position of the corner:

- G-10 1/4 cor., Sec. 27 & 28, T21N-R14W Placed 5" x 5" x 36" conc. monument w/brass tablet by record dist. from South and verified by original dist. to old ridge along Lake Shore North and is accepted as a careful and faithful reestablishment of the position of the original corner.
F-11 1/4 cor., Sec. 28 & 33, T21N-R14W Placed 5" x 5" x 36" conc. monument w/brass tablet by single proportion between acceptable section corners 1/2 mile East and West, and is accepted as a careful and faithful reestablishment of the position of the original corner.

Corner G-10 ratified by the Manistee County Peer Group pursuant to P.A. 123 of 1995, as amended by P.A. 345 of 1990, as amended. Date of Peer Review: APRIL 5, 1993
Corner F-11 ratified by the Manistee County Peer Group pursuant to P.A. 123 of 1995, as amended by P.A. 345 of 1990, as amended. Date of Peer Review: JUNE 7, 1993
APPROVED JUN 7 1993

Signed by Norman C. Caldwell Surveyor's Michigan License No. 12018 Date 2 JUNE 1993

