

1993

LAND CORNER RECORDATION CERTIFICATE
Filing Requirement of Act 74, Mich. P.A. 1970

COMMISSION

For corners in

Manistee (County) Located In: Corner Code #/
1. Public Land Survey T 21N R 14W G-12, H-11
2. Property Controlling in Section S T R
3. Miscellaneous Property in Sec. S T R

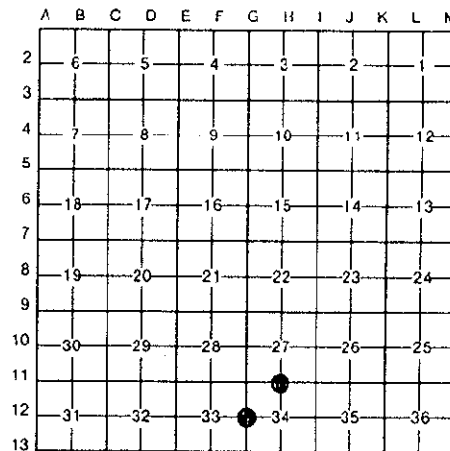
REGISTER'S OFFICE
MANISTEE COUNTY

#93-499 AT 4.05 p.m.
AUG 18 1993

Penny A. Pappas
REGISTER OF DEEDS

Register of Deeds Stamp & File Number

- 4. Lot No. , Recorded Plat
5. Private Claims



I, Norman C. Caldwell, in a field survey on May, 19 93, do hereby certify that under requirements of P.A. 74, Michigan P.A. of 1970, the corner points mentioned in lines 1 and 2 above were in conformance with regulations and rules therefore as required in the current manual of survey instructions of the United States Department of the Interior, Bureau of Land Management or by a decree of a Court of Law and/or that the corner points mentioned in lines 3, 4 and 5 above were in conformance with the rules of the Michigan Board of Land Surveyors or by a Decree of a Court of Law; established, re-established, monumented, re-monumented, recovered, found as expressed below:

NOTE: Not more than 4 corners, all in the same town and range, may be recorded on this certificate.

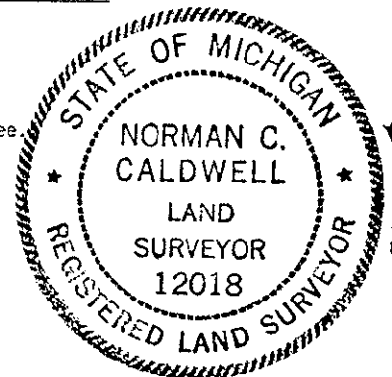
A. Description of original monument and accessories and/or subsequent restoration:

- G-12 Post placed by John Brink in 1842 subdivision survey. S60°W 14 lks. (9.2') 10" Hemlock N66°E 16 lks. (10.6') 18" Yellow Pine
H-11 Post placed by John Brink in 1842 subdivision survey. S30°E 17 lks. (11.2') 14" White Oak N38°E 26 lks. (17.6') 10" White Pine

B. Description of corner evidence found and/or method applied in restoring or reestablishing corner:

- G-12 1/4 cor., Sec. 33 & 34, T21N-R14W Fence North and South
H-11 1/4 cor., Sec. 27 & 34, T21N-R14W No Subsequent Record.

NOTE: This form is revised to meet requirements of Manistee County Peer Review Committee



Corner H-11 ratified by the Manistee County Peer Group pursuant to P.A. 123 of 1915, as amended by P.A. 345 of 1990, as

C. Description of monument for corner and accessories established to perpetuate locating the position of the corner:

- G-12 1/4 cor., Sec. 33 & 34, T21N-R14W Placed 2"x 30" stainless pipe w/brass cap at midpoint between acceptable Section corners holding existing N-S fence for alignment and is accepted as a careful and faithful reestablishment of the position of the org. cor. N15°W 73.02' 10" Wild Cherry N58°W 69.98' 3" W. Oak S65°W 28.32' 8" Red Pine East 1.0' Carsonite Witness Post N01°09'12"E 446.50' 1" iron pipe #12018
H-11 1/4 cor., Sec. 27 & 34, T21N-R14W Found 5" x 5" conc. monument w/brass cap #16923 at intersection of old fences East, West & South and is accepted as the best available evidence of the position of the original corner. N54°W 6.92' 8" Red Pine N83°E 95.75' 7" White Oak S29°W 52.90' 7" Maple N60°E 49.51' 3/4" pipe w/#12018 cap

Signed by [Signature] Date 2 JUNE 1993
Surveyor's Michigan License No. 12018

Corner G-12 ratified by the Manistee County Peer Group pursuant to P.A. 123 of 1915, as amended by P.A. 345 of 1990, as