

JAN 24 1996

COMMISSION

LAND CORNER RECORDATION CERTIFICATE
Filing Requirement of Act 74, Mich. P.A. 1970

For corners in

Table with columns: MANISTEE (County), Located In:, Corner Code -#. Rows include Public Land Survey, Property Controlling in Section, Miscellaneous Property in Sec.

REGISTER'S OFFICE
MANISTEE COUNTY

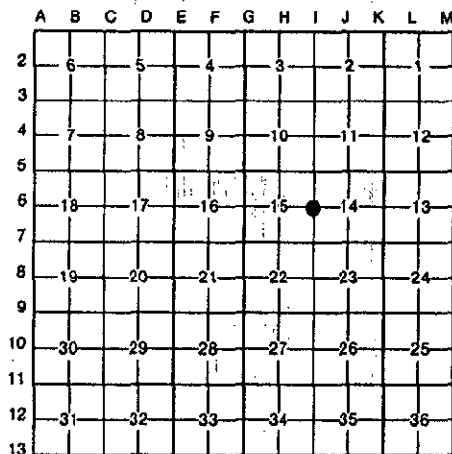
#94-261 AT 11:05 A.M.
JUN 15 1994

Penny A. Pagan
REGISTER OF DEEDS

Register of Deeds Stamp & File Number

4. Lot No. Recorded Plat
5. Private Claims

I, Sammy S. Barnett, in a field survey on April, 19 94, do hereby certify that under requirements of P.A. 74, Michigan P.A. of 1970, the corner points mentioned in lines 1 and 2 above were in conformance with regulations and rules therefore as required in the current manual of survey instructions of the United States Department of the Interior, Bureau of Land Management or by a decree of a Court of Law and/or that the corner points mentioned in lines 3, 4 and 5 above were in conformance with the rules of the Michigan Board of Land Surveyors or by a Decree of a Court of Law; established, re-established, monumented, re-monumented, recovered, found as expressed below:



NOTE: Not more than 4 corners, all in the same town and range, may be recorded on this certificate.

A. Description of original monument and accessories and/or subsequent restoration:

I-6 1/4 corner, Sec's. 14 & 15, T21N,R17W.

1839, John Brink D.S., G.L.O. Page 423
Set Wood Post at South line of Indian Reservation line

- #1 Birch 9" S 61° E 271k. (17.82')
#2 Hemlock 9" S 52° W 191k. (12.54')

April 10, 1991, Bruce Jenema Act 74, L91 P 326
Found nail, replaced with 1/2" Re-Rod w/cap

- #3 Power Pole N 10° W 23.60'
#4 Power Pole N 80° W 127.65'
#5 R. Pine 8" South 24.80'

B. Description of corner evidence found and/or method applied in restoring or reestablishing corner:

I-6 1/4 corner, Sec's. 14 & 15, T21N,R17W.

On April 30, 1994 found R.L.S. capped Re-Rod (Jenema), under re-rod found a 1 1/2" x 24". Also found R.L.S. cap RE-Rod 33' North of corner and found a 1' Iron Pipe 33' South of corner. Condition of record witnesses are; #1 Gone #2 Gone #3 Found in good cond. #4 Found in good cond. #5 Found in good cond.

C. Description of monument for corner and accessories established to perpetuate locating the position of the corner:

I-6 1/4 corner, Sec's. 14 & 15, T21N,R17W.

Replaced capped Re-Rod with a Manistee County monument ( 2 1/2" x 30" steel pipe with brass cap ) placed in a monument box, an is accepted as a careful and faithful reestablishment of the position of the original corner.

- (OBT) #3 Power Pole N 10° W 24.08'
(OBT) #4 Power Pole N 80° W 127.68' (60d spike in SW side of pole)
(OBT) #5 R. Pine 8" S 05° W 24.25' (60d spike in East side of tree)
Cut off P.P. for Gate post S 66° E 101.55' (60d spike in NE side of pole)

Corner I-6 #1-61
ratified by the Manistee County Peer Group according to the county plan adopted pursuant to P.A. 345 of 1990, as amended, (being the State Survey and Re-monument Act, MCL 54.261 et. seq.). Date of Peer Review: 6/16/94

Signed by Sammy S. Barnett
Surveyor's Michigan License No. 16923

Date 6/3/94

