

149111

SECTION

LAND CORNER RECORDATION CERTIFICATE

Filing Requirement of Act 74, Mich. P.A. 1970

For corners in

Manistee Located In: Corner Code #  
 (County)

1. Public Land Survey T 21N R 17W K-02  
 T \_\_\_ R \_\_\_ East 1/4 Cor.  
 T \_\_\_ R \_\_\_ Sec. 2  
 T \_\_\_ R \_\_\_

2. Property Controlling S \_\_\_ T \_\_\_ R \_\_\_  
 in Section S \_\_\_ T \_\_\_ R \_\_\_

3. Miscellaneous S \_\_\_ T \_\_\_ R \_\_\_  
 Property in Sec. S \_\_\_ T \_\_\_ R \_\_\_

4. Lot No. \_\_\_\_\_, Recorded Plat \_\_\_\_\_

5. Private Claims \_\_\_\_\_

REGISTER'S OFFICE  
MANISTEE COUNTY

98-243 at 9:20 AM  
JUN 29 1998

*Richard J. ...*

REGISTER OF DEEDS

Register of Deeds Stamp & File Number

I, Anthony M. Slawinski, in a field survey on May 18, 19 98 do hereby state that under requirements of P.A. 74, Michigan P.A. of 1970, the corner points mentioned in lines 1 and 2 above were in conformance with regulations and rules therefore as required in the current manual of survey instructions of the United States Department of the Interior, Bureau of Land Management or by a decree of a Court of Law and /or that the corner points mentioned in lines 3, 4 and 5 above were in conformance with the rules of the Michigan Board of Land Surveyors or by a Decree of a Court of Law; established, re-established, monumented, recovered, found as expressed below:

NOTE: Not more than 2 corners, all in the same town and range, may be recorded on this certificate.

A. Description of original monument and accessories and/or subsequent restoration:

- Set by John Brink in 1839
- 1. White Pine 12" N 46° E 55 links (Gone)
- 2. White Pine 12" S 58° W 44 links (Gone)

B. Description of corner evidence found and/or method applied in restoring or reestablishing corner:

Information Referenced

- Duffy's Addition to the City of Manistee (5-21-1881) Volume 2 of Plats, Page 19
- The Dunes Plat (1990) Liber 6, Pages 59, 60 & 61
- Survey Certificate by Slawinski (1971)
- Manistee Industrial Park Plat (5-22-1990) Liber 6, Pages 56, 57 & 58
- Survey Certificate by Slawinski (1973)
- Survey Certificate by Slawinski (1991)
- Field Notes by Slawinski (1973)
- Survey Certificate by Jenema (1991)
- 3. SE 76.38' NW Corner of house 4.4' high (Good)
- 4. SSW 80.43' 60D on W. Side Street (Gone)
- 5. SE 27.64' Power Pole (Good)
- 6. NE 34.00' 5" Poplar (Gone)
- 7. N 80° W 25.89' Power Pole (Gone)
- 8. N 25° W 70.32' Top Of Fire Hydrant (Gone)

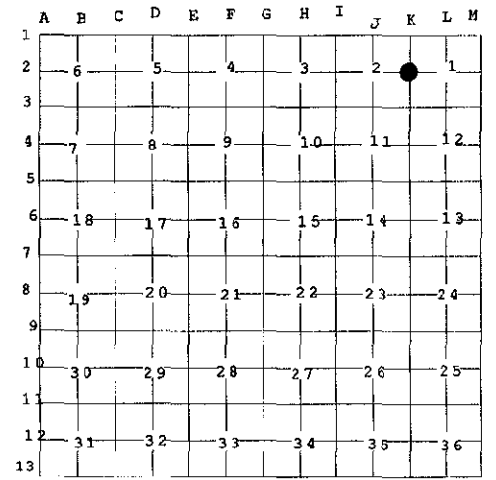
On May 18, 1998, I Anthony Slawinski and Abonmarche found a 1/2" iron bar, inside a monument box in the approximate center of Washington street.

C. Description of monument for corner and accessories established to perpetuate locating the position of the corner:

On May 18, 1988, I installed a Manistee County Monument, within a monument box, in the exact location of the above mentioned 1/2" iron rod, as a careful and Faithful re-establishment of the position of the original corner, and witnessed by:

- 3. S 30° E 76.38' NW Corner of house, 4.4' high
- 5. S 62° E 27.80' Power Pole, spike in the South side
- 9. N 20° W 72.28' Top Center of a Fire Hydrant (New Fire Hydrant)
- 10. S 84° W 29.71' Power Pole, spike in the South Side
- 11. S 85° E 33.08' 1" iron pipe

Note: Monument box is in the center line of Washington Street. North 2538.52 feet to Northeast Corner of Section 2, T21N., R17W.



ratified by the Manistee County Peer Group according to the county plan adopted pursuant to P.A. 345 of 1990, as amended, (being the State Survey and Remonument Act MCL 54.261 (3)(a)). Date of Peer Review: Anthony M. Slawinski JUN 2 1998



Signed by Anthony M. Slawinski  
Surveyor's Michigan License No. 13597

Date 6-1-98