

DEC 29 1996

COMMISSION

LAND CORNER RECORDATION CERTIFICATE
Filing Requirement of Act 74, Mich. P.A. 1970

For corners in

Manistee (County) Located In: Corner Code #
1. Public Land Survey T 21N R 17W K-03
2. Property Controlling in Section S T R
3. Miscellaneous Property in Sec. S T R

REGISTER'S OFFICE
MANISTEE COUNTY

97-391 at 3:35pm
OCT 17 1997

Reborah Siv
REGISTER OF DEEDS

Register of Deeds Stamp & File Number

4. Lot No. Recorded Plat
5. Private Claims

I, Anthony M. Slawinski, in a field survey on July 29, 19 97 do hereby state that under requirements of P.A. 74, Michigan P.A. of 1970, the corner points mentioned in lines 1 and 2 above were in conformance with regulations and rules therefore as required in the current manual of survey instructions of the United States Department of the Interior, Bureau of Land Management or by a decree of a Court of Law and for that the corner points mentioned in lines 3, 4 and 5 above were in conformance with the rules of the Michigan Board of Land Surveyors or by a Decree of a Court of Law; established, re-established, monumented, recovered, found as expressed below:

NOTE: Not more than 2 corners, all in the same town and range, may be recorded on this certificate.

A. Description of original monument and accessories and/or subsequent restoration:
K-03 Southeast Section Corner of Section 2, T21N., R17W.

Set by John Brink in 1837

Sec. Post Corner sections 1, 2, 11 & 12

- 1. W. Pine 10" N 45° W 57 links (Gone)
2. W. Oak 12" S 39° E 93 links (Gone)

B. Description of corner evidence found and/or method applied in restoring or reestablishing corner:
K-03 Southeast Section Corner of Section 2, T21N., R17W.

Found 5/8" Iron Bar by Slawinski in 1989 witnessed by:

- 3. NW 39.36' Power Pole (Gone)
4. NE 65.85' Telephone Pole
5. SE 33.30' Telephone Pole (Gone)
6. SW 55.36' Telephone Pole

Also referenced:

GLO Field notes by John Brink (1837), Book 1, Page 430

Traverse sheet & field notes by Slawinski (1990)

Engelmann Addition Plat, Liber 33, Pages 158 & 159 (5-23-1881)

On July 29, 1997, I (Anthony Slawinski) & Abonmarche found a 5/8" Iron Bar

C. Description of monument for corner and accessories established to perpetuate locating the position of the corner:
K-03 Southeast Section Corner of Section 2, T21N., R17W

On July 29, 1997, I installed a Manistee County Monument, within a monument box, in the exact location of the above mentioned 5/8" iron bar as a careful and faithful re-establishment of the original corner, and witnessed by:

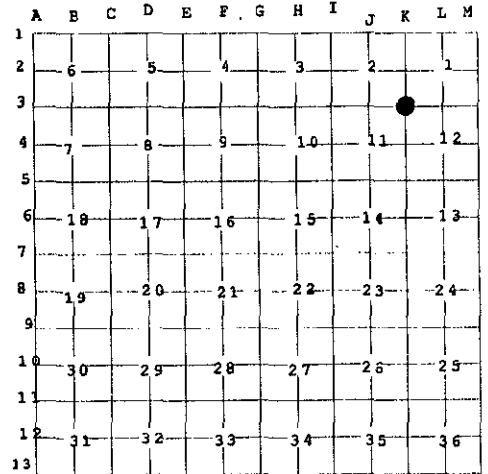
- 4. N 23° E 66.13' Power Pole (Spike in the Southeast side)
6. S 67° W 55.17' Power Pole (Spike in the Southeast side)
7. N 25° W 42.70' Power Pole (Spike in the Northeast side)
8. S 43° E 43.01' Power Pole (Spike in the Northeast side)

Corner was set at the intersection of the center lines of 5th Ave. & Washington Street



Signed by Anthony M. Slawinski
Surveyor's Michigan License No. 13597

Date 10-2-97



Corner ratified by the Manistee County Peer Group according to the county plan adopted pursuant to P.A. 345 of 1990, as amended, (being the State Survey and Remonument Act, MCL 54.26; et. seq.). Date of Peer Review: Anthony M. Slawinski OCT 7 1997