

DEC 20 1996

COMMISSION

LAND CORNER RECORDATION CERTIFICATE

Filing Requirement of Act 74, Mich. P.A. 1970

For corners in

Manistee: \_\_\_\_\_ Located In: \_\_\_\_\_ Corner Code # \_\_\_\_\_  
 (County)

1. Public Land Survey T 21N R 17W K-05  
 T \_\_\_\_\_ R \_\_\_\_\_ Southeast  
 T \_\_\_\_\_ R \_\_\_\_\_ Corner of  
 T \_\_\_\_\_ R \_\_\_\_\_ Section 11

2. Property Controlling S \_\_\_\_\_ T \_\_\_\_\_ R \_\_\_\_\_  
 in Section S \_\_\_\_\_ T \_\_\_\_\_ R \_\_\_\_\_

3. Miscellaneous S \_\_\_\_\_ T \_\_\_\_\_ R \_\_\_\_\_  
 Property in Sec. S \_\_\_\_\_ T \_\_\_\_\_ R \_\_\_\_\_

4. Lot No. \_\_\_\_\_, Recorded Plat \_\_\_\_\_

5. Private Claims \_\_\_\_\_

REGISTER'S OFFICE  
MANISTEE COUNTY

91-393 at 3:45pm  
OCT 17 1997

*Rebecca Dix*

REGISTER OF DEEDS

Register of Deeds Stamp & File Number

I, Anthony M. Slawinski, in a field survey on July 18, 1997 do hereby state that under requirements of P.A. 74, Michigan P.A. of 1970, the corner points mentioned in lines 1 and 2 above were in conformance with regulations and rules therefore as required in the current manual of survey instructions of the United States Department of the Interior, Bureau of Land Management or by a decree of a Court of Law and /or that the corner points mentioned in lines 3, 4 and 5 above were in conformance with the rules of the Michigan Board of Land Surveyors or by a Decree of a Court of Law; established, re-established, monumented, recovered, found as expressed below:

NOTE: Not more than 2 corners, all in the same town and range, may be recorded on this certificate.

A. Description of original monument and accessories and/or subsequent restoration:  
K-05 Southeast Section Corner of Section 11, T21N., R17W.

Set by John Brink in 1837

Set Post

- 1. Beech 14" N 58° W 16 links (Gone)
- 2. Beech 18" S 52° E 50 links (Gone)

B. Description of corner evidence found and/or method applied in restoring or reestablishing corner:

K-05 Southeast Section Corner of Section 11, T21N., R17W.

PK Nail found by Abonmarche (1996) witnessed by:

- 3. N 57° E 40.02' Southwest Corner of Mailbox
- 4. N 35° E 43.05' Power Pole (Nail in East Side)
- 5. N 20° W 38.80' Power Pole (Nail & Cap in Southwest Side)

On July 18, 1997, I Anthony Slawinski and Abonmarche found a PK nail. Below the PK nail a Railroad Spike was found. Below the Spike a 1" Iron Pipe was found.

Also referenced:

- GLO Field notes by Brink (1837), Book 2, P 428
- Abonmarche Field Notes (1996)
- Survey by Slawinski (1991)
- Survey by Vaillencourt (1964)
- Swanson Plat((12-4-70), Liber 6, Page 7
- Lake Winnogene Plat(6-21-1881), Liber 24, Page 20
- Golden Acres Addition to the City Of Manistee (6-27-60) Liber 4, Page 45

C. Description of monument for corner and accessories established to perpetuate locating the position of the corner:  
K-05 Southeast Section Corner of Section 11, T21N., R17W.

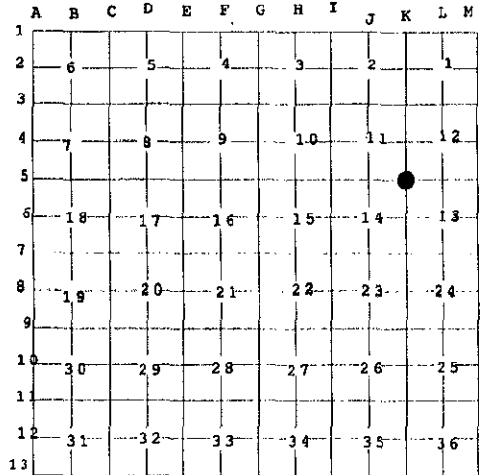
On July 18, 1997, I installed a Manistee County Monument, within a monument box, in the exact location of the above mentioned PK Nail, Spike and 1" Iron Pipe as a careful and faithful re-establishment of the position of the original corner, and witness by:

- 4. N 35° E 43.05' Power Pole (Nail in the East Side)
  - 5. N 20° W 38.80' Power Pole (Nail & Cap in the Southwest Side)
  - 6. S 42° W 117.60' Southeast Corner of House (Concrete block foundation)
  - 7. S 30° E 105.26' Northwest corner of garage (Concrete block foundation)
- Monument was set in the intersection of the centerlines of 12<sup>th</sup> Street and Maple Street  
 Monument was set in the intersection of the center lines of Maple Street and 12<sup>th</sup> Street



Signed by Anthony M. Slawinski  
Surveyor's Michigan License No. 13597

Date 10-2-97



ratified by the Manistee County Peer Group according to the county plan adopted pursuant to P.A. 345 of 1990, as amended, (being the State Survey and Remonument Act, MCL 207.261 et. seq.) Date of Peer Review: Anthony M. Slawinski OCT 7 1997