

**LAND CORNER RECORDATION CERTIFICATE**  
 Filing Requirement of Act 74, Mich. P.A. 1970

**REGISTER'S OFFICE**  
**MANISTEE COUNTY**

95-349 at 1:20 PM  
 SEP - 7, 1995

*Reborah Six, Dep.*  
**REGISTER OF DEEDS**

For corners in

MANISTEE  
 (County)

Located In:

Corner Code #

1. Public Land Survey

T 22N R 16W

E-4

2. Property Controlling in Section

S \_\_\_\_\_ T \_\_\_\_\_ R \_\_\_\_\_

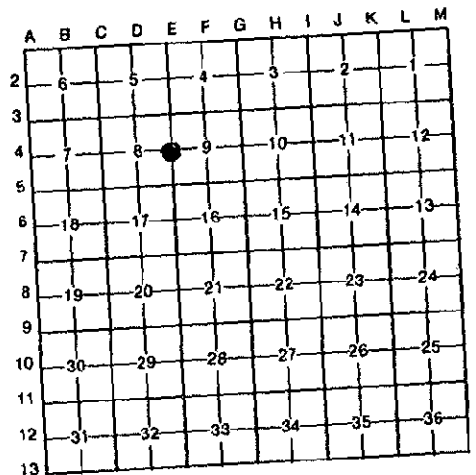
3. Miscellaneous Property in Sec.

S \_\_\_\_\_ T \_\_\_\_\_ R \_\_\_\_\_

4. Lot No. \_\_\_\_\_, Recorded Plat \_\_\_\_\_

5. Private Claims \_\_\_\_\_

Register of Deeds Stamp & File Number



I, John Schulke, in a field survey on July 12th, 19 95, do hereby certify that under requirements of P.A. 74, Michigan P.A. of 1970, the corner points mentioned in lines 1 and 2 above were in conformance with regulations and rules therefore as required in the current manual of survey instructions of the United States Department of the Interior, Bureau of Land Management or by a decree of a Court of Law and/or that the corner points mentioned in lines 3, 4 and 5 above were in conformance with the rules of the Michigan Board of Land Surveyors or by a Decree of a Court of Law; established, re-established, monumented, re-monumented, recovered, found as expressed below:

**NOTE: Not more than 4 corners, all in the same town and range, may be recorded on this certificate.**

A. Description of original monument and accessories and/or subsequent restoration:  
 In 1839, J. Brink (Deputy surveyor) set a wooden post with the following corner references:  
 Hemlock 13" N77°E 42 lks.  
 W Pine 18" N22°W 27 lks.

Undated, Manistee Co. Rd. Commission record indicate an iron pipe at the corner. The following corner references:  
 3. corner fence post West 36.50 ft.  
 4. Cedar 6" SE 50.66 ft.  
 5. fence post NE 58.85 ft.

In 1848, B.O. Risdon found no evidence of 1839 survey. Set a wooden post by proportional measurement.  
 E-3 North 40.15 chains (2649.9 ft.)  
 E-3 South 40.14 chains (2649.2 ft.)  
 The following corner references:  
 1. Hemlock 14" S21°W 10 lks.  
 2. Hemlock 12" N81°E 18 lks.

In 1977, T. O'Brian found 1/2" iron pipe (see LCRC #77-20 in the Manistee Co. Register of Deed's Office). The following corner references:  
 6. Cedar 6" S85°W 38.9 ft.  
 7. Power pole S70°E 28.0 ft.

B. Description of corner evidence found and/or method applied in restoring or reestablishing corner:  
 In May 1994, found 1/2" iron 3 inches below the surface of a paved road.  
 In July 1995, recovered same iron in center of Bar Lake Road 3 inches below the surface of a paved road. Also found railroad spike 3 feet below the surface of the road. The road was raised about 3 feet. References 1, 2, 4, 5, 6 and 7 were not recovered. Distances to the following corners:  
 E-3 (NE corner of Section 8) 2649.78 ft. by Schulke  
 E-5 (SE corner of Section 8) 2656.62 ft. by Schulke

Corner E-04 ratified by the Manistee County Peer Group according to the county plan adopted pursuant to P.A. 345 of 1990, as amended, (being the State Survey and Remonument Act, MCL 54.261 et. seq.). Date of Peer Review: SEP 5 1995 *Curtis R. Long*



C. Description of monument for corner and accessories established to perpetuate locating the position of the corner:  
 Considering the position of the 1/2" iron pipe to be the perpetuated location of the original government corner, I replaced the iron pipe with a 2" dia. X30" iron pipe monument with a brass cap stamped to identify the corner in a monument box. The following corner references:

- |     |                                     |    |       |           |
|-----|-------------------------------------|----|-------|-----------|
| 3.  | 2nd post to the West                | 8" | West  | 36.50 ft. |
| 8.  | W Pine                              |    | N27°E | 95.73 ft. |
| 9.  | Power pole                          |    | S14°E | 88.32 ft. |
| 10. | Balsam                              | 5" | S75°W | 35.88 ft. |
| 11. | Wild Cherry                         | 8" | S43°W | 53.18 ft. |
| 12. | 5/8" rebar South side of fence post |    | West  | 33.25 ft. |

**NOTE: 60-D Spike placed in references #8, 10 and 11.**

Signed by John C. Schulke  
 Surveyor's Michigan License No. RLS-30894

Date July 31, 1995