

LAND CORNER RECORDATION CERTIFICATE
Filing Requirement of Act 74, Mich. P.A. 1970

For corners in

MANISTEE
 (County)

Located In:

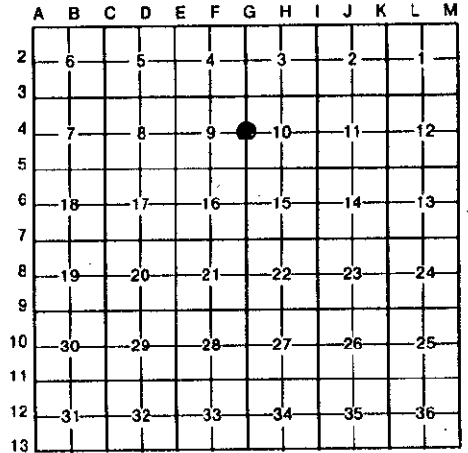
Corner Code #

- | | | |
|------------------------------------|-------------------------|-------|
| 1. Public Land Survey | T 22N R 16W | G-4 |
| | T _____ R _____ | _____ |
| | T _____ R _____ | _____ |
| | T _____ R _____ | _____ |
| 2. Property Controlling in Section | S _____ T _____ R _____ | _____ |
| | S _____ T _____ R _____ | _____ |
| 3. Miscellaneous Property in Sec. | S _____ T _____ R _____ | _____ |
| | S _____ T _____ R _____ | _____ |

REGISTER'S OFFICE
MANISTEE COUNTY
 95-353 at 1:30 pm
SEP - 7 1995
Deborah A. Dep.
REGISTER OF DEEDS

Register of Deeds Stamp & File Number

4. Lot No. _____, Recorded Plat _____
5. Private Claims _____



I, John Schulke, in a field survey on July 19th, 1995, do hereby certify that under requirements of P.A. 74, Michigan P.A. of 1970, the corner points mentioned in lines 1 and 2 above were in conformance with regulations and rules therefore as required in the current manual of survey instructions of the United States Department of the Interior, Bureau of Land Management or by a decree of a Court of Law and/or that the corner points mentioned in lines 3, 4 and 5 above were in conformance with the rules of the Michigan Board of Land Surveyors or by a Decree of a Court of Law; established, re-established, monumented, re-monumented, recovered, found as expressed below:

NOTE: Not more than 4 corners, all in the same town and range, may be recorded on this certificate.

A. Description of original monument and accessories and/or subsequent restoration:
 In 1839, J. Brink set a wood post at the corner with the following corner references:

1. B. Ash 8" N43 1/2°E 28 lks.
2. Beech 6" N61°W 36 lks.

In Dec. 1960, Wm. Downey (RLS MI. STATE HWY. DEPT.) set a standard bronz marker on 1" pipe. Set this corner in line with corners North-South and midway between the Southwest corner of Section 10 and Northwest corner of Section 10. Center line of M-22 is West 47.94 ft. on 1963 Hwy. Plans. The following corner references:

3. Pear 15" S75°W 119.06 ft.
4. Tel. Pole N73°W 89.79 ft.

B. Description of corner evidence found and/or method applied in restoring or reestablishing corner:

In July 1995, recovered Hwy. monument. Recovered references 5 and 6. References 1, 2, 3, 4, and 7 were not recovered. Distances to corners and occupations:

- | | | |
|-------------------------------------|------------|-------------|
| G-3 (Northeast corner of Section 9) | N0°38'36"E | 2673.59 ft. |
| G-5 (Southeast corner of Section 9) | S1°18'06"W | 2673.08 ft. |

Measurements by Schulke and Bearings reference to Slawinski survey.

In 1976, A. Slawinski used corner for survey. Set right-of-way stake on M-22 (see Liber 1 of surveys, page 346 in the Manistee Co. Register of Deed's Office). No references.

In 1979, A. Slawinski restored corner from previous survey and has pictures on file (see Liber 1 of surveys, page 589 in the Manistee Co. Register of Deed's Office). Also found hole from Hwy. monument and set concrete monument with the following corner references:

- | | | |
|------------------------------|----------|-----------|
| 5. 1/2" re-rod | N89°50'W | 14.87 ft. |
| 6. PK in center line of M-22 | N89°50'W | 47.87 ft. |
| 7. 1/2" re-rod | N89°50'W | 80.87 ft. |

Corner G-4 ratified by the Manistee County Peer Group according to the county plan adopted pursuant to P.A. 345 of 1990, as amended, (being the State Survey and Remonument Act, MCL 54.261 et seq.). Date of Peer Review: *[Signature]*

SEP 5 1995

C. Description of monument for corner and accessories established to perpetuate locating the position of the corner:

Accepted the Michigan Department of Transportation monument as a proper restoration of corner. The following corner references:

5. Re-bar 1/2" N82°W 14.83 ft.
8. Power pole S27°W 63.15 ft.
9. Sug. Maple 28" N10°E 315.20 ft. with a 60-D spike on the East side of tree.
10. SW corner of garage foundation S55°E 406.34 ft.
11. capped iron pipe 3/4" N5°08'01"W 671.08 ft. (Slawinski bearing datum) on West R/W of M-22 (RLS-30894)

Signed by John C Schulke

Date July 31, 1995

Surveyor's Michigan License No. RLS-30894