

# LAND CORNER RECORDATION CERTIFICATE

Filing Requirement of Act 74, Mich. PA 1970

**PAGE 1 of 2**

For Corners In: Manistee (County)	Located In	Corner Code #
1. Public Land Survey	T <u>24N</u> R <u>14W</u>	H13
	T <u>23N</u> R <u>14W</u>	H1
2. Property Controlling in Section	S _____ T _____ R _____	_____
	S _____ T _____ R _____	_____
3. Miscellaneous Property in Section	S _____ T _____ R _____	_____
	S _____ T _____ R _____	_____

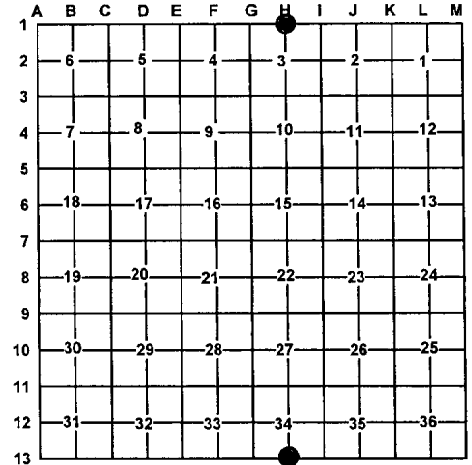
Register of Deeds Stamp & File Number

4. Lot No: \_\_\_\_\_ Recorded Plat: \_\_\_\_\_

5. Private Claims: \_\_\_\_\_

I, Craig W. McVean, in a field survey on May 20, 2008 do hereby state that under requirements of PA 74, Michigan PA of 1970, the corner points mentioned in lines 1 and 2 above were in conformance with regulations and rules therefore as required in the current manual of survey instructions of the United States Department of the Interior, Bureau of Land Management or by a decree of a Court of Law and/or that the corner points mentioned in lines 3, 4 and 5 above were in conformance with the rules of the Michigan Board of Land Surveyors or by a Decree of a Court of Law; established, re-established, monumented, recovered, found as expressed below:

**NOTE: Not more than 2 corners, all in the same town and range, may be recorded on this certificate.**



**A. Description of original monument and accessories and/or subsequent restoration:**

- H13-H1 – 1837 – Set Post – John Brink
- 1) Hemlock 9" – N12½°E 24 links
  - 2) Hemlock 8" – N35½°W 30 links
- GLO states swamp 10 chains to the East and 2 chains to the West.
- 1914 – Manistee County Surveyor's Record – N ¼ Sec. 3 – Petition Survey
  - Book "A" Page 194 By E. W. Muenscher - Testimony of Hopper
  - 3) Hemlock 10" S39½°W 35 links
  - 4) Hemlock 12" S32½°E 39 links
  - 1975 – P.A. 74 form by John I. Nelson (#21273), LCRC 75-43 (H13 – T24N, R14W) – Set 5/8" Rebar with R.L.S. Cap. Corner was set by GLO Proportion on tangent split. Corner falls 30 ft. West of existing fence line which meanders through swamp. No other physical evidence of old corner exists.
  - 5) Set nail with R.L.S. tag Northwest side 6" cedar (Azimuth) 34° - 17.24'
  - 6) Set nail with R.L.S. Tag North side 6" cedar (Azimuth) 108° - 9.88'
  - 7) Set nail with R.L.S. Tag Southwest side 6" popular (Azimuth) 322° - 24.83'
  - 2000 – LCRC #01-447 (H13 – T24N, R14W) – A. M. Slawinski South ¼ Corner of Section 34 (24-14) – On July 10, 2000, I Anthony M. Slawinski, along with a crew from Abonmarche, found a 5/8" x 18" iron rod w/cap #13603 (Verba). Remains of the fence line that Nelson calls for were found ±30' east of corner. The old fence did not run North and South, but meandered through the swamp. The Corner location fit with GLO swamp calls. We found no other evidence to dispute this Location for the corner. Condition of witnesses: #1 gone, #2 gone, #3 gone, #4 gone, #5 good, #6 good & #7 found stump badly decayed. Set a Manistee County Monument in the exact location as the above mentioned 5/8" iron rod as a

- careful and faithful reestablishment of the position of the original corner and witnessed by:
- 5) N34°E 17.28' – 13" Cedar (old nail gone, ste 40d spike on NW side of tree)
  - 6) S78°E 9.83' - 12" Cedar (old nail gone, set 40d spike on N. side of tree)
  - 8) N61°W 20.32' - 4" Maple (Set 40d spike in S. side of tree)
  - 9) S19°E 19.74' - 4" Maple (Set 40d spike in SW side of tree)
  - 2001 – LCRC #01-167 – A. M. Slawinski – PS #13597 (H1 – T23N – R14W) – H-01 North ¼ Section 3 (23-14) – On August 20, 2001, a field crew under my direction found no evidence of an existing corner. They determined a position using the single proportion method and placed a temporary spike in this location. The crew found no other evidence to dispute this location for the corner. North ¼ Section 3 (23-14). On August 20, 2001, a field crew under my direction placed a standard Manistee County Monument in the exact location of the above mentioned temporary spike as a careful and faithful establishment of the position of the original corner and witnesses by:
  - 10) East 24.75' South ¼ Corner of Section 34, T24N, R14W (Manistee County Monument)
  - 11) South 10.85' 5" Maple (set 40d spike in East side of tree)
  - 12) North 12.22' 5: Maple (set 40d spike in East side of tree)
  - 13) N80°W 27.59' 7: Maple (set 40d spike in North side of tree)
  - 14) S43°W 25.48' 6" Maple (set 40d spike in East side of tree)
- Corner is ±6" above grade and ±450' South of 13 Mile Road.

For B. and C. see Page 2 of 2.

Signed by: Craig W. McVean  
 Surveyor's Michigan License No.: 39088

Date: 12/10/2009

