

# LAND CORNER RECORDATION CERTIFICATE

Filing Requirement of Act 74, Mich. PA 1970

For Corners In: \_\_\_\_\_  
 Manistee \_\_\_\_\_  
 (County)

		Located In		Corner Code #
1. Public Land Survey	T	24N	R 13W	D9
	T		R	
2. Property Controlling in Section	S	T	R	
	S	T	R	
3. Miscellaneous Property in Section	S	T	R	
	S	T	R	

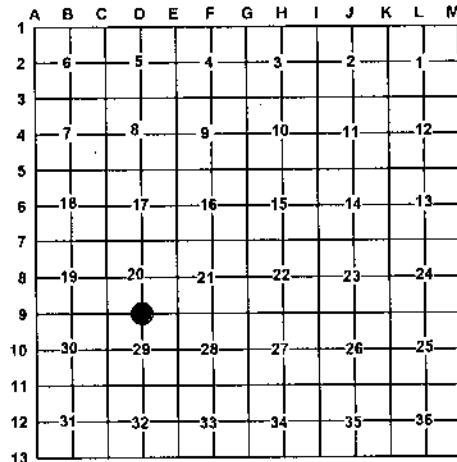
Register of Deeds Stamp & File Number

4. Lot No: \_\_\_\_\_ Recorded Plat: \_\_\_\_\_

5. Private Claims: \_\_\_\_\_

I, Craig W. McVean, in a field survey on Sept. 11, 2006 do hereby state that under requirements of PA 74, Michigan PA of 1970, the corner points mentioned in lines 1 and 2 above were in conformance with regulations and rules therefore as required in the current manual of survey instructions of the United States Department of the Interior, Bureau of Land Management or by a decree of a Court of Law and/or that the corner points mentioned in lines 3, 4 and 5 above were in conformance with the rules of the Michigan Board of Land Surveyors or by a Decree of a Court of Law; established, re-established, monumented, recovered, found as expressed below:

**NOTE: Not more than 2 corners, all in the same town and range, may be recorded on this certificate.**



**A. Description of original monument and accessories and/or subsequent restoration:**

- D9 – GLO – Set Post – J. Brink – 1839
  - 1) S28°W 40 links (26.40') 18" Cedar
  - 2) N50°E 29 links (19.14') 12" Tamarack
- CSR – Bk 'A', p. 262 – W. H. Cook – 1889 – Established
  - 3) Sugar 12" N34°W 6 3/4' L.
  - 4) Sugar 15" S45°E 12' L.
- Consumer Power Co. – Drawing #S-F 16874 – 1968 – P. McPherson
  - 'T' iron set w/ C. P. Co. Cap Distance East is 2648.82'
- Rec. Survey – L. 1, p. 163 – G. F. DeLaMater – 1974 – Shows distance of 2648.82' to 'E9'
- LCRC #76-06 and field notes – G. F. DeLaMater (#13030) in 1976, set a 3/4" pipe – 10' East of N-S Fence
  - 5) West 24.05' 6" Maple
  - 6) N65°E 30.28' 12" Maple
  - 7) East 3.92' 12" Twin Cherry
- Rec. Survey – L. 1, p. 331 – G. F. DeLaMater – 1976 – Shows distance of 2657.88' to 'C9'
- Rec. Survey – L. 1, p. 314 – G. F. DeLaMater – 1976 – Shows distance of 2640.74' to 'E9'.
- LCRC #04-057 – A. M. Slawinski – 2004 – found a 3/4" pipe (36" long with an old cap (unreadable). There are remains of an old fence running east and south from this corner position. This corner is ±55' east of a north and south 2-track. There are 2 existing steel fence posts beside this corner position. The crew measured 2656.32' from C-09 to D-09 & 2635.38' from D-09 to E-09. The crew could find no other evidence to dispute this location for the corner. Placed a standard Manistee Co. Monument in the exact location of the above mentioned 3/4" pipe as the best available evidence of the position of the original corner, and witnessed by:
  - 5) West 24.08' 8" Maple – nail flush and set 40d spike on S. side of tree
  - 6) N65°E 30.33' 18" Maple – nail flush and set 40d spike on N. side of tree
  - 7) S65°E 3.74' 15" Twin Cherry – nail on North side of tree
  - 8) N14°E 13.25' 18" Maple – double headed nail on N. side of tree
  - 9) N70°W 30.72' 10" Maple – double headed nail on S. side of tree
  - 10) S62°W 15.14' 6" Maple – double headed nail on W. side of tree

**B. Description of corner evidence found and/or method applied in restoring or re-establishing corner:**

- D9 – 1/4 Corner common to Sec. 20 & 29 – A study of the Co. Survey Record per Cook in 1889 would indicate that he established this corner by proportion between 'C9' and 'E9'. (Both 'C9' and 'E9' were established by measurements N, S, E & W per Cook). No GLO or CSR BT's found. No Consumers 'T' iron found. We find an ancient N-S fence in old tree row to North at the single proportion position for 'D9'. Dug in this area searching for stake point but sandy and dry and nothing found except N-S barb wire up to 6" deep in soil. Thus set 4" DNR Alum. Cap on 1" x 36" galv. iron pipe by single proportion to GLO between 'C9' and 'E9'. Falls in remains of N-S fence. Grid distance E & W is 2648.31'. This agrees with Consumers and DeLaMater's 1972 distance to 'E9'. 2-track NE-SW is 44± NW. DNR Mon. accepted as a careful and faithful re-establishment of the position of the original corner.
- Reference Pt. - N76°05'E 7.95' of 'D9' found Manistee Co. Mon. per LCRC #04-057 that replaced DeLaMater's pipe per 1976 records. It appears this pipe was set in error and in conflict with his 1974 survey, but subsequently used by DeLaMater and others without regard to the historical occupation and CSR. Could find no evidence that a fence corner S & E ever occupied this location. Manistee Co. Mon. not utilized as 'D9' in this survey.

**C. Description of monument for corner and accessories established to perpetuate locating the position of the corner:**

- D9 – 4" DNR Alum. Cap on 1" x 36" long galv. iron pipe w/ ring of stone. Set Blue Carsonite Post w/ loc. tag 1' SW
  - 7) N81°E 11.46' to set N & T in N. side Tw. 16" Cherry
  - 10) S37°W 8.01' to set N & T in NW side 5" S. Maple
  - 9) N79°W 23.41' to set N & T in S side 10' S. Maple
  - 8) N35°E 17.14' to set N & T in W. side 20" S. Maple
  - 5) N89°W 16.25' to fd. nail in S. side 8" S. Maple
  - 6) N61°E 37.70' to fd. nail in N. side 17" S. Maple
  - N76°05'E 7.95' to Reference Pt. – Manistee Co. Mon.

Signed by: Craig W. McVean  
 Surveyor's Michigan License No.: 39088

Date: 1/25/2007

