

MAY 18 1997

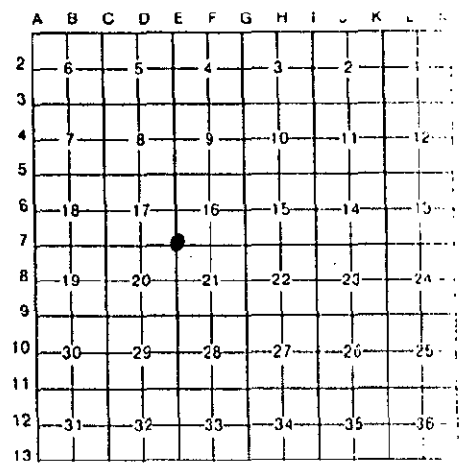
LAND CORNER RECORDATION CERTIFICATE
Filing Requirement of Act 74, Mich. P.A. 1970

Form for recording corners in Manistee County, including fields for Public Land Survey, Property Controlling in Section, Miscellaneous Property in Sec., Lot No., and Recorded Plat.

REGISTER'S OFFICE
MANISTEE COUNTY
96-470 at 3:45pm
OCT 16 1996
Deborah Six
REGISTER OF DEEDS

Register of Deeds Stamp & File Number

Bruce J. Jenema, in a field survey on September 5, 1996, do hereby certify that under requirements of P.A. 74, Michigan P.A. of 1970, the corner points mentioned in lines 1 and 2 above were in conformance with regulations and rules therefore as required in the current manual of survey instructions of the United States Department of the Interior, Bureau of Land Management or by a decree of a Court of Law and/or that the corner points mentioned in lines 3, 4 and 5 above were in conformance with the rules of the Michigan Board of Land Surveyors or by a Decree of a Court of Law; established, re-established, monumented, re-monumented, recovered, found as expressed below:



NOTE: Not more than 4 corners, all in the same town and range, may be recorded on this certificate.

A. Description of original monument and accessories and/or subsequent restoration:

E-07 SE corner of Section 17, T24N, R14W
John Brink 1839 Deputy Surveyor
(1) 10" Sugar S20°W 12 links (2) 20" Sugar N50°W 33 links(now extinct)
Dec. 1898, May 1899 J.H. Millard Book A page 52
stake and BT standing
(3) 12" S. Maple S31°W 28 1/2 links (4) 22" Maple stump East 2 1/2 links
Book A page 273 (now extinct)
11-15-1961 DNR land corner record Set 1" pipe & cap
Established from best available evidence
(5) 16" Tw. Elm N33°E 83.0' (6) 5" Elm S54 1/2°E 51.0'
(7) 8" Cherry S51°W 69.6'
July 1972 A.M. Slawinski Found 1" Iron pipe & cap Found witnesses (5), (6) & (7)
added (8) concrete monument North 32.88'
3/76 Gourdie Fraser & Associates Found 1/2" Iron bar
(9) 2" Tw. Cherry N15°W 78.01' (10) 8" R. Pine N20°E 55.23'
(11) 5" W. Pine S35°E 45.23'

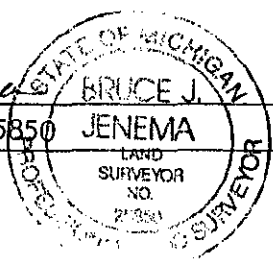
B. Description of corner evidence found and/or method applied in restoring or reestablishing corner:

On August 16, 1996, I found bent railroad spike, reset from witnesses (7), (9), (10) & (11) found in good condition.

C. Description of monument for corner and accessories established to perpetuate locating the position of the corner:

On August 16, 1996, I installed a Manistee County Monument in the exact location as determined from above witnesses 7,9,10,11 as a careful & faithful re-establishment of the position of the original corner and witnessed by:
Set W. Pine S22°E 45.05'
Set 24" Tw. Cherry N08°W 77.85'
Fnd. (10) 10" W. Pine N20°E 55.23'
Fnd. (7) 12" Cherry S51°W 69.6'
(8) Destroyed (Gone)
Corner E-07 ratified by the Manistee County Peer Group according to the county plan adopted pursuant to P.A. 345 of 1990, as amended, (being the State Survey and Re-monument Act, MCL 54.261 et seq.). Date of Peer Review: SEP 17 1996

Signed by Bruce J. Jenema
Surveyor's Michigan License No. 25850



Date Sept. 9, 1996