

# LAND CORNER RECORDATION CERTIFICATE

Filing Requirement of Act 74, Mich. PA 1970

**PAGE 2 of 2**

For Corners In: <u>Manistee</u> (County)	Located In	Corner Code #
1. Public Land Survey	T <u>24N</u> R <u>14W</u>	<u>H13</u>
	T <u>23N</u> R <u>14W</u>	<u>H1</u>
2. Property Controlling in Section	S _____ T _____ R _____	_____
	S _____ T _____ R _____	_____
3. Miscellaneous Property in Section	S _____ T _____ R _____	_____
	S _____ T _____ R _____	_____

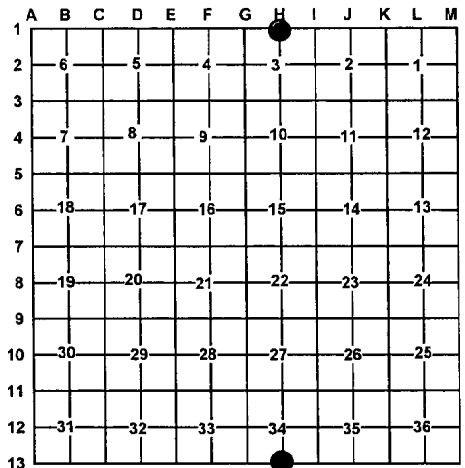
Register of Deeds Stamp & File Number

4. Lot No: \_\_\_\_\_ Recorded Plat: \_\_\_\_\_

5. Private Claims: \_\_\_\_\_

I, Craig W. McVean, in a field survey on May 20, 2008 do hereby state that under requirements of PA 74, Michigan PA of 1970, the corner points mentioned in lines 1 and 2 above were in conformance with regulations and rules therefore as required in the current manual of survey instructions of the United States Department of the Interior, Bureau of Land Management or by a decree of a Court of Law and/or that the corner points mentioned in lines 3, 4 and 5 above were in conformance with the rules of the Michigan Board of Land Surveyors or by a Decree of a Court of Law; established, re-established, monumented, recovered, found as expressed below:

**NOTE: Not more than 2 corners, all in the same town and range, may be recorded on this certificate.**



A. See Page 1 of 2

B. Description of corner evidence found and/or method applied in restoring or re-establishing corner:

H13-H1 – Standard ¼ Corner common to Sec. 34, T24N, R4W & Sec. 3, T23N, R14W – Set Manistee Co. Monument from the found remains of witnesses #3 and 4 that fits position in N-S fence remains. Measured West 135'±5 (132' – GLO) to edge of swamp/bottom of bank course – NW. No GLO evidence found. E. W. Muenscher notes in 1914 that this position was reestablished by testimony. Since only the standard ¼ corner was established the land owner must have been referencing the standard ¼ corner. Measured West 2658.88' (2640' – GLO) to 'G13' and West 2688.58' (2687.52' – EWM) to 'G1'. Measured East 2622.65' (2640' – GLO) to 'I-13' and East 2602.84' (2606.34' – EWM) to 'I-1'. Thus based on occupation and measurements it is apparent that the Standard ¼ Corner was used as common to Sec. 3 for the 1914 petition survey in Sec. 3. Theoretically since there are double corners ½ mile east and west of here there should have been double ¼ corners. By BLM procedure corner 'H1' should have been established 47.87' West of 'H13' midway between the closing section corners on the standard line. Since Sec. 3 has been subdivided by petition in 1914 using the ¼ corner as common I believe accepting the ¼ corner as common to Sections 34 & 3 is the only logical solution that will not add confusion to the historical petition survey in Section 3. Manistee Co. Mon. accepted as the best available evidence of the position of the original corner.

- Reference Pt. 'C' – Fd. Manistee Co. Mon. per LCRC #01-167' is N60°45'W 60.53' from 'H13 – H1' – MCM not utilized as 'H1' in this survey. P. G. Bentley, PS #47944 replaced with ½" Capped Iron Rebar #13597
- Reference Pt. 'D' – Fd. Manistee Co. Mon. per LCRC #01-447 is N44°19'W 40.27' from 'H13-H1'. MCM not utilized as 'H13' in this survey. P. G. Bentley, PS #47944 replaced with ½" Capped Iron Rebar #13597.

C. Description of monument for corner and accessories established to perpetuate locating the position of the corner:

H13-H1 – Manistee Co. Monument being a stamped 3 ¼" Brass Cap on 2" x 30" galv. iron pipe. Set Blue Carsonite Post 1' SE.  
 S36°E 55.07' to set N & T in NE side 7" Cedar scribed 'XBT'  
 S45°W 21.94' to set N & T in NW side 4" R. Maple  
 N40°W 32.05' to set N & T in NE side 12" Cedar scribed 'XBT'  
 N9°E 20.88' to set N & T in E. side 8" R. Maple  
 N60°45'W 60.53' to Reference Pt. 'C' – ½" CIR #13597  
 N44°19'W 40.27' to Reference Pt. 'D' – ½" CIR #13597



Signed by: Craig W. McVean  
 Surveyor's Michigan License No.: 39088

Date: 12/10/2009