

LAND CORNER RECORDATION CERTIFICATE

Filing Requirement of Act 74, Mich. PA 1970

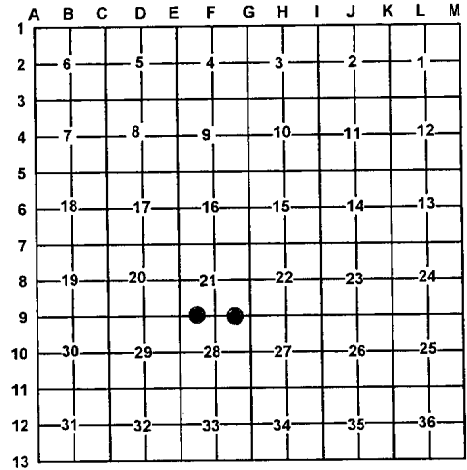
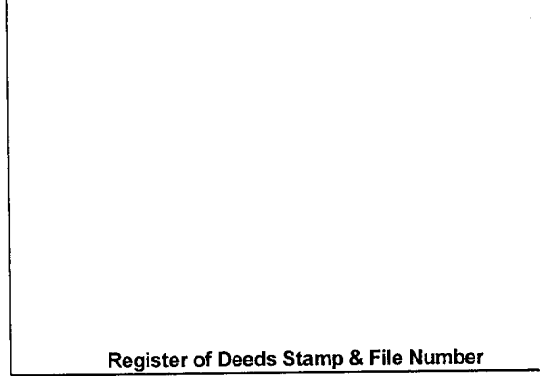
For Corners In: _____ Located In _____ Corner Code # _____
 Manistee _____
 (County)

| | | | | | |
|--------------------------------------|---------|---------|---------|--|----|
| 1. Public Land Survey | | T _____ | R _____ | | |
| | | T _____ | R _____ | | |
| 2. Property Controlling in Section | S 21 | T 24N | R 14W | | 15 |
| | S 21 | T 24N | R 14W | | 16 |
| 3. Miscellaneous Property in Section | S _____ | T _____ | R _____ | | |
| | S _____ | T _____ | R _____ | | |

4. Lot No: _____ Recorded Plat: _____
 5. Private Claims: _____

I, Craig W. McVean, in a field survey on April 8, 2008 do hereby state that under requirements of PA 74, Michigan PA of 1970, the corner points mentioned in lines 1 and 2 above were in conformance with regulations and rules therefore as required in the current manual of survey instructions of the United States Department of the Interior, Bureau of Land Management or by a decree of a Court of Law and/or that the corner points mentioned in lines 3, 4 and 5 above were in conformance with the rules of the Michigan Board of Land Surveyors or by a Decree of a Court of Law; established, re-established, monumented, recovered, found as expressed below:

NOTE: Not more than 2 corners, all in the same town and range, may be recorded on this certificate.



A. Description of original monument and accessories and/or subsequent restoration:

- | | |
|--|---|
| <p><u>15</u> – 1901 – CSR, Book 'B' p. 53, J. H. Millard 1) Sugar 10 N63°W 14 1/2 2) Hemlock 20 S25°E 11 - 1961 – Michigan Dept. of Conservation Land Corner Record, K. J. Ostling. Fd. 1" pipe in center of E-W road in-line with old fence north. Checks Muenscher's record measurement to E 1/8 corner between 21-28 although new bearing trees all gone. 3) 20" B. Cherry N12°E 82.4' 4) 24" B. Cherry N73°E 116.1'</p> | <p><u>16</u> – 1898 – C. P. Tuller – Set corner 1) Sugar 11" S57°00'E 14' 2) Sugar 13" S51°00'W 3' - 1907 – CSR, Book 'A', p. 279 E. W. Muensher - Distance East to 'G9' is 19.83 chains - 1961 – Michigan. Dept. of Conservation, K. J. Ostling. Found a 1" pipe in center E & W road, precisely in-line with fences north and south. Probably a perpetuation of the corner established by E. W. Muenscher. This point checks Muenscher's record measurement to W 1/8 corner between 21-28 3) 7" H. Maple S35°E 30.6'</p> |
|--|---|

B. Description of corner evidence found and/or method applied in restoring or re-establishing corner:

- | | |
|---|--|
| <p><u>15</u> – W 1/16 corner common to Sections 21 & 28 - Fd. 1" O.D. rusted iron pipe, down 0.4' - 5± north of E-W centerline. Found stumps of witness # 3 & # 4. 1" Pipe accepted as best available evidence of the position of the corner.</p> | <p><u>16</u> – E 1/16 corner common to Sections 21 & 28 - Found 1 1/2" Inside Diameter pipe. 3' North of centerline East-West gravel Rd. Tuller BT's are gone. Ostling BT is gone. Accepted found pipe as best available evidence of the position of the corner.</p> |
|---|--|

C. Description of monument for corner and accessories established to perpetuate locating the position of the corner:

- | | |
|--|--|
| <p><u>15</u> – Replaced 1" x 30" rusted pipe with 4" x 36" round concrete monument with 1/2" iron - down 0.6' N37°E 50.39' to set nail & tag on NW side 16" Red Pine S60°E 63.58' to set nail & tag on SW side 2" Red Pine S12°E 101.54' to set nail & tag on E side 6" Cherry N44°W 50.83' to set nail & tag on SW side 10" Red Pine Set Blue Carsonite Post with location tag N15°W 33'</p> | <p><u>16</u> – Drove 5/8" x 12" rebar with stamped 2" Aluminum cap inside found 1 1/2" I.D. iron pipe - Down 0.6' North 33.00 to set 2" Aluminum cap on 5/8" x 34" rebar on-line and Blue Carsonite Post with location tag N32°W 64.06' to set nail and tag in SW side 13" Red Pine N41°E 68.53' to set nail & tag in SE side 12" Red Pine S17°E 55.05' to set nail & tag in E side 7" Sugar Maple</p> |
|--|--|

Signed by: Craig W. McVean
 Surveyor's Michigan License No.: 39088

Date: 6/28/2010

