

DEC 18 1995

COMMISSION

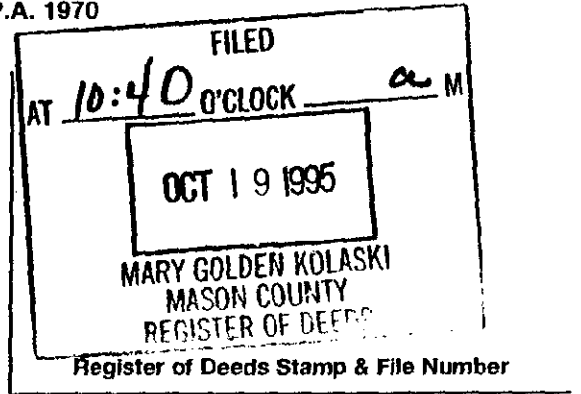
LAND CORNER RECORDATION CERTIFICATE
Filing Requirement of Act 74, Mich. P.A. 1970

For corners in Mason (County)

Located In:

Corner Code #

- 1. Public Land Survey T 19N R 18W I-11
2. Property Controlling in Section S T R
3. Miscellaneous Property in Section S T R



- 4. Lot No. , Recorded Plat
5. Private Claims

I, Richard Hays, in a field survey on September, 19 95, do hereby certify that under requirements of P.A. 74, Michigan P.A. of 1970, the corner points mentioned in lines 1 and 2 above were in conformance with regulations and rules therefore as required in the current manual of survey instructions of the United States Department of the Interior, Bureau of Land Management or by a decree of a Court of Law and/or that the corner points mentioned in lines 3, 4 and 5 above were in conformance with the rules of the Michigan Board of Professional Surveyors or by a Decree of a Court of Law; established, re-established, monumented, re-monumented, recovered, found as expressed below:

NOTE: Not more than 4 corners, all in the same town and range, may be recorded on this certificate.

A. Description of original monument and accessories and/or subsequent restoration:

I-11 SECTION CORNER FOR SECTIONS 26, 27, 34 and 35, T19N, R18W

- G.L.O. 1838 Sibley 1963 M.C.R.C. Mon. Box 1985 Act 132, L. 330, Pg. 134
1) 18" W. Oak S-45-E 15 3) P.Pole S-45-E 56.5' Fluharty #18223
2) 10" Birch N-33-W 21 4) P. Pole S-45-W 54.8' 5) 6" Cherry N-50-W 85.15'
1 Mitchell Survey 1973 Act 74, L.1, Pg. 200 6) P.Pole N-31-E 65.49'
Ross #17634 7) P.Pole S-32-E 56.36'
Found Iron in Mon. Box 8) P.Pole S-36-W 54.80'

B. Description of corner evidence found and/or method applied in restoring or reestablishing corner:

I-11 SECTION CORNER FOR SE TIONS 26, 27, 34 and 35, T19N, R18W

On Sept 21, 1995 found Iron in Mon. Box no other evidence found to dispute this location.

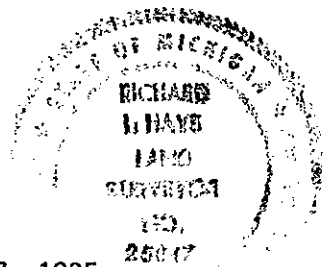
Condition of Recorded Witnesses is: #1 Gone, #2 Gone, #3 Found, #4 Found, #5 Gone, #6 Gone, #7 Found, #8 Found.

C. Description of monument for corner and accessories established to perpetuate locating the position of the corner:

I-11 SECTION CORNER FOR SECTIONS 26, 27, 34 and 35, T19N, R18W

Replaced Iron with a 5/8' Re-Rod 24' long with an aluminum cap stamped Mason County Monument in Mon Box and is accepted as a careful and faithful reestablishment of the position of the original corner.

- 6" Red Pine N-47-E 43.90 #3, #7 P.Pole S-35-E 56.36'
4x6" Wood Fence corner post #4, #8 P.Pole S-37-W 54.80'
N-76-W 154.15



Signed by Richard Hays

Date October 17, 1995

Surveyor's Michigan License No. 25847

Peer Group Reviewed and Approved

Date: 10-17-95 Kenneth I. Ross, Mason County Surveyor

FORM APPROVED BY MICHIGAN STATE BOARD OF PROFESSIONAL SURVEYORS, JAN. 28, 1971 REVISED MAY 14, 1975 REVISED JAN, 1983