

# SURVEY & REMONUMENTATION

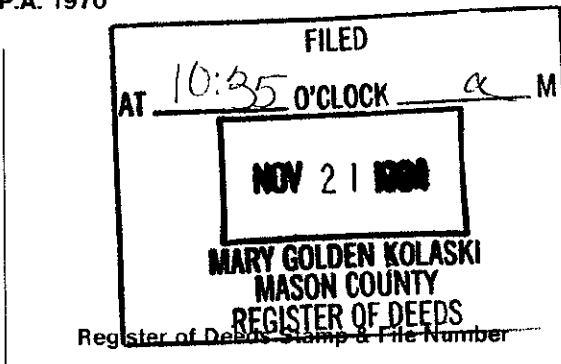
APR 28 1995

COMMISSION

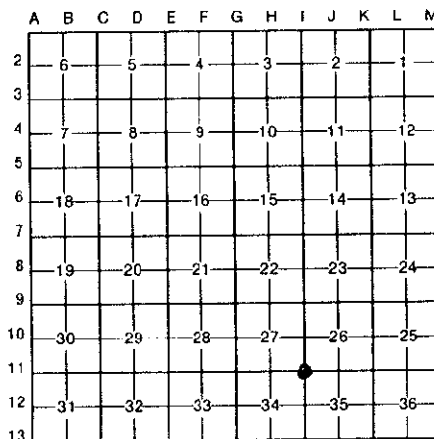
## LAND CORNER RECORDATION CERTIFICATE Filing Requirement of Act 74, Mich. P.A. 1970

For corners in

<u>MASON</u> <small>(County)</small>	Located In:	Corner Code <u>##</u>	
1. Public Land Survey	T <u>19N</u> R <u>15W</u>	I-11	
	T _____ R _____		
	T _____ R _____		
	T _____ R _____		
2. Property Controlling in Section	S _____ T _____ R _____	<i>Seg. 1</i>	
	S _____ T _____ R _____		
	S _____ T _____ R _____		
3. Miscellaneous Property in Sec.	S _____ T _____ R _____		
4. Lot No. _____, Recorded Plat _____			
5. Private Claims _____			



I, John Schulke, in a field survey on Nov. 5th, 19 94, do hereby certify that under requirements of P.A. 74, Michigan P.A. of 1970, the corner points mentioned in lines 1 and 2 above were in conformance with regulations and rules therefore as required in the current manual of survey instructions of the United States Department of the Interior, Bureau of Land Management or by a decree of a Court of Law and/or that the corner points mentioned in lines 3, 4 and 5 above were in conformance with the rules of the Michigan Board of Land Surveyors or by a Decree of a Court of Law; established, re-established, monumented, re-monumented, recovered, found as expressed below:



**NOTE: Not more than 4 corners, all in the same town and range, may be recorded on this certificate.**

**A. Description of original monument and accessories and/or subsequent restoration:**

Original survey established in 1838 by Sibley.  
Set a wooden post with the following references:  
1. Beech 12" S15°W 26 lks.  
2. Maple 12" N32°E 22 lks.

In 1971, Ross shows an 1" iron pipe at the corner.  
6. Tel. pole S15°W 84.60 ft.  
7. Power pole S25°E 94.20 ft.

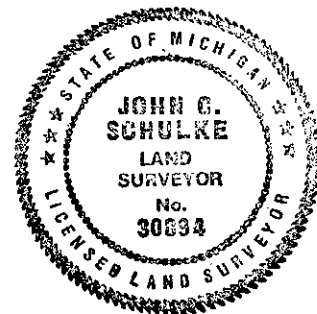
In 1896, J.W. Griswold (see Book 1, Page 309) found corner set by Eastman, no references.  
3. North 1/4 corner of Section 34 West 2633.4 ft.  
4. East 1/4 corner of Section 34 South 2566.7 ft.

In 1984, D. Dunlap indicated he found iron (see corner certificate Liber 2, page 224).

In 1938, Survey by Lunde found 1 1/4" iron pipe and also a stone, said post being 32 ft. East and 33.4 ft. North of a corner steel fence post.  
5. East 1/4 corner of Section 34 established S18°E 2566.0 ft.

**B. Description of corner evidence found and/or method applied in restoring or reestablishing corner:**

Recovered 1 1/4" iron pipe, stone on North side and on center line of Taylor and Sugar Grove Roads. Also found 1" iron pipe N34°21'E a distance of 3.62 ft.  
References #1, 2, 5, 6 and 7 not recovered  
North 1/4 corner of Section 34 N87°10'26"W (Grid bearing) 2633.83 ft.  
East 1/4 corner of Section 34 S0°53'00"W 2565.22 ft. (Grid-Bearing & Distances)  
Southeast corner of Section 34 S0°53'13"W 5131.20 ft.



**C. Description of monument for corner and accessories established to perpetuate locating the position of the corner:**

Set 5/8" X2' rered inside the 1 1/4" iron pipe with an aluminum cap monument stamped to identify the corner. The monument 10 inches below the surface of the road. The following corner references:  
Power pole N14°W 96.31 ft.  
Power pole N20°E 88.12 ft.  
Apple 6" S60°E 40.99 ft.  
Road sign S69°W 42.3 ft.  
6"X6" treated wood post N48°E 50.35 ft.  
6"X6" treated wood post N87°E 36.94 ft.

Peer Group Reviewed and Approved  
Date: Nov 7, 1994  
*Kenneth L. Ross*  
Mason County Surveyor

(NOTE: Corner is accepted as the best evidence of the perpetuated location of the original corner).

Signed by John C. Schulke Date Nov 7, 1994  
Surveyor's Michigan License No. PLS-30894