

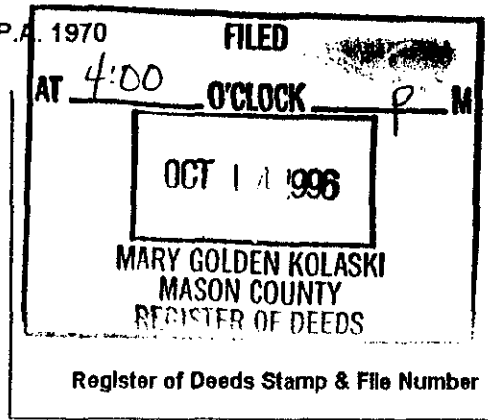
SURVEY & REMONUMENTATION

MAY 07 1997

COMMISSION

LAND CORNER RECORDATION CERTIFICATE

Filing Requirement of Act 74, Mich. P.A. 1970



For corners in	Located In:	Corner Code #
Mason County (County)		
1. Public Land Survey	T 20N R 16W	G-9
	T R	
	T R	
	T R	
2. Property Controlling in Section	S T R	
	S T R	
3. Miscellaneous Property in Sec.	S T R	
	S T R	

4. Lot No. _____, Recorded Plat _____
 5. Private Claims _____

	A	B	C	D	E	F	G	H	I	J	K	L	I
2	6	5	4	3	2	1							
3													
4	7	8	9	10	11	12							
5													
6	18	17	16	15	14	13							
7													
8	19	20	21	22	23	24							
9													
10	30	29	28	27	26	25							
11													
12	31	32	33	34	35	36							
13													

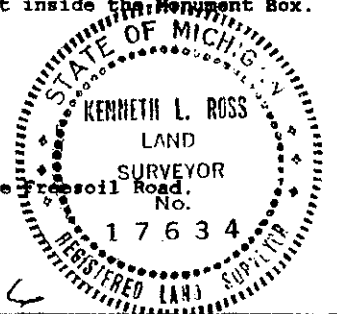
I, Kenneth L. Ross, in a field survey on August 1, 1996, do hereby certify that under requirements of P.A. 74, Michigan P.A. of 1970, the corner points mentioned in lines 1 and 2 above were in conformance with regulations and rules therefore as required in the current manual of survey instructions of the United States Department of the Interior, Bureau of Land Management or by a decree of a Court of Law and/or that the corner points mentioned in lines 3, 4 and 5 above were in conformance with the rules of the Michigan Board of Land Surveyors or by a Decree of a Court of Law; established, re-established, monumented, re-monumented, recovered, found as expressed below:

NOTE: Not more than 4 corners, all in the same town and range, may be recorded on this certificate.

A. Description of original monument and accessories and/or subsequent restoration:
 In 1839, John Brink, laid out the original corner, Stating "Set Section Post common to Sections 21, 22, 37 and 28". Witnesses Given: (1) 8" Beech, S69°E, 13 links, (2) 18" Hemlock, N50°E, 24 links. In May, 1881, C.E. Mitchell, and stated "found stone and proper Testimony", No Witnesses Given. Mason County Road Commission Records state "surface iron, set Monument Box, Witnesses Given: (3) P.P. NE, 43.36', (4) T.P. #2394, NW, 42.24', (5) P.P. SW, 33.61'. In 1985 Kenneth L. Ross, RLS, found iron in Monument Box, No Witnesses Given. In 1991 Kenneth L. Ross, RLS, found iron in Monument Box, No Witnesses Given. In 1993, Kenneth L. Ross, RLS, found iron in Monument Box, No Witnesses Given. Plats as recorded in Liber 1, of plats pages 25 and 28, Mason County Records, are tied to this corner. Note this is the SW Corner of the Village of Freesoil and fits well with the Plat as Recorded.

B. Description of corner evidence found and/or method applied in restoring or reestablishing corner:
 In August, 1996, I found a 1" square iron in Monument Box. I cross pinned the iron and pulled. Witnesses (1), (2), (4) have been destroyed. Witnesses (3) and (5) are standing and in good condition. Probed inside the Monument Box for the stone described above but did not find. I could find no other evidence to dispute the location of this corner.

C. Description of monument for corner and accessories established to perpetuate locating the position of the corner:
 I replaced the 1" square iron in the Exact location with a Standard Mason County Monument inside the Monument Box.
 Witnesses checked or Taken: (3) Spike in P.P. N45°E, 43.50'
 (5) Spike in P.P. S50°W, 33.61'
 Spike in P.P. N44°W, 44.30'
 NW Corner Block Garage, S38°E, 123.10'
 NE Corner Pole Barn, S40°W, 166.20"
 SW Corner of House # 2412 Freesoil Road, N67°E, 97.24'
 On Center-line of Custer Road and 3.9' South of Center-line Freesoil Road.



Signed by Kenneth L. Ross Date 9-30-96
 Surveyor's Michigan License No. 17634

Peer Group Reviewed and Approved
 Date: 9-30-96
Kenneth L. Ross
 Mason County Surveyor