

LAND CORNER RECORDATION CERTIFICATE
Filing Requirement of Act 74, Mich. P.A. 1970

For corners in
MECOSTA
(County)

Located In: _____ Corner Code \neq _____

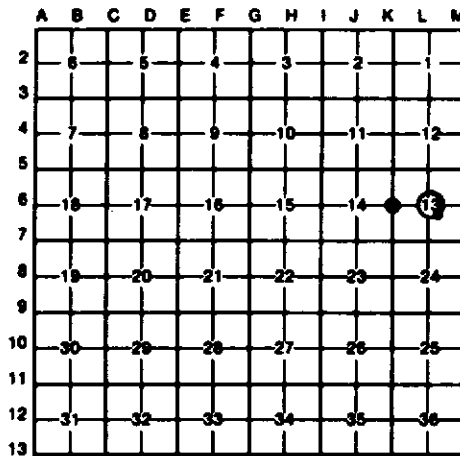
1. Public Land Survey	T	13	N	R	9	W	K-6
	T		R				L-6
	T		R				
	T		R				
2. Property Controlling in Section	S		T		R		
	S		T		R		
3. Miscellaneous Property in Sec.	S	13	T		R		ctr. NW
	S		T		R		1/4 SE 1/4.

Register of Deeds Stamp & File Number

4. Lot No. _____, Recorded Plat _____
 5. Private Claims _____

I, CARL F. ROSER, in a field survey on AUGUST 7TH, 19 85, do hereby certify that under requirements of P.A. 74, Michigan P.A. of 1970, the corner points mentioned in lines 1 and 2 above were in conformance with regulations and rules therefore as required in the current manual of survey instructions of the United States Department of the Interior, Bureau of Land Management or by a decree of a Court of Law and/or that the corner points mentioned in lines 3, 4 and 5 above were in conformance with the rules of the Michigan Board of Land Surveyors or by a Decree of a Court of Law, established, re-established, monumented, re-monumented, recovered, found as expressed below:

NOTE: Not more than 4 corners, all in the same town and range, may be recorded on this certificate.



A. Description of original monument and accessories and/or subsequent restoration:

K-6 L-6 L-6 CONT.

B. Description of corner evidence found and/or method applied in restoring or reestablishing corner:

<p>K-6 RECOVERED 1/2" RE-ROD FOR NW 1/4 COR. SEC. 13. COR. FALLS IN CTR. N-S GRAVEL RD. COR. IS IN LINE W/FIELD AND POSSIBLE FR. BEHN LOOKING N.</p>	<p>L-6 RECOVERED OLD PIPE FOR CTR. SEC. 13. COR. FITS CD. SURVEYOR L.N. JUNE 1907 SURVEY IN LIB. OF CO. SURVEYORS RECORDS, RECORDED AT REG. OF DEEDS. JUNE CALLED FOR "OLD COR. REPLACED". COR. IS IN E'LY WHEEL TRACK OF N-S TRAIL. COR. IS IN LINE W/OLD FN. REMAINS, LOOKING N. FR. OLD R/W FN. REMAINS 32'±2' E. AND OLD R/W FN REMAINS ON GROUND</p>	<p>L-6 CONT. BL'Y 32'±2' N.</p>	<p>§ ESTABLISH NW COR., SE 1/4, NW 1/4, SE 1/4, SEC. 13; PER STANDARD S.L.N. INSTRUCTIONS.</p>
---	--	--	---

C. Description of monument for corner and accessories established to perpetuate locating the position of the corner:

<p>K-6 FB. 1/2" RE-ROD. 4" APPLE (CLUMP OF 3) 8" APPLE COR. FN. POST, CED. DUE E SET CED. POST W/ LOC TAG DUE N</p>	<p>L-6 FB. 1 1/4" PIPE AND STONE. 16" MAPLE IN CLUMP S 15" W 5" W. OAK 46" MAPLE SET CED. POST N/LOC. TAG CTR. N-S TRAIL DUE N</p>	<p>L-6 CONT. 42.03' 84.70' 27.40' 33'</p>	<p>L-6 CONT. 63.57' 23.92' 41.20' 16.5' 3'</p>	<p>§ DROVE 5/8" X 3/4" RE-ROD N/RLS CAP; SET CED. POST. 6" W. PINE 8" W. OAK 8" W. OAK W EDGE OF WOODS DUE E</p>	<p>118.68' 125.07' 84.36' 94'±4'</p>
--	--	---	---	--	---

Signed by Carl F. Roser 3-29-89

Date _____

Surveyor's Michigan License No. 12028

