

OCT 25 1999

MECOSTA COUNTY REMONUMENTATION PROGRAM

CORNER APPROVED BY PEER GROUP ON June 11, 1999

STATE OF MICHIGAN COUNTY OF MECOSTA RECEIVED FOR RECORD

SECTION

LAND CORNER RECORDATION CERTIFICATE

Filing Requirement of Act 74, Mich. P.A. 1970

'99 JUL -2 P3:00

For corners in

Mecosta (County)

Located in: Aetna Township

Corner Code #

Table with 4 columns: Item, Section, Township/Range/Section, Corner Code. Includes items like Public Land Survey, Property Controlling, etc.

Joann Brown REGISTER OF DEEDS

Register of Deeds Stamp & File Number

4. Lot No. Recorded Plat
5. Private Claims

I, James J. Keller, in a field survey on June 3, 1999, do hereby certify that under requirements of P.A. 74, Michigan P.A. of 1970, the corner points mentioned in lines 1 and 2 above were in conformance with regulations and rules therefore as required in the current manual of survey instructions of the United States Department of the Interior, Bureau of Land Management or by a decree of a Court of Law and/or that the corner points mentioned in lines 3, 4 and 5 above were in conformance with the rules of the Michigan Board of Land Surveyors or by a Decree of a Court of Law; established, re-established, monumented, re-monumented, recovered, found as expressed below.

NOTE: Not more than 2 corners, all in the same town and range, may be recorded on this certificate.

A. Description of original monument and accessories and/or subsequent restoration:

June 29, 1837, John Hodgson, Deputy Surveyor GLO "Quarter Section Post in River" Over River, Set Meander Post on Right Bank of Muskegon River. 10" Elm N69°W 12 Links (7.92') 10" Elm S52°W 41 Links (27.06') "Intersected Left Bank Muskegon River. Set Meander Post" 36.41 ch (2403.06') (W of NE Corner, Sec 6 40.50'-36.41' = 4.09 ch (269.94' West of N 1/4 Corner) 10" Hemlock N27°E 70 Links (46.20') 8" Cedar S60°E 24 Links (15.94')

Grid table with columns A-M and rows 1-13. Contains numbers 1-36 in a grid pattern.

APPROVED BY MECOSTA CO. PEER GROUP IN ACCORDANCE WITH P.A. 345 of 1990

James J. Knapp CHAIRMAN DATE June 11, 1999

December 1, 1926, Consumers Power Company Dwg #164 (F1343 Sh14) Shows Corner in River

June 22, 1938, M.D. Stitt, Consumers Power Company Dwg #HS-4598-G, Muskegon River File "Under Water"

B. Description of corner evidence found and/or method applied in restoring or reestablishing corner:

April 27, 1999, James J. Keller, RLS #10693, Set Witness Corners E, W, & South of Corner (See Sketch on LCRC for B-13, Sec 31, T14N, R10W)

C. Description of monument for corner and accessories established to perpetuate locating the position of the corner:

Set Remonumentation Monument as the East Witness Corner on East Bank of the Muskegon River on line with the NE Corner and the N 1/4 Corner location in the Muskegon River.

Witness Corner is West of NE Corner Section 6-13-10 2167.77' Set 60d and Tag NE sd 8" Maple N47°W 31.52' Set 60d and Tag 34" Oak N15°E 45.60' Set 60d and Tag S sd Maple S85°E 21.25' Set 60d and Tag NW sd 4" Oak S40°W 26.04'

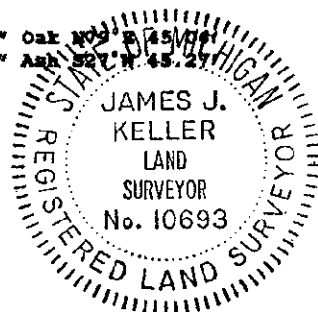
Set Remonumentation Monument on the West Bank of the Muskegon River as the West Witness Corner on line with the NW Corner and the N 1/4 Corner location in the Muskegon River.

Witness Corner is East of NW Corner Section 6-13-10 1742.05' Set 60d and Tag SE sd 12" Red Pine N52°E 8.62' Set 60d and Tag W sd 12" Red Pine S18°W 14.51' Set 60d and Tag NW sd Red Pine S30°W 24.00' Cut + Top 3' Boulder N02°E 22.55'

Set Remonumentation Monument as the South Witness Corner on the South Bank of the Muskegon River on line with the Center and the N 1/4 Corner location in the Muskegon River.

Witness Corner is North of Center Section 6-13-10 544.34' Set 60d and Tag SE sd 8" Oak N35°E 25.72' Set 60d and Tag S sd 10" Oak N09°E 45.00' Set 60d and Tag SW sd 12" Oak S58°E 41.94' Set 60d and Tag NW sd 4" Ash S27°W 45.20'

Continued on reverse side



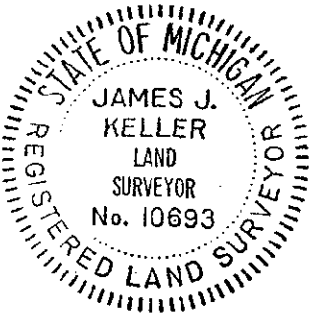
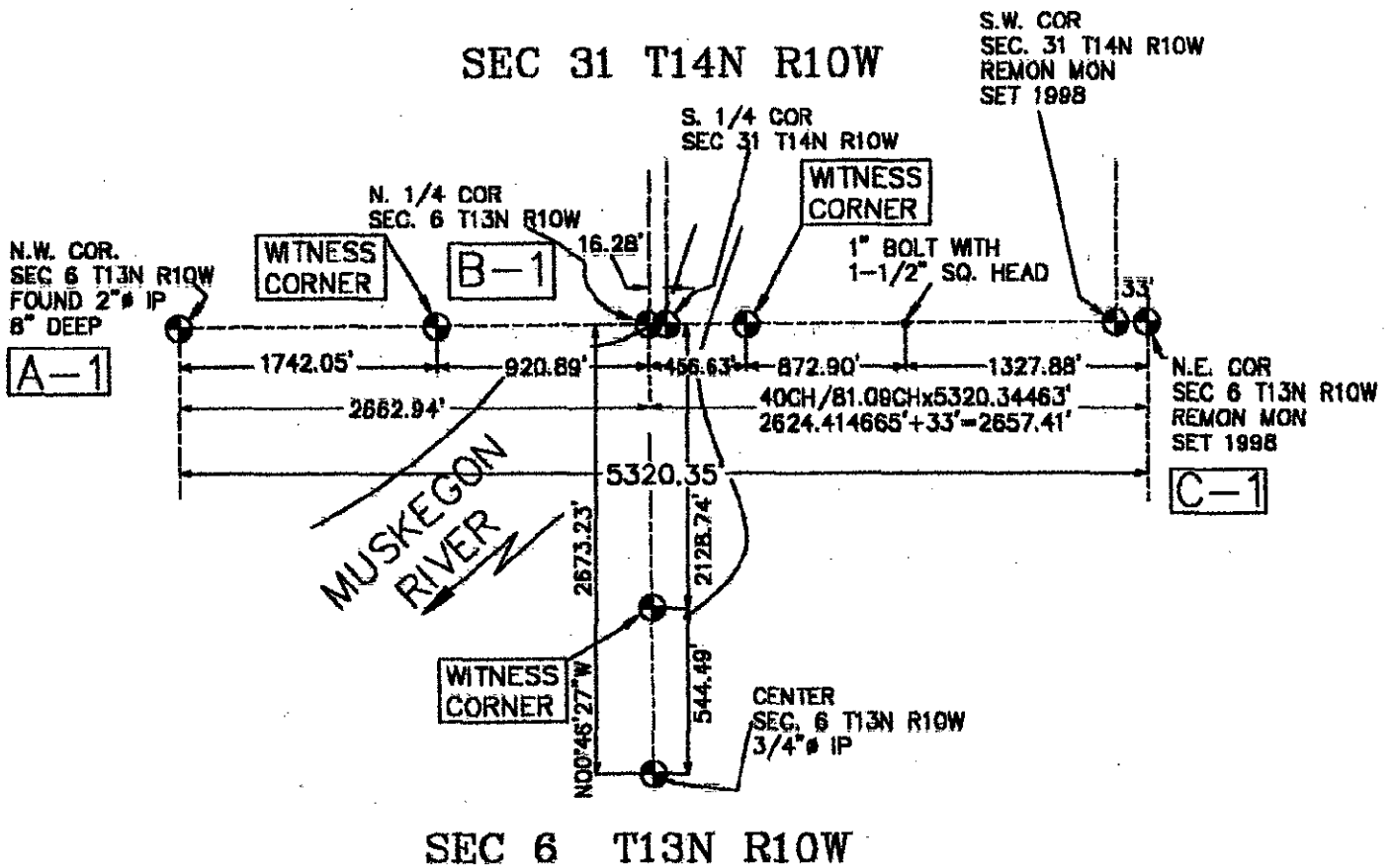
Signed by James J. Keller Surveyor's Michigan License No. 10693

Date June 14, 1999

SURVEY &
REMONUMENTATION

OCT 23 1999

SECTION



Signed by James J. Keller
 Surveyor's Michigan License No. 10693

Date June 14, 1999

FORM APPROVED BY MICHIGAN STATE BOARD OF LAND SURVEYORS, JAN. 28, 1971
 REVISED MAY 14, 1975
 REVISED JAN. 1983
 ADAPTED FOR WORD PROCESSING MARCH, 1983