

SURVEY & REMONUMENTATION MECOSTA COUNTY REMONUMENTATION PROGRAM

OCT 26 1999

CORNER APPROVED BY PEER GROUP ON June 11, 1999

LAND CORNER RECORDATION CERTIFICATE

STATE OF MICHIGAN
COUNTY OF MECOSTA
RECEIVED FOR RECORD

Filing Requirement of Act 74, Mich. P.A. 1970

SECTION

For corners in Mecosta (County)	Located In: Mecosta Twp.	Corner Code #
1. Public Land Survey	SEC 31 T 14N R 10W	B-13
	T R	
	T R	
	T R	
2. Property Controlling in Section	S T R	
	S T R	
3. Miscellaneous Property in Sec.	S T R	
	S T R	
4. Lot No. _____, Recorded Plat _____		
5. Private Claims _____		

'99 JUL -2 P 3:00

Joann Brown
REGISTER OF DEEDS

Register of Deeds Stamp & File Number

I, James J. Keller, in a field survey on June 9 19 99, do hereby certify that under requirements of P.A. 74, Michigan P.A. of 1970, the corner points mentioned in lines 1 and 2 above were in conformance with regulations and rules therefore as required in the current manual of survey instructions of the United States Department of the Interior, Bureau of Land Management or by a decree of a Court of Law and/or that the corner points mentioned in lines 3, 4 and 5 above were in conformance with the rules of the Michigan Board of Land Surveyors or by a Decree of a Court of Law, established, re-established, monumented, re-monumented, recovered, found as expressed below:

NOTE: Not more than 2 corners, all in the same town and range, may be recorded on this certificate.

A. Description of original monument and accessories and/or subsequent restoration:

June 29, 1837, John Hodgson, Deputy Surveyor GLO
 At 36.41 ch (2403.06') "Intersected Left Bank Muskegon River, Set Meander Post"
 10" Hemlock N27°E 70 Links (46.20')
 8" Cedar S60°E 24 Links (15.84')
 At 40.00 ch (2640.0') "Quarter Section Post in River"
 At 40.50 ch (2673.0') "Over River Set Meander Post on Right Bank of Muskegon River"
 10" Elm N69°W 12 Links (7.92')
 10" Elm S52°W 41 Links (27.06')
 At 81.09 ch (5351.94') Township Corner

December 1, 1926, Consumers Power Company Drawing 164 (F1343, Sh 14). Shows Corner in River

June 22, 1939, Consumers Power Company Dwg #HS-4598-G. "Under Water"

B. Description of corner evidence found and/or method applied in restoring or reestablishing corner:

June 3, 1999, James J. Keller, RLS #10693. Set Witness Corners E-W & S of Corner (See Sketch on Back)
 Located Corner by proportionate measure using SE Corner and on line with bolt 1329' Westerly thereof shown on CPCO DWG (1939)

C. Description of monument for corner and accessories established to perpetuate locating the position of the corner:

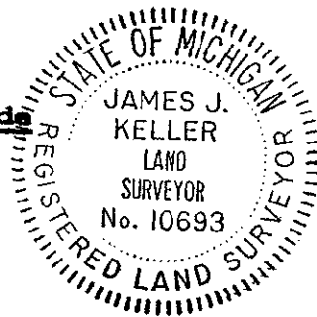
Set Remonumentation Monument as East Witness Corner on East Bank of the Muskegon River on Line with the NE Corner and the N 1/4 Corner location in the Muskegon River.
 Witness Corner is West of NE Corner Section 6-13-10 2167.77'
 Set 60d and Tag NE sd 8" Maple N47°W 31.52'
 Set 60d and Tag 34" Oak N15°E 45.60'
 Set 60d and Tag S sd Maple S85°E 21.25'
 Set 60d and Tag NW sd 4" Oak S40°W 26.04'

Set Remonumentation Monument as West Witness Corner on West Bank of the Muskegon River on Line with the NW Corner and the N 1/4 Corner location in the Muskegon River.
 Witness Corner is East of NW Corner Section 6-13-10 1742.05'
 Set 60d and Tag SE sd 12" Red Pine N52°E 8.62'
 Set 60d and Tag W sd 12" Red Pine S18°W 14.51'
 Set 60d and Tag NW sd 12" Red Pine S30°W 24.00'
 Cut + Top 3' Boulder N02°E 22.55'

APPROVED BY MECOSTA CO. PEER GROUP
IN ACCORDANCE WITH P.A. 345 of 1990

Continued on reverse side

James S. Knapp
CHAIRMAN
DATE June 11, 1999



Signed by *James J. Keller* Date June 14, 1999

Surveyor's Michigan License No. 10693

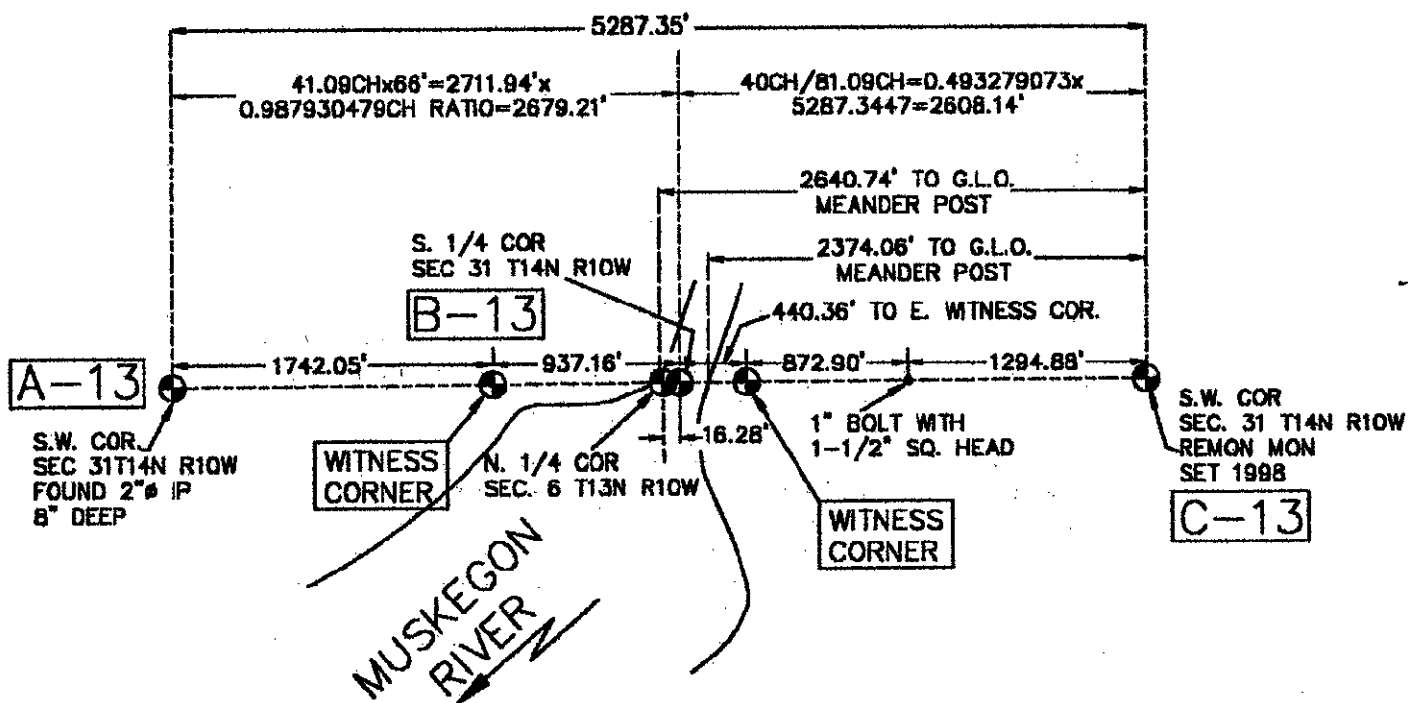
FORM APPROVED BY MICHIGAN STATE BOARD OF LAND SURVEYORS, JAN. 28, 1971
REVISED MAY 14, 1976
REVISED JAN., 1983
ADAPTED FOR WORD PROCESSING MARCH, 1983

SURVEY &
DOCUMENTATION

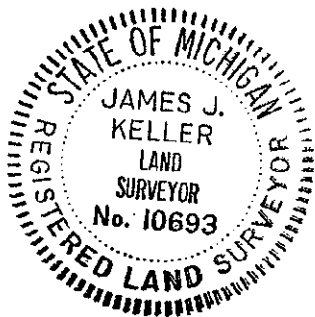
OCT 23 1999

SECTION

SEC 31 T14N R10W



SEC 6 T13N R10W



Signed by James J. Keller Date June 14, 1999
Surveyor's Michigan License No. 10693

FORM APPROVED BY MICHIGAN STATE BOARD OF LAND SURVEYORS, JAN. 28, 1971
REVISED MAY 14, 1975
REVISED JAN., 1983
ADAPTED FOR WORD PROCESSING MARCH, 1983