

B. Description of corner evidence found and/or method applied in restoring or reestablishing corner:

April 30, 1996 James J. Keller RIS #10693 Found 1/2" Iron 6" deep in center of 4" Clay tile 14" deep.
Stop Sign S 73° W - 45.56'
Fnd Nail in NE side Power Pole S 56° E - 37.25'
Stop Sign N 67° E - 44.14'

C. Description of monument for corner and accessories established to perpetuate locating the position of the corner:

Accept 1/2" Iron in center of 4" Clay tile and set Remonumentation Monument and is accepted as a careful and faithful perpetuation of the position of the original corner.

- Set 60d and Tag SE Side 8" Poplar N37°E 79.13'
- Set 60d and Tag S Side Power Pole N75°W 156.07'
- Set 60d and Tag N Side Power Pole N81°E 128.74'
- Set 60d and Tag SW Side Power Pole N52°W 52.05'

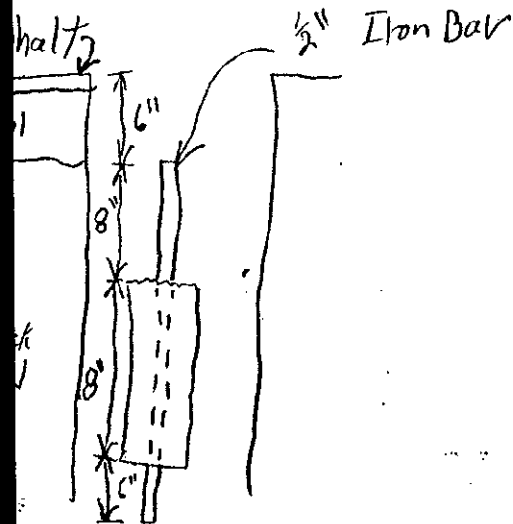


Signed by James J. Keller
Surveyor's Michigan License No. 10693

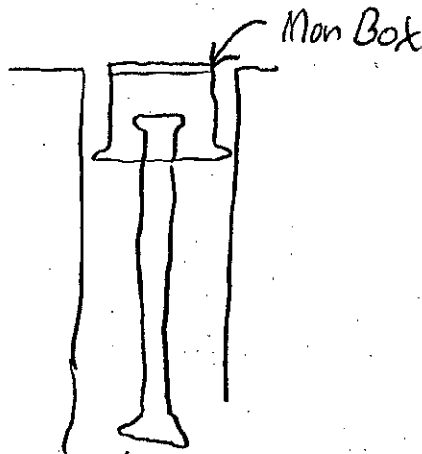
Date July 15, 1996

FORM APPROVED BY MICHIGAN STATE BOARD OF LAND SURVEYORS, JAN. 25, 1971
REVISED MAY 14, 1976
REVISED JAN., 1983
ADAPTED FOR WORD PROCESSING MARCH, 1993

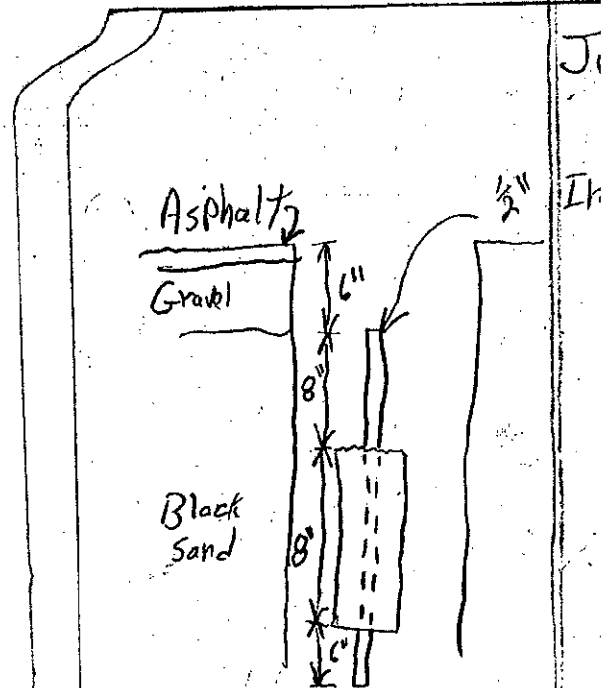
July 15 1996 LSH TDB



as Found



as Set



as Found