

LAND CORNER RECORDATION CERTIFICATE
Filing Requirement of Act 74, Mich. P.A. 1970

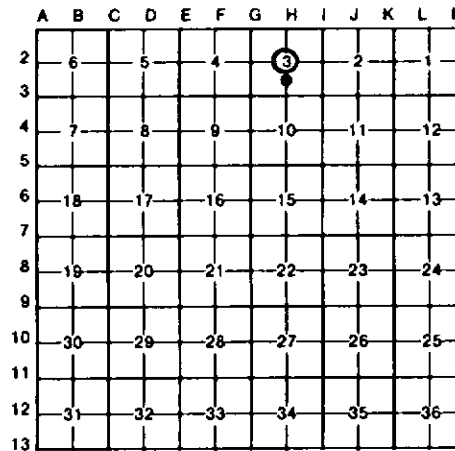
For corners in

| | | |
|---------------------------------------|----------------------------|---------------------------|
| <u>NECOSTA</u> (County) | Located In: | Corner Code ## |
| 1. Public Land Survey | T <u>15N</u> R <u>9W</u> | <u>H-2</u> |
| | T _____ R _____ | _____ |
| | T _____ R _____ | _____ |
| | T _____ R _____ | _____ |
| 2. Property Controlling in Section | S <u>3</u> T _____ R _____ | <u>12</u> |
| | S _____ T _____ R _____ | _____ |
| 3. Miscellaneous Property in Sec. | S _____ T _____ R _____ | _____ |
| | S _____ T _____ R _____ | _____ |
| 4. Lot No. _____, Recorded Plat _____ | | |
| 5. Private Claims _____ | | |

Register of Deeds Stamp & File Number

I, CARL F. ROSER, in a field survey on DECEMBER 29, 19 88, do hereby certify that under requirements of P.A. 74, Michigan P.A. of 1970, the corner points mentioned in lines 1 and 2 above were in conformance with regulations and rules therefore as required in the current manual of survey instructions of the United States Department of the Interior, Bureau of Land Management or by a decree of a Court of Law and/or that the corner points mentioned in lines 3, 4 and 5 above were in conformance with the rules of the Michigan Board of Land Surveyors or by a Decree of a Court of Law; established, re-established, monumented, re-monumented, recovered, found as expressed below:

NOTE: Not more than 4 corners, all in the same town and range, may be recorded on this certificate.



A. Description of original monument and accessories and/or subsequent restoration:

| | | | |
|------------|------------------|------------------|-----------|
| <u>H-2</u> | <u>H-2(CONT)</u> | <u>H-2(CONT)</u> | <u>12</u> |
|------------|------------------|------------------|-----------|

B. Description of corner evidence found and/or method applied in restoring or reestablishing corner:

| | | | |
|---|---|---|---|
| <u>H-2</u> | <u>H-2(CONT)</u> | <u>H-2(CONT)</u> | <u>12</u> |
| RESTORED CTR S-3 PER CO SUR N. WILLITS 1919 SUR, L.1, P.178. COR FALLS BESIDE BOTTOM OF ROTTED-OFF, *(LARGER FN POST) IN STRAIGHT OLD N-S FN. FD *(LARGER FN POST) ON GND, HAS BRACE POLE NOTCH & WIRE WRAPPED AROUND. FD OLD, VERY HEAVY, WOVEN WIRE TO N & OLD WOVEN WIRE TO S (DIFFERENT KIND THAN N). FD PINE STP REMAINS OF 1 POSSIBLE | W.WILLET'S 1919 MIT THAT FITS *(LARGER FN POST) BOTTOM. COR IS ON LINE FROM 1/8 COR TO W (CO SUR W.WILLET ESTAB'D IN 1919, RLS G.BLASS USED IN 1964) & WITH FD BLASS IRONS, 404'W & 1016'W. COR IS VERY CLOSE TO A STRAIGHT LINE ACROSS FD OLD 1/8 COR & 1/4 COR TO W. COR REASONABLY FITS FD OLD 1/8 COR & 1/4 COR TO E. COR FITS VERY REASONABLE TO | OLD 1/8 COR TO S (S 1/4 COR FALLS IN LAKE). SEE WILLITS SURVEY OF S-3 IN L.1 OF CO SURVEY RECORDS, P.178; AND RLS, G.BLASS 1946 SURVEY FOR A. SAKMAR. | RECOVERED OLD 1 1/4" PIPE FOR SE COR, NE 1/4-SW 1/4 S-3. COR IS E.E.SOURS, ENGINEER, 1925 COR OF RECORD FROM CO SURVEY L.1, P.202. COR IS IN OLD N-S WOVEN WIRE FN; THE S END OF FN IS 4' S. SOURS RETRACED SOME OF WILLITS 1919 LINES. |

C. Description of monument for corner and accessories established to perpetuate locating the position of the corner:

| | | | |
|---|------------------|------------------|--|
| <u>H-2</u> | <u>H-2(CONT)</u> | <u>H-2(CONT)</u> | <u>12</u> |
| SET 1" X 3/8" GALV PIPE W/CROSS ARM & CED POST W/LOC TAG. 6" R OAK N15°E 13.5' 4" W PINE N50°E 43.2' 9" MAPLE S45°E 27.7' 3" MAPLE (CLP 2) N70°W 14.9' CTR N-S TRL WEST 70' FN COR (FNS N-S-W) SOUTH 235' | | | FD OLD 1 1/4" BATTERED OVER PIPE; ADD CED POST W/LOC TAG. 9" SPRUCE DUE E 6.20' NW COR HSE S50°W 52.7' CTR GR RD DUE S 128'±2' N'LY EDGE LK DUE S 173'±4' #31" W OAK N31°E 36.5' (WAS 10") (37.5') |

* = E.E.SOUR'S NBY

Signed by Carl F. Roser 03-09-89 Date _____
 Surveyor's Michigan License No. 12028

