

LAND CORNER RECORDATION CERTIFICATE
Filing Requirement of Act 74, Mich. P.A. 1970

For corners in
NECOSTA

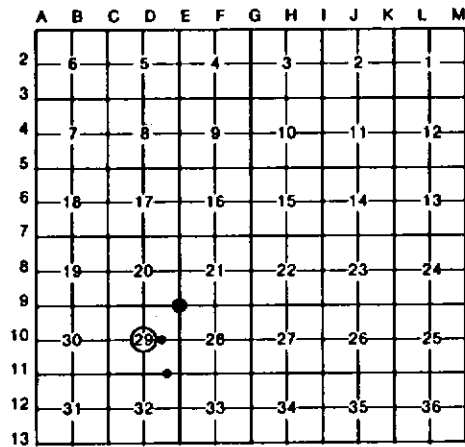
Located In: _____ Corner Code: ## _____

1. Public Land Survey	T	16 N	R	9 W	D-10
	T		R		E-9
	T		R		
	T		R		
2. Property Controlling in Section	S	29	T	R	9
	S		T	R	
3. Miscellaneous Property in Sec.	S	29	T	R	* = 685.9 W OF E-11.
	S		T	R	

Register of Deeds Stamp & File Number

4. Lot No. _____, Recorded Plat _____
 5. Private Claims _____

I, CARL F. ROSER, in a field survey on JANUARY 15, 19 88, do hereby certify that under requirements of P.A. 74, Michigan P.A. of 1970, the corner points mentioned in lines 1 and 2 above were in conformance with regulations and rules therefore as required in the current manual of survey instructions of the United States Department of the Interior, Bureau of Land Management or by a decree of a Court of Law and/or that the corner points mentioned in lines 3, 4 and 5 above were in conformance with the rules of the Michigan Board of Land Surveyors or by a Decree of a Court of Law; established, re-established, monumented, re-monumented, recovered, found as expressed below:



NOTE: Not more than 4 corners, all in the same town and range, may be recorded on this certificate.

A. Description of original monument and accessories and/or subsequent restoration:

D-10	E-9	9	*
ESTABLISH CTR. S-29 AT INTERSECTING 1/4 LINES. THE N 1/4 COR., S-29 IS 2642.43' W AND THE S 1/4 COR., S-29 IS 2639.25' S OF CTR. S-29 AS ESTABLISHED AT INTERSECTION OF 1/4 LINES. THE FD. 1/2" PIPE W/GROUND WIRE CLAMP IS IN APPROX. CTR. OF E-W DIRT RD. AND 2640' W OF E 1/4 OF S-29!!	ACCEPTED FD. PIPE FOR NE COR. S-29. PIPE WAS BURIED 3"; 1' E OF CTR. N-S BIT. RD. AND IN APPROX. CTR. OF DIRT RDS. LOOKING E AND W.	ESTABLISHED NW COR., NE 1/4, SE 1/4 OF S-29 PER STD. BLM INSTRUCTIONS.	ESTABLISHED SE COR., W 1/2, SE 1/4, SE 1/4 OF S-29 PER STD. BLM INSTRUCTIONS.

C. Description of monument for corner and accessories established to perpetuate locating the position of the corner:

D-10	E-9	9	*
DROVE 5/8"x34" RE-ROD W/ RLS CAP; SET CED. POST W/LOC. TAG. 3" MAPLE N50°E 69.93'	FD. 3/4" PIPE 28" SUB. MAPLE N25°W 59.49'	DROVE 5/8"x34" RE-ROD W/ RLS CAP. POWER POLE N80°W 100.87'	DROVE 5/8"x36" RE-ROD W/ RLS CAP; SET CED. POST W/LOC. TAG. 12" B. CHERRY N20°W 10.3'
POWER POLE N80°W 28.58'	6" R. PINE S60°W 65.10'	NE COR. STONE MASONRY BLDG. FD. S30°E 74.5'	9" B. CHERRY N20°E 16.0'
5" MAPLE S30°W 62.96'	32" SUB. MAPLE S35°W 57.11'	NE COR. 2'x3' ROCK S66°W 87.4'	3" R. OAK S20°W 6.0'
9" MAPLE S25°E 69.53'	CTR. 4"x4" MBT PEDESTAL S50°E 46.3'	FN. S'LY DUE N 138 1'	12" R. OAK S50°W 28.9'
CTR. E-W DIRT RD. DUE S 15'		CTR. E-W DIRT RD DUE S 2'	
FD. 1/2" PIPE W/ GND. WIRE CLAMP S77°23' E 63.19'			

Signed by Carl F. Roser Date _____
 Surveyor's Michigan License No. 12028

