

LAND CORNER RECORDATION CERTIFICATE
Filing Requirement of Act 74, Mich. P.A. 1970

For corners in
NECOBTA

(County)

Located In:

Corner Code ~~##~~

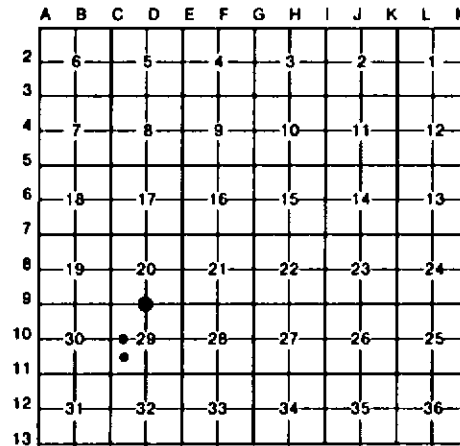
1. Public Land Survey	T <u>16</u> N R <u>9</u> W	<u>D-9</u>
	T _____ R _____	_____
	T _____ R _____	_____
	T _____ R _____	_____
2. Property Controlling in Section	S <u>29</u> T _____ R _____	<u>8</u>
	S <u>29</u> T _____ R _____	<u>11</u>
3. Miscellaneous Property in Sec.	S _____ T _____ R _____	_____
	S _____ T _____ R _____	_____

Register of Deeds Stamp & File Number

4. Lot No. _____, Recorded Plat _____
 5. Private Claims _____

I, CARL F. ROSER, in a field survey on JANUARY, 14TH, 19 88, do hereby certify that under requirements of P.A. 74, Michigan P.A. of 1970, the corner points mentioned in lines 1 and 2 above were in conformance with regulations and rules therefore as required in the current manual of survey instructions of the United States Department of the Interior, Bureau of Land Management or by a decree of a Court of Law and/or that the corner points mentioned in lines 3, 4 and 5 above were in conformance with the rules of the Michigan Board of Land Surveyors or by a Decree of a Court of Law; established, re-established, monumented, re-monumented, recovered, found as expressed below:

NOTE: Not more than 4 corners, all in the same town and range, may be recorded on this certificate.



A. Description of original monument and accessories and/or subsequent restoration:

D-9 D-9 CONT. 8 11

B. Description of corner evidence found and/or method applied in restoring or reestablishing corner:

D-9	D-9 CONT.	8	11
RESTORED 1/4 COR. COMMON TO S-20 AND 29 ON LINE BTWN. SEC. CORRS. 1/2 MILE TO E AND W. COR IS ON LINE ACROSS FD. OLD CTR. S-20 (FD. OLD 1/2" PIPE) AND POSITION FOR N 1/4 S-20 BY OCCUPANCY (CTR. E-W BIT. RD. AND LINE FN. TO W). COR. ALSO FITS DBL. DIST. AND ON LINE ACROSS FD. OLD CTR. S-20 TO N AND FD. 1/8 COR. TO N (COR. FN. POST, OLD FNS. AND	NEW N-S-E-W). THIS 1/4 COR. POSITION LEAVES 2651.57' N TO FD. CTR. S-20 AND 2642.43' S TO CTR. S-29. FD OLD N.W.FM S'LY (S OF RD) IS 41'±2' W. FD OLD FN NL'Y IS 28'±1' W.	ESTABLISHED N.W. COR SW 1/4 OF S-29 PER STD. BLM INSTRUCTIONS.	NE 1/4, ESTABLISHED NW COR., SE 1/4 SW 1/4 OF S-29 PER STD BLM INSTRUCTIONS. COR. FALLS IN TAMARACK, B. SPRUCE AND BRUSH SWP.

C. Description of monument for corner and accessories established to perpetuate locating the position of the corner:

D-9	D-9 CONT.	8	11
DROVE 1" X 5' GALV. PIPE W/RLS CAP; SET CED. POST W/LOC. TAG. 10" MAPLE N60°W 19.10' 8" T. MAPLE N40°W 6.65' 9" MAPLE N20°E 19.11' 9" MAPLE IN CLUMP OF 4 S40°E 15.60' CTR. E-W DIRT ROAD DUE S 31'	FD 5/8"x18" RE-ROD S40° 51'W 40.87'	DROVE 5/8" X 3/4" RE-ROD W/RLS CAP; SET CED. POST W/LOC. TAG. 3" MAPLE IN CLUMP OF 3 N40°W 44.23' 4" MAPLE IN CLUMP OF 4 N65°E 50.97' 4" MAPLE S35°E 69.90' 9" W. PINE S20°W 93.96' CTR. E-W DIRT RD. DUE S 31'	DROVE 1" X 80" PIPE W/ RLS CAP; SET CED. POST W/LOC. TAG. 8" TAMARACK N15°W 21.9' 4" TAMARACK N15°E 8.1' 5" R. PINE ON ISLAND OF HIGH GRD. S40°E 108.4' 7" TAMARACK S45°W 27.2'

Signed by Carl F. Roser 12-12-90 Date _____

Surveyor's Michigan License No. 12028

FORM APPROVED BY MICHIGAN STATE BOARD OF LAND SURVEYORS

