

APPROVED LAND CORNER

450

P.A. 345 of 1990 LAND CORNER RECORDATION CERTIFICATE
MIDLAND COUNTY Filing Requirement of Act 74, Mich. P.A. 1970
Midland County Remonumentation

11/12/99 *MR*

For Corners in
Midland

(County)	Located In:	Corner Code#:
1. Public Land Survey	T. <u>13N</u> R. <u>1E</u>	<u>I-13</u>
	T. _____ R. _____	_____
	T. _____ R. _____	_____
2. Public Controlling in Section	S. _____ T. _____ R. _____	_____
	S. _____ T. _____ R. _____	_____
3. Miscellaneous Property in Section	S. _____ T. _____ R. _____	_____
	S. _____ T. _____ R. _____	_____
4. Lot No. _____, Recorded Plat		
5. Private Claims		

STATE OF MICHIGAN
MIDLAND COUNTY
RECORDED

12/7/1999 2:59:31 PM

SCOTT I. HAINES
REGISTER OF DEEDS

Register of Deeds Stamp & File Number

I, Mark R. Robison, in a field survey on October 29, 1999, do hereby certify that under requirements of P.A. 74, Michigan P.A. of 1970, the corner points mentioned in lines 1 and 2 above were in conformance with regulations and rules therefore as required in the current manual of survey instructions of the United States Department of the Interior, Bureau of Land Management or by a decree of a Court of Law and/or that the corner points mentioned in lines 3, 4 and 5 above were in conformance with the rules of the Michigan Board of Land Surveyors or by a Decree of a Court of Law, established, re-established, monumented, re-monumented, recovered, found as expressed below.

NOTE: Not more than 2 corners, all in the same town and range, may be recorded on this certificate.

	A	B	C	D	E	F	G	H	I	J	K	L	M
1													
2	6	5	4	3	2	1							
3													
4	7	8	9	10	11	12							
5													
6	18	17	16	15	14	13							
7													
8	19	20	21	22	23	24							
9													
10	30	29	28	27	26	25							
11													
12	31	32	33	34	35	36							
13													

A. Description of original monument and accessories and/or subsequent restoration:

1830 Clark	1909 Gibbs. CSR
Cor of 34-35	Stone Old Corner in highway even
Beech 10 N69E 20	with surface
Birch 12 N57W 27	Meas. East 80.11 North 80.20

SURVEY &
REMONUMENTATION

FEB 09 2000

SECTION

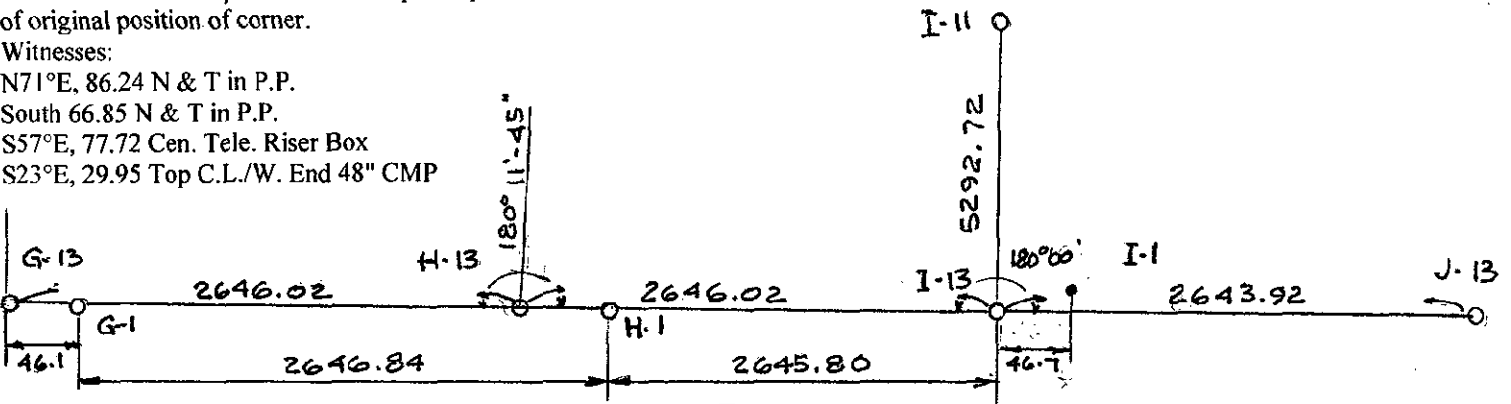
B. Description of corner evidence found and/or method applied in restoring or re-establishing corner:

Set I-13 on line between standard corner J-13 & closing corner H-1 at G.L.O. falling (46.70) West of I-1, T12N, R1E. Cor falls 4 feet South of P.K. at I-1 and approximately 3 feet South of C.L. Asphalt. Calculated position of H-13 at S.P.M. between I-13 and G-13 and Meas. West 2646.02 from I-13 to H-13. Meas. East 2643.92 from I-13 to J-13. Gibbs measurers 5287.26 from I-13 to K-13, or 2643.62 from I-13 to J-13 if J-13 is set at S.P.M. Meas. North 5292.72 (Gibbs 5293.2) from I-13 to I-11. (See sketch)

C. Description of monument for corner and accessories established to perpetuate locating the position of the corner:

Set 5/8" x 18" Gas Pipe with Brass Cap stamped Midland Co. Remon Corner P.S. #27458 in Mon. Box. Accepted as best available evidence of original position of corner.

Witnesses:
 N71°E, 86.24 N & T in P.P.
 South 66.85 N & T in P.P.
 S57°E, 77.72 Cen. Tele. Riser Box
 S23°E, 29.95 Top C.L./W. End 48" CMP



Signed by Mark R. Robison
Surveyor's Michigan License No. 27458

Date 11-29-99



FORM APPROVED BY MICHIGAN STATE BOARD OF LAND SURVEYORS, JAN. 28, 1971

REVISED MAY 14, 1975
REVISED JAN., 1983