

APPROVED LAND CORNER
P.A. 345 OF 1990
MIDLAND COUNTY

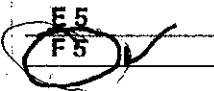
Midland County Remonumentation

Sequence # 2

LAND CORNER RECORDATION CERTIFICATE
Filing Requirement of Act 74, Mich. P.A. 1970

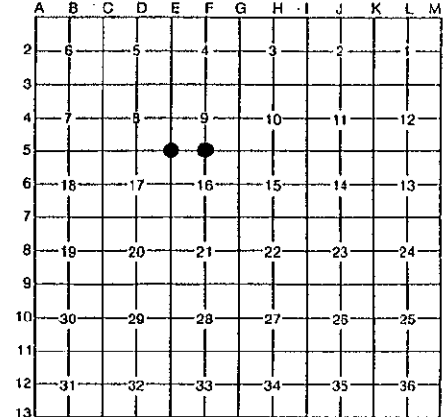
229

For corners in Midland (County) Located In: Corner Code #

Public Land Survey	T <u>14N</u> R <u>1W</u>	
	T <u>14N</u> R <u>1W</u>	
	T _____ R _____	
	T _____ R _____	
	T _____ R _____	
Property Controlling in Section	S _____ T _____ R _____	
Miscellaneous Property in Section	S _____ T _____ R _____	

STATE OF MICHIGAN
MIDLAND COUNTY
REMONUMENTATION & FILED
14 AUG 95 3:01 P.H.
BEVERLY J THAYER
REGISTER OF DEEDS
Register of Deeds Stamp & File Number

1. Lot No. _____, Recorded Plat _____
2. Private Claims _____



Craig W. McVean, in a field survey on June, 1995,
to hereby certify that under requirements of P.A. 74, Michigan P.A. of 1970, the corner points mentioned
in lines 1 and 2 above were in conformance with regulations and rules therefore as required in the current
manual of survey instructions of the United States Department of the Interior, Bureau of Land
Management or by a decree of a Court of Law and/or that the corner points mentioned in lines 3, 4 and
5 above were in conformance with the rules of the Michigan Board of Professional Surveyors or by a
decree of a Court of Law; established, re-established, monumented, re-monumented, recovered, found
is expressed below:

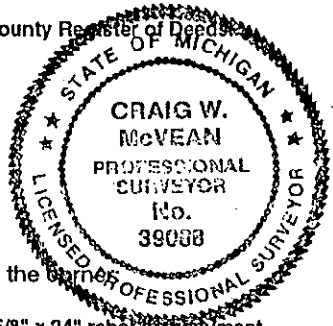
NOTE: Not more than 4 corners, all in the same town and range, may be recorded on this certificate.

1. Description of original monument and accessories and/or subsequent restoration:
- | | |
|--|--|
| <u>E 5</u> Midland County Remonumentation L.C.R.C. -
Remonumentation L. 1, P. 7 - found 1/2" Iron pipe - Caldwell - 1993. | <u>F 5</u> Midland County Remonumentation L.C.R.C. -
Remonumentation L. 1, P. 8 - found 5/8" bar - Caldwell - 1993. |
|--|--|

3. Description of corner evidence found and/or method applied in restoring or reestablishing corner:
- | | |
|---|--|
| <u>E 5</u> Recorded monument and Witnesses obliterated during 1994-1995 reconstruction of Highway M-20. Find reaction deep in road. Dlg down 2.2' and find 1 1/4" solid Iron rod at location of record 1/2" Iron pipe. Raised iron rod to surface with 2" Midland County brass cap on 5/8" x 24" rebar in monument box. | <u>F 5</u> Recorded monument obliterated during 1994-1995 reconstruction of Highway M-20. Reset 2" Midland County brass cap on 5/8" x 24" rebar in monument box per remonumentation L.C.R.C. Witnesses and Witnesses taken before obliteration of recorded monument. |
|---|--|

Also see Dossier on file at Midland County Register of Deeds.

Also see Dossier on file at Midland County Register of Deeds.



2. Description of monument for corner and accessories established to perpetuate locating the position of the corner:
- | | |
|--|--|
| <u>E 5</u> 2" Midland County brass cap on 5/8" x 24" rebar in monument box over 1-1/4" solid iron rod.

S 00°59'15" E (R) 7.60' (R&M) to 5/8" x 24" long rebar in monument box being position of 1/2" bar as referenced in Remonumentation L.C.R.C. - p. 7.
S 20° E (S 25° E - R) 99.06' (98.99' - R) to nail and tag #12018 in W side 10" Ash (10" Maple -R).
N 20° W (R&M) 84.02' (84.10' - R) to PK nail in W side U.P.
S 10° E (S 21° E - R) 145.64' (145.55' - R) to nail and tag #11192 in E side U.P.
S 66° W 187.25' to set nail and tag in NW side 26" Maple clump.
N 06° E 104.38' to top 3" iron post. | <u>F 5</u> 2" Midland County brass cap on 5/8" x 24" rebar in monument box.
N 05° E 79.69' guy pole (R).
S 05° E 66.48' P.P. (R).
S 13° E 150.14' to nail and tag in W face 5" Twin Maple.
S 05° W 140.89' to NE corner garage at House #1745.
S 40° W 132.46' to nail and tag in NW face 30" Maple.
N 05° W 165.56' to nail and tag in S face 14" Poplar.
N 45° E 111.87' to nail and tag NW face 4" Pine. |
|--|--|

Signed by Craig W. McVean Date 8-7-95
Surveyor's Michigan License No. 39088