

Sequence #2

7/18/95

LAND CORNER RECORDATION CERTIFICATE
Filing Requirement of Act 74, Mich. P.A. 1970

230

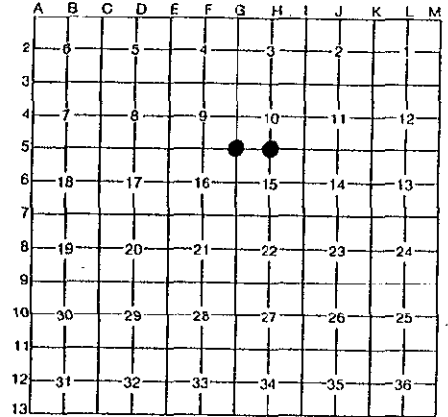
For corners in Midland (County) Located In: Corner Code #

- | | | | |
|--------------------------------------|--------------|-------------|--------------|
| 1. Public Land Survey | T <u>14N</u> | R <u>1W</u> | <u>G 5</u> |
| | T <u>14N</u> | R <u>1W</u> | <u>H 5</u> ✓ |
| | T _____ | R _____ | _____ |
| | T _____ | R _____ | _____ |
| 2. Property Controlling in Section | S _____ | T _____ | R _____ |
| | S _____ | T _____ | R _____ |
| 3. Miscellaneous Property in Section | S _____ | T _____ | R _____ |
| | S _____ | T _____ | R _____ |
4. Lot No. _____, Recorded Plat _____
5. Private Claims _____

STATE OF MICHIGAN
MIDLAND COUNTY
REMONUMENTATION & FILED

14 AUG 95 3:02 P.M.

BEVERLY J THAYER
Register of Deeds & File Number
REGISTER OF DEEDS



I, Craig W. McVean, in a field survey on June, 19 95, do hereby certify that under requirements of P.A. 74, Michigan P.A. of 1970, the corner points mentioned in lines 1 and 2 above were in conformance with regulations and rules therefore as required in the current manual of survey instructions of the United States Department of the Interior, Bureau of Land Management or by a decree of a Court of Law and/or that the corner points mentioned in lines 3, 4 and 5 above were in conformance with the rules of the Michigan Board of Professional Surveyors or by a Decree of a Court of Law; established, re-established, monumented, re-monumented, recovered, found as expressed below:

NOTE: Not more than 4 corners, all in the same town and range, may be recorded on this certificate.

A. Description of original monument and accessories and/or subsequent restoration:

G 5 Midland County Remonumentation L.C.R.C. - Remonumentation L. 1, P. 9 - found 3/4" pipe in monument box - Caldwell - 1993.

H 5 Midland County Remonumentation L.C.R.C. - Remonumentation L. 1, P. 11 - found 1" pipe - Caldwell - 1993.

B. Description of corner evidence found and/or method applied in restoring or reestablishing corner:

G 5 Record monument obliterated during 1994-1995 reconstruction of Highway M-20. Reset 2" Midland County brass cap on 5/8" x 24" rebar in monument box per remonumentation L.C.R.C. Witnesses and Witnesses taken before obliteration of recorded monument.

H 5 Recorded monument obliterated during 1994-1995 reconstruction of Highway M-20. Reset 2" Midland County brass cap 5/8" x 24" rebar in monument box per remonumentation L.C.R.C. Witnesses and Witnesses taken before obliteration of recorded monument.

Also see Dossier on file at Midland County Register of Deeds.

Also see Dossier on file at Midland County Register of Deeds.



C. Description of monument for corner and accessories established to perpetuate locating the position of the corner:

G 5 2" Midland County brass cap on 5/8" x 24" rebar in monument box.
S 15° E 109.31' nail in P.P. (R).
N 25° E 94.50' light support pole (R).
S 40° E 145.01' nail and tag P.P. (R).
N. 20° W 166.07' to SE corner garage at House #1516.
N 20° E 97.18' to centerline concrete right-of-way marker.
N 50° E 157.96' to SW corner House #1488.
S 38° E 197.72' to NW corner garage at House #1481.

H 5 2" Midland County brass cap on 5/8" x 24" rebar in monument box.
S 04° W 65.92' 15" Ash (Oak - R) (R).
S 29° W 70.43' Triple 30" Ash (Twln Oak - R) (R).
N 30° W 201.07' to SW corner House #1256.
S 30° E 157.95' to NW corner siding on House #1423.
S 50° E 122.93' to nail and tag in E face U.P.
S 10° W 60.76' to nail and tag in E face Twln 8" Maple.
S 56° W 103.93' to nail and tag in W face Twln 18" Maple.

Signed by Craig W. McVean Date 7/6/95
Surveyor's Michigan License No. 39088