

APPROVED LAND CORNER
P.A. 345 OF 1990
MIDLAND COUNTY

SURVEY &
REMONUMENTATION

APR 28 1995

12/05/94

LAND CORNER RECORDATION CERTIFICATE
Filing Requirement of Act 74, Mich. P.A. 1970

184

For corners in

MIDLAND (County)	Located In:	Corner Code #
1. Public Land Survey	T 14N R 1W	H-11
	T _____ R _____	_____
	T _____ R _____	_____
	T _____ R _____	_____
2. Property Controlling in Section	S _____ T _____ R _____	_____
	S _____ T _____ R _____	_____
3. Miscellaneous Property in Sec.	S _____ T _____ R _____	_____
	S _____ T _____ R _____	_____

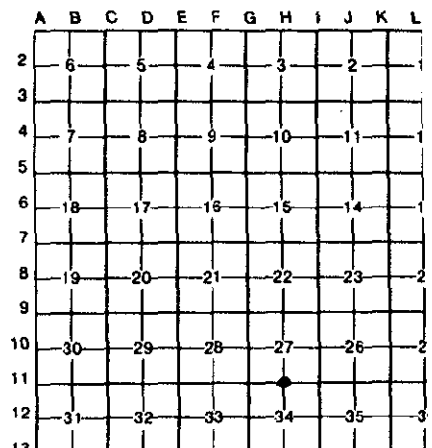
STATE OF MICHIGAN
MIDLAND COUNTY
REMONUMENTATION & FILED

21 DEC 94 11:17 A.M.

BEVERLY J THAYER
REGISTER OF DEEDS

Register of Deeds Stamp & File Number

4. Lot No. _____, Recorded Plat _____
5. Private Claims _____



I, PAUL B. LAPHAM, in a field survey on NOVEMBER, 19 94, do hereby certify that under requirements of P.A. 74, Michigan P.A. of 1970, the corner points mentioned in lines 1 and 2 above were in conformance with regulations and rules therefore as required in the current manual of survey instructions of the United States Department of the Interior, Bureau of Land Management or by a decree of a Court of Law and/or that the corner points mentioned in lines 3, 4 and 5 above were in conformance with the rules of the Michigan Board of Land Surveyors or by a Decree of a Court of Law; established, re-established, monumented, re-monumented, recovered, found as expressed below:

NOTE: Not more than 4 corners, all in the same town and range, may be recorded on this certificate.

A. Description of original monument and accessories and/or subsequent restoration:

1852 AUSTIN BURT,
WIT.-B. ASH 8" S22°W 14 LKS.
TAMARACK 12" N18°W 34 LKS.

10-20-80 PAUL LAPHAM, L.C.R.C. #527
FOUND 5/8" ROD
WIT.-(1)N70°W 98.20' POWER POLE
(4)N45°E 40.25' 12" ASH
(5)S60°W 85.38' 6" MAPLE

3-15-85 LEDY, (132)
FOUND 5/8 ROD
WIT.-(1)W. NW 98.18' NAIL IN POWER POLE
(4)N. NE 40.13' NAIL IN 12" ASH
(6)S. SE 135.44' FACE OF POWER PO

4-27-73 A.V. COURTRIGHT, L.C.R.C.
SET 5/8" IRON EQUAL DISTANCE ON LINE
WIT.-(1)POWER POLE N75°W 98.20'
(2)SOUTH END OF TUBE S50°E 23.69'
(3)NORTH END OF TUBE N50°E 26.45'

3-8-83 JERRY JONES, L.C.R.C.
(P.B.L. NOTE: THIS CORNER IS INDEXED IN
WRONG TOWNSHIP.)

B. Description of corner evidence found and/or method applied in restoring or reestablishing corner:

H-11: 1/4 Corner common to Sections 27 & 34
FOUND 5/8"x1" ROD. EXCAVATED TO 3' DEPTH. DID NOT FIND FURTHER EVIDENCE.
FOUND RECORDED WITNESSES - (1), (2), (3), (4), & (6).

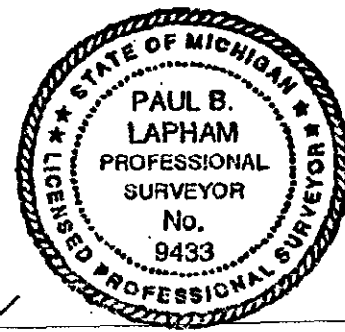
Accepted as best available evidence of the position of the original corner & replaced with Standard Monument.

Corner, H-11 was approved for remonumentation at a Peer Review Committee Meeting on 12-05, 19 94.

C. Description of monument for corner and accessories established to perpetuate locating the position of the corner:

H-11: Corner common to Sections 27 & 34
Set 5/8" x 36" re-rod with brass cap stamped "Midland Co. Remon. Cor. PS 9433" in Monument Box.

WITNESSES:
N70°W 98.20' - NAIL & TAG IN POWER POLE (1)
S50°E 23.69' SOUTH END OF TUBE (2)
N50°E 26.45' NORTH END OF TUBE (3)
N45°E 40.25' - NAIL & TAG IN 15" ASH (4)



Signed by Paul B. Lapham

Date 12/19/94

Surveyor's Michigan License No. 9433