

*Sequence # 2*

LAND CORNER RECORDATION CERTIFICATE

228

Filing Requirement of Act 74, Mich. P.A. 1970

For corners in  
Midland  
(County)

Located In:

Corner Code #

- |                                    |   |            |   |           |
|------------------------------------|---|------------|---|-----------|
| 1. Public Land Survey              | T | <u>14N</u> | R | <u>1W</u> |
|                                    | T | <u>14N</u> | R | <u>1W</u> |
|                                    | T |            | R |           |
|                                    | T |            | R |           |
| 2. Property Controlling in Section | S |            | T | R         |
|                                    | S |            | T | R         |
| 3. Miscellaneous                   | S |            | T | R         |
| Property in Section                | S |            | T | R         |

C5  
D5

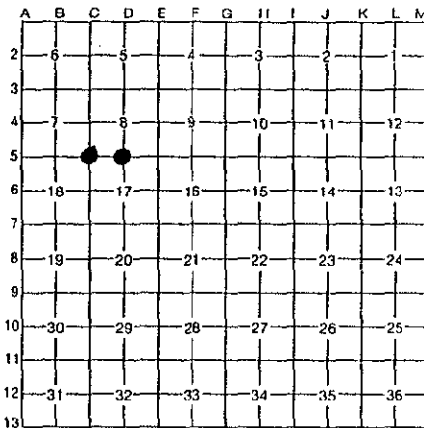
STATE OF MICHIGAN  
MIDLAND COUNTY  
REMONUMENTATION & FILED

14 AUG 95 3:01 P.M.

BEVERLY J THAYER  
REGISTER OF DEEDS

Register of Deeds Stamp & File Number

4. Lot No. \_\_\_\_\_, Recorded Plat \_\_\_\_\_  
5. Private Claims \_\_\_\_\_



I, Craig W. McVean, in a field survey on June, 1995

do hereby certify that under requirements of P.A. 74, Michigan P.A. of 1970, the corner points mentioned in lines 1 and 2 above were in conformance with regulations and rules therefore as required in the current manual of survey instructions of the United States Department of the Interior, Bureau of Land Management or by a decree of a Court of Law and/or that the corner points mentioned in lines 3, 4 and 5 above were in conformance with the rules of the Michigan Board of Professional Surveyors or by a Decree of a Court of Law; established, re-established, monumented, re-monumented, recovered, found as expressed below:

NOTE: Not more than 4 corners, all in the same town and range, may be recorded on this certificate.

A. Description of original monument and accessories and/or subsequent restoration:

C 5 Midland County Remonumentation L.C.R.C. - Remonumentation L. 1, P. 5 - found 3/4" iron pipe in monument box - Caldwell - 1993.

D 5 Midland County Remonumentation L.C.R.C. - Remonumentation L. 1, P. 6 - found 3/4" iron pipe - Caldwell - 1993.

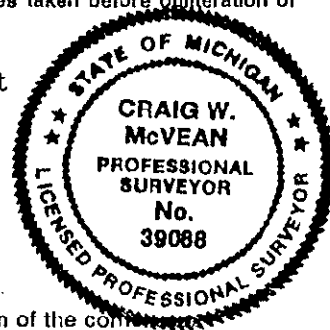
B. Description of corner evidence found and/or method applied in restoring or reestablishing corner:

C 5 Recorded monument obliterated during 1994-1995 reconstruction of Highway M-20. Reset 2" Midland County brass cap on 5/8" x 24" rebar in monument box per remonumentation L.C.R.C. Witnesses and Witnesses taken before obliteration of recorded monument.

D 5 Recorded monument obliterated during 1994-1995 reconstruction of Highway M-20. Reset 2" Midland County brass cap on 5/8" x 24" rebar in monument box remonumentation. L.C.R.C. Witnesses and Witnesses taken before obliteration of recorded monument.

Also see Dossier on file at Midland County Register of Deeds.

Also see Dossier on file at Midland County Register of Deeds.



C. Description of monument for corner and accessories established to perpetuate locating the position of the corner:

C 5 2" Midland County brass cap on 5/8" x 24" rebar in monument box.  
N 50° W 148.30' 10" Black Oak (R).  
S 50° W 85.90' found Pk In P.P. (R).  
N 33° E 261.93' to SE corner of House.  
N 28° W 176.58' to nail and tag In E face 26" Oak.  
S 42° E 136.21' to NW corner of House #2495.  
S 50° E 165.93' to found nail In U.P.  
S 10° E 134.90' to nail and tag in W face 12" box elder.

D 5 2" Midland County brass cap on 5/8" x 24" rebar in monument box.  
N 10° E 87.01' P.P. (R).  
S 45° W 123.78' P.P. (R).  
S 03° W 65.42' to railroad spike in U.P.  
S 10° W 154.51' to NE corner of House.  
N 23° E 134.82' to nail and tag in W face Twln 12" Oak.  
S 40° E 212.46' to NW corner House #2215.

Signed by Craig W. McVean Date 7/6/95  
Surveyor's Michigan License No. 39088