

**LAND CORNER RECORDATION CERTIFICATE**  
**Filing Requirement of Act 74, Mich. P.A. 1970**

For corners in  
**MIDLAND**

(County)

Located In:

Corner Code ~~##~~

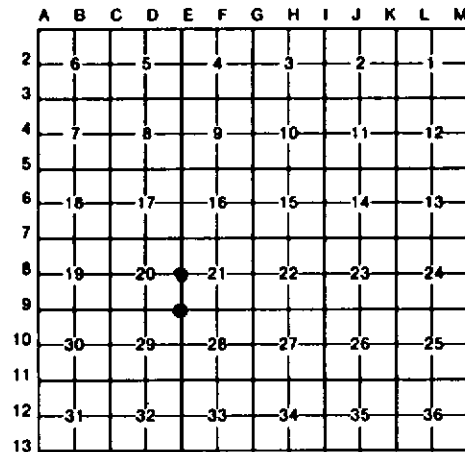
1. Public Land Survey	T	<u>15N</u>	R	<u>2W</u>	<u>E-9, E-8</u>
	T		R		
	T		R		
	T		R		
2. Property Controlling in Section	S		T		
	S		T		
3. Miscellaneous Property in Sec.	S		T		
	S		T		

Register of Deeds Stamp & File Number

4. Lot No. \_\_\_\_\_, Recorded Plat \_\_\_\_\_  
 5. Private Claims \_\_\_\_\_

I, C.F. ROSE, in a field survey on 11-30, 19 90, do hereby certify that under requirements of P.A. 74, Michigan P.A. of 1970, the corner points mentioned in lines 1 and 2 above were in conformance with regulations and rules therefore as required in the current manual of survey instructions of the United States Department of the Interior, Bureau of Land Management or by a decree of a Court of Law and/or that the corner points mentioned in lines 3, 4 and 5 above were in conformance with the rules of the Michigan Board of Land Surveyors or by a Decree of a Court of Law; established, re-established, monumented, re-monumented, recovered, found as expressed below:

**NOTE: Not more than 4 corners, all in the same town and range, may be recorded on this certificate.**



~~A. Description of original monument and accessories and/or subsequent restoration:~~

E-9

E-8

(B CONT.)

E-8 (CONT)

E-8 (CONT)

SEE SURVEY FILE FOR, JIM MIDDLETON (AGE 60) AND LEWIS BAUDER (AGE 50) TESTIMONY, AND FOR WORKING DRAWING AND OCCUPANCY TIES. THERE ARE APPROX. 10 SMALL ACREAGE PARCELS THAT FRONT ON THE W. LINE OF SEC 21, THAT WERE CREATED WITH-OUT BENEFIT OF

SURVEY, THAT ARE BASED ON A 5280 FOOT MILE. OUR 1/4 CORNER POSITION MEAS 2644.88' TO SEC COR'S TO N & S. OUR W. LINE OF SEC 28 MEAS 5287.72'.

B. Description of corner evidence found and/or method applied in restoring or reestablishing corner:

E-9

E-8

E-8 (CONT)

E-8 (CONT)

REESTABLISHED NE COR SEC 29 ON LINE ACROSS FD NE & N1/4 COR'S SEC 28 AND AT PRORATED DIST TO U.S. (BLD) BETWEEN FD NE COR S-28 AND FD NW COR OF SEC 29. CTR N-S DIRT RD IS 12' W. COR IS IN APPROX CTR DRIVE-WAY LOOKING TO EAST.

REESTABLISHED 1/4 COR COMM. TO SEC'S 20 & 21 EQUIDISTANT BETWEEN SEC COR'S 1/2 MILE TO NORTH AND SOUTH AND ON CENTER LINE OF LONG ESTABLISHED GRAVEL ROAD FOR 1/2 MILE TO NORTH. THE N-S ROAD FOR 1/2 MILE TO SOUTH APPEARS TO BE ON EYE-BALL EXTENSION OF 1/2 MILE TO NORTH AND HAS BEEN IMPROVED SOME-WHAT IN MORE RECENT TIMES. OLD E-W FENCES TO E & W

(NO COR POSTS OR END POSTS AT APPROX ROW LINE'S) ARE 15.5' TO NORTH. THE FN TO EAST (ORIGINAL) APPEARS TO HAVE BEEN KEPT UP FROM TIME TO TIME IN OLD POSITION AND CAN BE DATED BACK 50 YRS OR MORE. THE E-W TEED DRAIN 1/4 MILE TO NORTH HAS APPROX. N 1/8 LINE FN'S TO E & W (4' JOB) ON N SIDE OF DRAIN; JIM MIDDLETON SAY'S HIS DAD (DATING BACK TO

1902) SAID THE APPROX CTR OF TEED DRAIN WAS CONSTRUCTED ON THE N 1/8 LINE; LEWIS BAUDER (HIS WIFE A BARRETT) STATING ALSO THAT THE APPROX 1/8 LINE FN RUNNING EAST IS ON MIDDLETON PROPERTY DR N OF TEED DRAIN THAT IS ON 1/8 LINE. THE 1/4 COR TO SEC'S 20 & 21, AS REESTAB. ABOVE, FITS THE APPROX CTR OF E-W TEED DRAIN 1/4 MILE TO NORTH.

C. Description of monument for corner and accessories established to perpetuate locating the position of the corner:

E-9

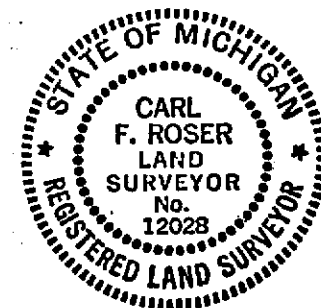
E-8

E-8 (CONT)

E-8 (CONT)

DROVE 5/8"x 3/4" REROD W/RLS CAP.  
 4" R.PINE N60°E 43.57'  
 6" B.OAK S40°E 69.85'  
 POWER POLE S15°E 81.45'  
 6" W.BIRCH S60°N 66.78'  
 SET CEDAR POST WITH LOC. TAG. WEST 50'

DROVE 5/8"x 3/4" REROD W/RLS CAP.  
 3" ELM N30°N 63.96'  
 3"S.PINE N35°E 66.4'  
 POWER POLE (HEAD ON FD 3/8"x 3/8" BOAT SPK.) N60°E 37.19'  
 2" MAPLE S55°E 40.87'  
 Set Cedar Post with Loc. Tag West 33'



Signed by Carl F. Roser 12-14-90 Date \_\_\_\_\_  
 Surveyor's Michigan License No. 12028