

SURVEY & REMONUMENTATION

DEC 02 1993

RC 1092

COMMISSION

LAND CORNER RECORDATION CERTIFICATE
Filing Requirement of Act 74, Mich. P.A. 1970

LI 26951 PA 713

For corners in

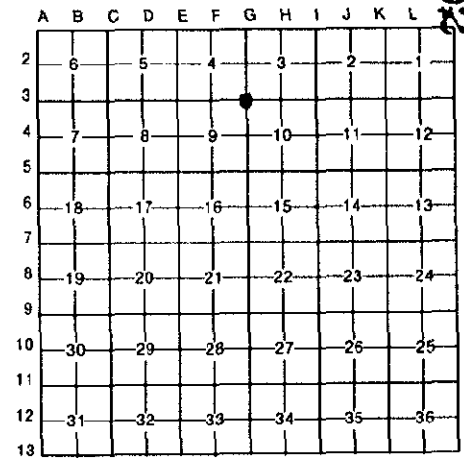
Wayne (County)	Located In:	Corner Code #
1. Public Land Survey	T <u>5S</u> R <u>10E</u>	<u>G-3</u>
	T _____ R _____	_____
	T _____ R _____	_____
	T _____ R _____	_____
2. Property Controlling in Section	S _____ T _____ R _____	_____
	S _____ T _____ R _____	_____
3. Miscellaneous Property in Sec.	S _____ T _____ R _____	_____
	S _____ T _____ R _____	_____
4. Lot No. _____, Recorded Plat _____		
5. Private Claims _____		

Compliance with
ACT 345, P.A. 1990
APPROVED ON: 10-28-93
WAYNE COUNTY REMONUMENTATION
PEER GROUP COMMITTEE

Register of Deeds Stamp & File Number

RC 1092

I, Bruce Antcliff, in a field survey on August 25, 19 93, do hereby certify that under requirements of P.A. 74, Michigan P.A. of 1970, the corner points mentioned in lines 1 and 2 above were in conformance with regulations and rules therefore as required in the current manual of survey instructions of the United States Department of the Interior, Bureau of Land Management or by a decree of a Court of Law and/or that the corner points mentioned in lines 3, 4 and 5 above were in conformance with the rules of the Michigan Board of Land Surveyors or by a Decree of a Court of Law; established, re-established, monumented, re-monumented, recovered, found as expressed below:



NOTE: Not more than 4 corners, all in the same town and range, may be recorded on this certificate.

A. Description of original monument and accessories and/or subsequent restoration:

- GLO-Post
- WPA (1930's) - Stone & Plug
- LCRC (1973) - 1/2" Rod in Handhole (L 18598, P 145)

B. Description of corner evidence found and/or method applied in restoring or reestablishing corner:

- 1/2" Rod in Box/Cover Cracked; measured to E1/4 S.4 & S1/4 S.4 - Distances checked well with WPA Surveys

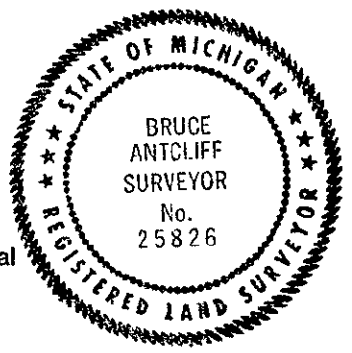
NOV 10 PM 2 15
FORRESTAL & NEAL
REGISTERED PROFESSIONAL SURVEYORS
ANN ARBOR, MICHIGAN

C. Description of monument for corner and accessories established to perpetuate locating the position of the corner:

- Set 4" x 36" Conc. Mon. with Wayne County Remonumentation Marker and Cap #25826.

- Witnesses
- WCRC Nail & Tag NW'ly side P.P., NE, 30.39'
 - P.K. Nail E. Side L.P. (3.5'± off ground), SE, 91.68'
 - Nail W. side Tree, S., 56.43'
 - Top Cen. Fire Hydrant, NW, 61.56'

The selected location is accepted by the Contractor and is generally accepted by professional surveyors as the best available evidence of the position of the original corner.



Signed by Bruce Antcliff Date 11-10-93
Surveyor's Michigan License No. 25826

25
11/12