

**SURVEY & REMONUMENTATION**

**RC 1618**

APR 25 1995

**COMMISSION**

**LAND CORNER RECORDATION CERTIFICATE**  
Filing Requirement of Act 74, Mich. P.A. 1970

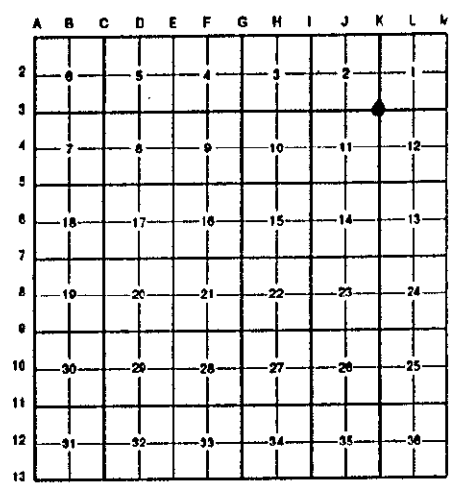
**L127800PA685**

For corners in

<u>WAYNE</u> (County)	Located in: Brownstown Township	Corner Code # _____
1. Public Land Survey	T <u>5S</u> R <u>10E</u> _____ T _____ R _____ T _____ R _____ T _____ R _____	<u>K-3</u> _____ _____ _____
2. Property Controlling In Section	S _____ T _____ R _____ S _____ T _____ R _____	_____ _____
3. Miscellaneous Property in Sec.	S _____ T _____ R _____ S _____ T _____ R _____	_____ _____
4. Lot No. _____, Recorded Plat _____		
5. Private Claims _____		

Compliance with  
ACT 345, P.A. 1990  
APPROVED ON: 12-7-94 *DRJ*  
WAYNE COUNTY REMONUMENTATION  
PEER GROUP COMMITTEE  
Register of Deeds Stamp & File Number

I, Randy Kolehouse, in a field survey on October 12 19 94, do hereby certify that under requirements of P.A. 74 Michigan P.A. of 1970, the corner points mentioned in lines 1 and 2 above were in conformance with regulations and rules therefore as required in the current manual of survey Instructions of the United States Department of the Interior, Bureau of Land Management or by a decree of a Court of Law and/or that the corner points mentioned in lines 3, 4 and 5 above were in conformance with the rules of the Michigan Board of Land Surveyors or by a Decree of a Court of Law; established, re-established, monumented, re-monumented, recovered, found as expressed below:



**NOTE:** Not more than 4 corners, all in the same town and range, may be recorded on this certificate.

**A. Description of original monument and accessories and/or subsequent restoration:**

K-3	1817	G.L.O. Notes	N/A	Post	\$ 13.00 MISCELLANEOUS RECORDING
	1930's	WPA Notes	N/A	12" Boat Spike	28 DEC 94 9:43 A.M. RECEIPT# 160
	1973	Cert. Survey L. 18673 P. 930	Arthurs	N/A	RECORDED
	1974	Cert. Survey L. 18731 P. 165	Arthurs	N/A	FOREST E. YOUNGBLOOD, REGISTER OF DEEDS
	1974	Cert. Survey L. 18994 P. 913	Arthurs	N/A	WAYNE COUNTY, MI
	1977	Cert. Survey L. 19858 P. 357	Stanley	N/A	
	1981	Cert. Survey L. 21171 P. 504	Beaupied	2" Iron Pipe	

**B. Description of corner evidence found and/or method applied in restoring or reestablishing corner:**

K-3 I found a 2" dia. pipe just West of a newer fence running N-S on a line of old fence and posts running to the West. This agrees with the following.

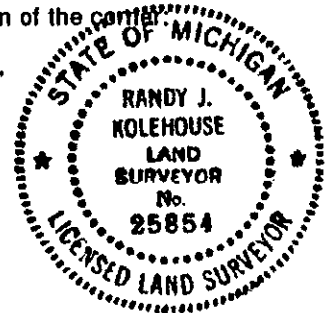
Cert. Survey L. 21171 P. 504  
Nail NW Face 8" Ash 9.82'  
Dist. from C/L of River Road (W. Jefferson) 859.01'

Measures West to monument in box at C/L of W. Jefferson = 859.02' (WPA & CS #1734 = 859.01')  
Measures West to J-3 = 2646.62' (G.L.O. = 2653.20') (WPA = 2647.81')

**C. Description of monument for corner and accessories established to perpetuate locating the position of the corner:**

K-3 I replaced the 2" pipe with a 4" x 36" conc. monument with aluminum cap stamped "Wayne Co. Remon."

Nail NW Face 8" Ash N 42° E 9.93'  
P.K. W Face 8" Oak S 25° E 23.70'  
P.K. E. Face 10" Oak S 07° W 42.90'  
P.K. S Face 12" Ash S 70° W 13.22'  
P.K. W Face 12" Walnut N 15° W 20.53'



The selected location is accepted by the Contractor and is generally accepted by professional surveyors as the best available evidence of the position of the original corner.

Signed by Randy J. Kolehouse Date 12/14/94  
Surveyor's Michigan License No. 25854

2R  
110  
MIS