

SURVEY & REMONUMENTATION

APR 25 1995

RC 1619

COMMISSION

LAND CORNER RECORDATION CERTIFICATE
Filing Requirement of Act 74, Mich. P.A. 1970

L127800PA686

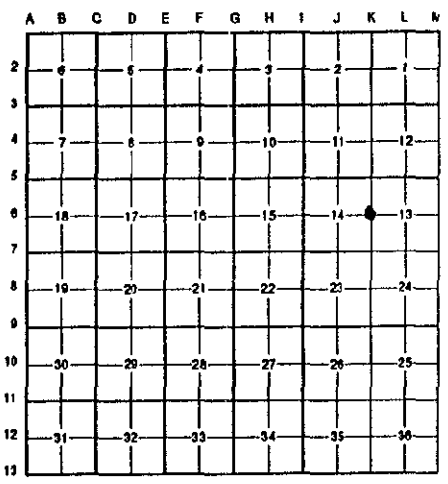
For corners in

<u>WAYNE</u> (County)	Located in: <u>Brownstown</u> Township	Corner Code # <u>K-6</u>
1. Public Land Survey	T <u>5S</u> R <u>10E</u>	<u>K-6</u>
	T _____ R _____	_____
	T _____ R _____	_____
	T _____ R _____	_____
2. Property Controlling In Section	S _____ T _____ R _____	_____
	S _____ T _____ R _____	_____
3. Miscellaneous Property In Sec.	S _____ T _____ R _____	_____
	S _____ T _____ R _____	_____

Compliance with ACT 345, P.A. 1990
APPROVED ON: 12-7-94 *DRJ*
WAYNE COUNTY REMONUMENTATION PEER GROUP COMMITTEE
Register of Deeds Stamp & File Number

RC 1619

4. Lot No. _____, Recorded Plat _____
5. Private Claims _____



I, Randy Kolehouse, in a field survey on October 12 19 94, do hereby certify that under requirements of P.A. 74 Michigan P.A. of 1970, the corner points mentioned in lines 1 and 2 above were in conformance with regulations and rules therefore as required in the current manual of survey instructions of the United States Department of the Interior, Bureau of Land Management or by a decree of a Court of Law and/or that the corner points mentioned in lines 3, 4 and 5 above were in conformance with the rules of the Michigan Board of Land Surveyors or by a Decree of a Court of Law; established, re-established, monumented, re-monumented, recovered, found as expressed below:

NOTE: Not more than 4 corners, all in the same town and range, may be recorded on this certificate.

A. Description of original monument and accessories and/or subsequent restoration:

K-6	1817	G.L.O. Notes	N/A	Post
	1930's	WPA Notes	N/A	N/A
	1976	Cert. Survey L. 19449 P. 95	Jerome	N/A

\$ 13.00 MISCELLANEOUS RECORDING
28 DEC 94 9:43 A.M. RECEIPT # 148
RECORDED
FOREST E. YOUNGBLOOD, REGISTER OF DEEDS
WAYNE COUNTY, MI

B. Description of corner evidence found and/or method applied in restoring or reestablishing corner:

K-6 I found a 1/2" pipe at fence corner, fence running N & E, on line of a very old fence line running to the West. There are no recorded witnesses for this point. However, it does agree with distances for WPA and the Cert. Survey L. 19449 P. 95.

Measures North to K-5 = 2629.45' (G.L.O. = 2640') (WPA = 2629.08')
Measures South to a point on the C/L of Lee Road at the West line of P.C. 636 = 2629.45'
Measures West to the C/L of River Road (W. Jefferson) = 1849.20' (WPA = 1849.43') (CS = 1849.10')

C. Description of monument for corner and accessories established to perpetuate locating the position of the corner:

K-6 Replaced 1/2" pipe with 4" x 36" concrete monument with aluminum cap stamped "Wayne Co. Remon."

- Nail w/Tag "WCR" 10" Dia. Fence Post North 0.49'
- P.K. SE Face 13" Oak N 32° E 21.64'
- Nail w/Tag "WCR" Set Over Swallowed Nail S Face 8" Oak N 73° E 32.14'
- Nail w/Tag "WCR" Set Over Swallowed Nail N Face 10" Hickory S 59° W 14.15'
- Nail w/Tag "WCR" NE Face 15" Ash N 50° W 32.04'



The selected location is accepted by the Contractor and is generally accepted by professional surveyors as the best available evidence of the position of the original corner.

Signed by Randy J. Kolehouse Date 12/14/94
Surveyor's Michigan License No. 25854