

MAR 9 2000

SECTION

LAND CORNER RECORDATION CERTIFICATE
Filing Requirement of Act 74, Mich. P.A., 1970

For corners in MONROE (58)

Form with fields for Located In: DUNDEE TWP., Corner Code #: M-6, and numbered items 1-5.

Vertical stamp: REGISTER OF DEEDS, MONROE COUNTY, MICH.

RECEIVED FOR RECORD
99 AUG -2 AM 10:46

Register of Deeds Stamp & File Number

(NOTE - Used & Accepted as Common to A-6, T6S, R7E)

1998 & 1999 Remonumentation Program Corner

I, George B. Warnke, Jr., in a field survey on 1998 - 1999 do hereby state that under requirements of P.A. 74, Michigan P.A. of 1970, the corner points mentioned in lines 1 and 2 above were in conformance with regulations and rules therefore as required in the current manual of survey instructions of the United States Department of the Interior, Bureau of Land Management or by decree of a Court of Law and / or that the corner points mentioned in lines 3, 4 and 5 above were in conformance with the rules of the Michigan Board of Land Surveyors or by a Decree of a Court of Law; established, re-established, monumented, recovered, found as expressed below.

NOTE: Not more than 2 corners, all in the same town and range, may be recorded on this certificate.

A. Description of original monument and accessories and/or subsequent restoration:

- 1819, GLO, Joseph Fletcher - (T6S, R6E Info) set the 1/4 sec. Post from which a Sycamore 18 ins. dia. bears South 30 lks. dis. & a B. Ash 12 ins. dia. bears N9E 20 lks. dis.
1906, C.A. Raker, Surveyor, Duncan's Addition to the Village of Dundee, Liber 1 of plats, Page 43 - commences at Quarter post between Sections 18 & 13, Town 6 South, Ranges 7 & 6 East respectively - (corner material not noted)
1957, O.A. Case, Surveyor, Assessor's Plat of McMullens Addition to the Village of Dundee, Liber 11 of plats, Page 19 - Commences 263.8' S89°52'E from the West 1/4 corner of Section 18, T6S, R7E (same measurement to NE corner of Duncan's Addition) (corner material not noted)
1965?, Surveyor?, McMullens 2nd Addition to the Village of Dundee, Liber 13 of plats, Page 29 - Commences S89deg52'E 613.30' from West 1/4 corner of Section 18, T6S, R7E (to the NE corner of McMullens Addition) (corner material not noted)
? , Surveyor? Notes (showing Duncan's Addition outline)- Oak Quarter Post centerline McBride Ave. Stone Underneath (M-6, T6S, R6E &/or A-6, T6S, R7E) - witnesses: SE'ly 27.85' Nail in P.P. pole & SW'ly 26.94' Spk in Maple Tr. & SW'ly 35.58' Spk in Maple Tr.
1990's?, G.B. Warnke notes - set (temporarily until excavation) P.K. nail & washer - East 1/4 corner Sec. 13, T6S, R6E - witnesses: SE'ly 27.85' set nail & shiner in N.W. face of P.P. Pole & SW'ly 26.94' set nail & shiner in W'ly face per dist. 15" Maple SW'ly 58.21' N.E. corner of H.N. 380 & SW'ly 35.58' set nail & shiner in E'ly face per dist. 13" Maple SW'ly 79.37' N.W. corner of H.N. 380 & North 83.87' SE attached garage corner
1990, G.B. Warnke, Surveyor, Geiman Estates, Liber 15 of plats, Page 63 - Commences S89deg52'00" East 263.80' from West 1/4 corner of Sec 18, T6S, R7E (to the NW cor. of McMullens Addition)
1990's, David Arthur Consultants - A-6 - West 1/4 cor. Section 18, T6S, R7E - FD NAIL/WASHER (1/1996 - G.B. Warnke sent note to David Arthur Consultants informing them that their FD NAIL/WASHER was probably the point we temporarily set until we could excavate.)

Grid table with columns A-M and rows 1-13, containing numbers 1-36.

B. Description of corner evidence found and/or method applied in restoring or re-establishing corner:

12/5/97 - G.B. Warnke crew (TWC) found PK/washer at surface - dug 24" x 24" hole - found brick at 8" deep at 0.35' north & 0.10' west of PK/washer - found a 1" diameter granite stone 18" deep with high point at 0.35' north & 0.10' west of PK/washer - also found remains of wood to the south of stone along side - set 1" x 36" pipe in monument box in place of stone & brick and placed stone & brick to north & south of pipe and witnessed as shown below.

NOTE: The distance between M-5, T6S, R6E (LCRC, L4, P77) to M-6/A-6 is 2645.23 feet.
The distance between M-7, T6S, R6E (LCRC, L4, P194) to M-6/A-6 is 2707.00 feet.
A-5, T6S, R7E (Remon'd LCRC, L4, P81) is 34.59 feet north of M-5 & 2679.82 feet to M-6/A-6.
A-7, T6S, R7E (PK nail fd 12/3/97 by GBW based on other surveyors info in area) is 55.59 feet north of M-7 & 2651.41 feet to M-6/A-6.
Per G.L.O. notes, the distance between corners was 40 chains (2640 feet).
By accepted practice, A-6 should be 1/2 the distance between the section corners, which would be 14.2 feet north of the stone.
4/5/99 - set brass remonumentation cap on previously set 1" x 36" pipe in monument box

RATIFIED BY PEER GROUP, PA 345 OF 1990, MONROE COUNTY, MICHIGAN, DATE 9/8/1998, COUNTY REP.

REMONUMENTATION: Set 1" x 36" pipe with brass remonumentation cap in monument box with stone & brick to north & south of pipe and is accepted as the best available evidence of the position of the original corner.

C. Description of monument for corner and accessories established to perpetuate locating the position of the corner:

Set 1" x 36" Pipe with brass remonumentation cap in monument box with stone & brick to north & south of pipe & Witnesses:
South 03° West 27.37 feet to found nail /shiner west face 18" Maple & South 40° West 35.90 feet to found nail/shiner east face 16" Maple
South 40° East 28.06 feet to set new nail/ remon. shiner in northeast face of guy pole
North 05° East 83.48 feet to S.E. corner of res'd #455 McBride & South 15° West 58.60 feet to N.E. corner of residence #380 Midway

Signed by [Signature]
Surveyor's Michigan License No. 19474

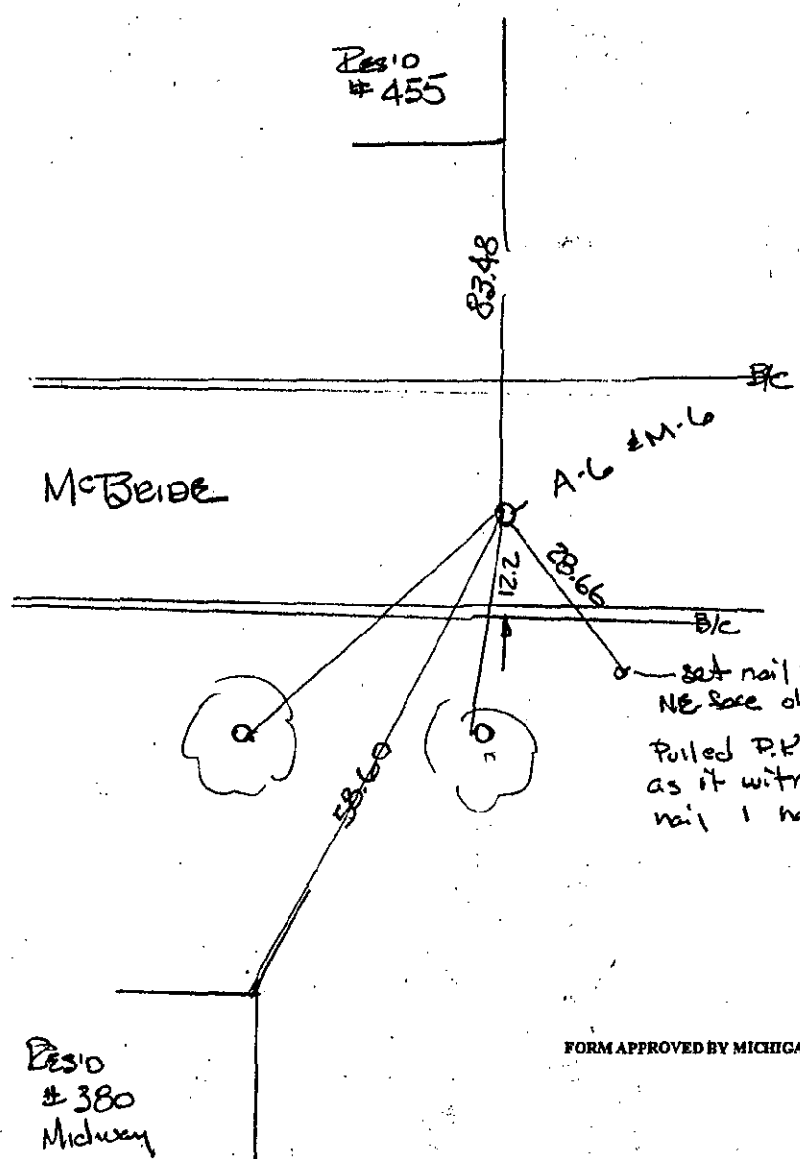


Date May 12, 1999

REWEY & N

MAR 19 2000

SECTION



set nail & remain disc.
 NE face old guy pole
 Pulled P.K. nail out of N. face of pole
 as it witnessed to temporary P.K.
 nail I had set

FORM APPROVED BY MICHIGAN STATE BOARD OF LAND SURVEYORS, JAN. 28, 1971
 REVISED MAY 14, 1975
 REVISED JAN., 1983
 REVISED OCT., 1994

⑩ M-L, TUS, RUE, DUNOEE

LIBER 4 PAGE 460