

**SURVEY &
REMONUMENTATION**

DEC 07 1994

**COMMISSION
LAND CORNER RECORDATION CERTIFICATE
Filing Requirement of Act 74, Mich. P.A. 1970**

RECEIVED FOR RECORD

94 OCT 12 PM 2:16

RATIFIED BY PEER GROUP
PA 345 OF 1990
MONROE COUNTY, MICHIGAN

date: Oct 26, 1993

County Rep. [Signature]

For corners in

<u>MONROE</u> (County)	Located in:	Corner Code #
	<u>BEDFORD TWP.</u>	
1. Public Land Survey	T <u>8</u> S R <u>7E</u>	<u>G-5</u>
	T _____ R _____	_____
	T _____ R _____	_____
	T _____ R _____	_____
2. Property Controlling in Section	S _____ T _____ R _____	_____
	S _____ T _____ R _____	_____
3. Miscellaneous Property in Sec.	S _____ T _____ R _____	_____
	S _____ T _____ R _____	_____

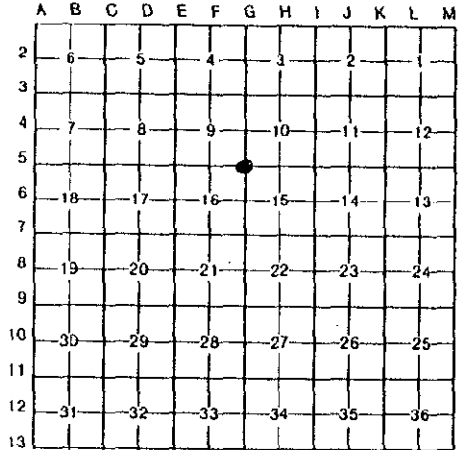
[Signature]
REGISTER OF DEEDS
MONROE COUNTY, MICH

Register of Deeds Stamp & File Number

4. Lot No. _____, Recorded Plat _____

5. Private Claims _____
MONROE COUNTY REMONUMENTATION PROGRAM Peer Group
approved corner on 10-26-1993 per Act 345 of 1990.

I, G.B. WARNKE, JR., in a field survey on August 9, 1994, do hereby certify that under requirements of P.A. 74, Michigan P.A. of 1970, the corner points mentioned in lines 1 and 2 above were in conformance with regulations and rules therefore as required in the current manual of survey instructions of the United States Department of the Interior, Bureau of Land Management or by a decree of a Court of Law and/or that the corner points mentioned in lines 3, 4 and 5 above were in conformance with the rules of the Michigan Board of Land Surveyors or by a Decree of a Court of Law; established, re-established, monumented, re-monumented, recovered, found as expressed below:



NOTE: Not more than 4 corners, all in the same town and range, may be recorded on this certificate.

A. Description of original monument and accessories and/or subsequent restoration:
G-5, T8S, R7E, Corner Common to Sections 9, 10, 15 & 16
(At Jackman Road & Erie Road)
G.L.O. Surveyor Joseph Wampler set post at Sections 9, 10, 15 & 16. Witnesses: W. Oak 11 inch S.85°E. 18 links, W. Oak 12 inch N.77°W. 3 links. / No old records found. / A.J. Marino in August of 1955 found stone and witnessed. / M.R. Fleck in March of 1971 and December of 1972 notes P.K. nail and stone. / G.B. Warnke in September of 1985 notes iron pin over stone. / Re-witnessed in September of 1993 to 1/2 inch iron rod over stone.

B. Description of corner evidence found and/or method applied in restoring or reestablishing corner:
G-5 - 9/13/1993, found 1/2 inch iron rod 3 inches deep and set nail with washer over rod and witnessed as shown below.
August of 1994 - Set 1 inch x 36 inch black iron ^{pipe} with remonumentation cap inside monument box to replace nail and washer over 1/2 inch iron rod. Witnesses are below.

C. Description of monument for corner and accessories established to perpetuate locating the position of the corner:
G-5 - Found 1/2 Inch Iron Rod 3 Inches Deep & Set Nail With Washer Over Rod and is accepted as a careful and faithful perpetuation of the position of the original corner and replaced with 1" x 36" black iron ^{pipe} with remonumentation cap inside monument box - witnesses:
South 45° West 44.81' found P.K. nail in north face of utility pole
South 45° East 44.20' found P.K. nail in west face of utility pole
North 45° East 44.19' found P.K. nail in southwest face of guy pole
North 55° East 37.95' southwest face of gas vent pipe
North 15° East 115.36' set nail/shiner in west root of 18 inch tree

igned by [Signature]
urveyor's Michigan License No. 19474

Date August

