

RATIFIED BY PEER GROUP
PA 345 OF 1990
MONROE COUNTY, MICHIGAN

date: 10/26/1993
County Rep.: [Signature]
For corners in

LAND CORNER RECORDATION CERTIFICATE
Filing Requirement of Act 74, Mich. P.A. 1970

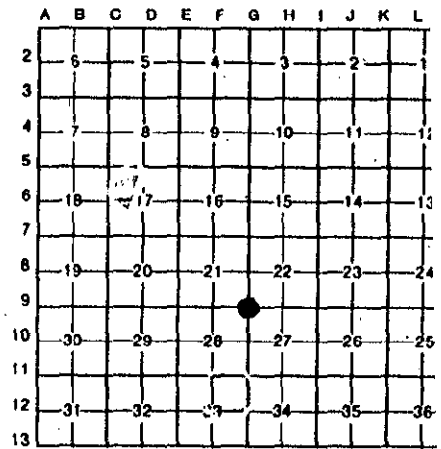
RECEIVED FOR RECORD
95 DEC 28 AM 9:07

<u>MONROE (58)</u> (County)	Located In:	Corner Code #
<u>Bedford Twp.</u>	<u>8S 7E</u>	<u>G-9</u>
1. Public Land Survey	T _____ R _____	_____
	T _____ R _____	_____
	T _____ R _____	_____
	T _____ R _____	_____
2. Property Controlling in Section	S _____ T _____ R _____	<u>SURVEY & REMONUMENTATION</u>
	S _____ T _____ R _____	_____
3. Miscellaneous Property in Sec.	S _____ T _____ R _____	_____
	S _____ T _____ R _____	_____

Register of Deeds Stamp & File Number

APR 04 1996

4. Lot No. _____, Recorded Plat _____
5. Private Claims COMMISSION
1993 REMONUMENTATION PROGRAM
Peer Group approved on 10/26/1993 per Act 345 of 1990



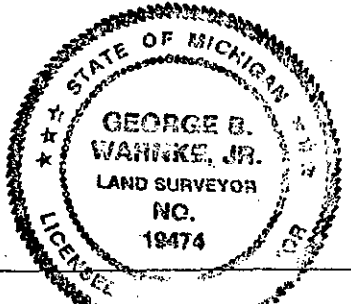
I, G.B. WARNKE, JR., in a field survey on 9/29/1995, 19 _____, do hereby certify that under requirements of P.A. 74, Michigan P.A. of 1970, the corner points mentioned in lines 1 and 2 above were in conformance with regulations and rules therefore as required in the current manual of survey instructions of the United States Department of the Interior, Bureau of Land Management or by a decree of a Court of Law and/or that the corner points mentioned in lines 3, 4 and 5 above were in conformance with the rules of the Michigan Board of Land Surveyors or by a Decree of a Court of Law; established, re-established, monumented, re-monumented, recovered, found as expressed below:

NOTE: Not more than 4 corners, all in the same town and range, may be recorded on this certificate.

A. Description of original monument and accessories and/or subsequent restoration:
G-9, T8S, R7E, Corner Common to Sections 21, 22, 27 & 28 (At Jackman & Dean Roads)
G.L.O. Surveyor Joseph Wampler set post for Sections 21, 22, 27 & 28. Witnesses: W. Oak 26 inch N.30°W. 117 links, W. Oak 30 inch S.17°E. 101 links. / Old corner notes unknown. / M.R. Fleck in 1959 & 1961 notes stone & railroad spike. / G.B. Warnke, December of 1975, notes found iron pin over line stone. as recorded in L.C.R.C., Liber 2, Pages 128-129. / G.B. Warnke, September of 1993, notes bolt over stone and new witnesses.

B. Description of corner evidence found and/or method applied in restoring or reestablishing corner:
G-9 - 9/21/1993, found 1 inch square head bolt over stone and witnessed as shown below.
1995 - M.C.R.C. crew found bolt over stone over wood post & set iron & monument box.
9/29/95 G.B. Warnke crew set 1 inch X 36 inch and brass cap over iron set by M.C.R.C.
(M.C.R.C. iron was not in condition to allow placement of brass cap.)

C. Description of monument for corner and accessories established to perpetuate localing the position of the corner:
G-9 - Set Brass remonumentation cap on 1 inch X 36 inch iron pipe inside monument box to replace found 1 inch square head bolt and is accepted as the best available evidence of the position of the original corner and witnesses:
North 40° East 52.89' found nail/tag (Finkbeiner, Pettis & Strout) in southwest face of utility pole
South 45° East 51.55' found nail/tag (F.P.&S.) in northwest face of utility pole
South 45° West 48.44' found nail/tag (F.P.&S.) in northeast face of utility pole
North 35° West 74.53' found nail/tag (F.P.&S.) in southeast face of telephone pole



Signed by [Signature] Date 9/29/1995
Surveyor's Michigan License No. 19474

FORM APPROVED BY MICHIGAN STATE BOARD OF LAND SURVEYORS, JAN. 28, 1971
REVISED MAY 14, 1975
REVISED JAN., 1983

(17) G-9, T8S, R7E, BEDFORD TWP. W 1/4 34