

SURVEY & REMONUMENTATION

APR 28 1995

COMMISSION

RATIFIED BY PEER GROUP PA 345 OF 1990 MONROE COUNTY, MICHIGAN

RECEIVED FOR RECORD

94 DEC 29 AM 11:08

LAND CORNER RECORDATION CERTIFICATE

Filing Requirement of Act 74, Mich. P.A. 1970

date: 11/8/1993 County Rep.: [Signature]

Table with columns: MONROE (County), Located In: BEDFORD TWP., Corner Code #, and rows for Public Land Survey, Property Controlling in Section, and Miscellaneous Property in Sec.

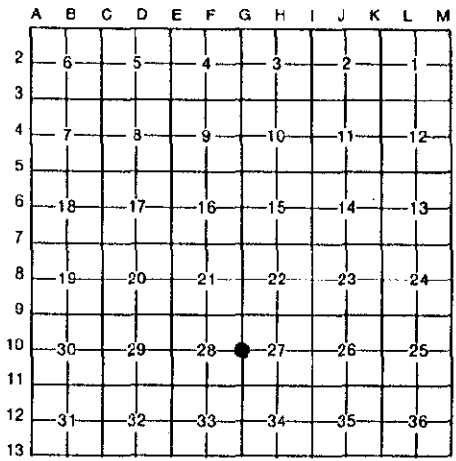
Heri Allen REGISTER OF DEEDS MONROE COUNTY, MICH

Register of Deeds Stamp & File Number

- 4. Lot No. Recorded Plat
5. Private Claims

MONROE COUNTY REMONUMENTATION PROGRAM Peer Group approved corner on 11/08/1993 per Act 345 of 1990.

I, G.B. WARNKE, JR., in a field survey on September 2, 1994 do hereby certify that under requirements of P.A. 74, Michigan P.A. of 1970, the corner points mentioned in lines 1 and 2 above were in conformance with regulations and rules therefore as required in the current manual of survey instructions of the United States Department of the Interior, Bureau of Land Management or by a decree of a Court of Law and/or that the corner points mentioned in lines 3, 4 and 5 above were in conformance with the rules of the Michigan Board of Land Surveyors or by a Decree of a Court of Law; established, re-established, monumented, re-monumented, recovered, found as expressed below.



NOTE: Not more than 4 corners, all in the same town and range, may be recorded on this certificate.

A. Description of original monument and accessories and/or subsequent restoration:

G-10, T8S, R7E, 1/4 Corner Between Sections 27 & 28 (On Jackman Road - 1/2 Mile South of Dean Road)

In 1820, G.L.O. Surveyor Joseph Wampler set 1/4 post between Sections 27 & 28. Witnesses: W. Oak 46 inch N.8°E. 36 links, Poplar 24 inch S.31°E. 52 links. / Old corner notes unknown. / This corner controls: Southwest corner of Enchanted Forest, Liber 12, Page 27, & Southeast corner of Libery Acres, Liber 7, Page 33, & Northwest corner of Roffman Heights, Liber 10, Page 4. / M.R. Fleck in January of 1961 notes stone. / A.J. Marino in August of 1954 notes stone 33 feet east of plat monument of Liberty Acres. / G.B. Warnke in December of 1975 notes railroad spike over 1/2 inch iron pin recorded in L.C.R.C., Liber 2, Pages 128 & 129. / G.B. Warnke in September of 1993 notes new witnesses.

B. Description of corner evidence found and/or method applied in restoring or reestablishing corner:

G-10 - On 11/04/93, found railroad spike 1 inch below surface and found 1/2 inch by 16 inch iron rod (bent top - straight portion under railroad spike) 4 inches deep and dug 2 foot and probed 3 foot but found no further evidence. Placed monument box at surface with a 1 inch by 36 inch iron pipe in replacement of railroad spike and iron rod.

9/2/1994, placed 1/2 inch rebar with brass remonumentation cap inside existing 1 inch iron pipe.

C. Description of monument for corner and accessories established to perpetuate locating the position of the corner:

G-10 - 1 Inch by 36 Inch Iron Pipe Inside Monument Box and is accepted as the best available evidence of the position of the original corner and witnesses: North 85° East 31.05' found nail/shiner in south side of utility pole East 32.98' 4 inch square concrete monument South 85° West 31.45' found nail/tag (Finkbeiner, Pettis & Strout) in north face of utility pole West 32.73' found concrete monument North 60° West 120.20' southeast corner of foundation of house No. 7819

9/2/1994, placed 1/2 inch rebar with brass remonumentation cap inside existing 1 inch iron pipe.

Signed by [Signature] Date September 2, 1994 Surveyor's Michigan License No. 19474

