

# SURVEY & REMONUMENTATION

APR 28 1995

RATIFIED BY PEER GROUP  
PA 345 OF 1990  
MONROE COUNTY, MICHIGAN

## COMMISSION LAND CORNER RECORDATION CERTIFICATE Filing Requirement of Act 74, Mich. P.A. 1970

RECEIVED FOR RECORD

94 DEC 29 AM 11:09

date: 10/4/1994  
County Rep.: [Signature]

For corners in

MONROE <small>(County)</small>	Located In: BEDFORD TWP.	Corner Code #
1. Public Land Survey	T 8 S R 7 E	H-1
	T _____ R _____	_____
	T _____ R _____	_____
	T _____ R _____	_____
2. Property Controlling in Section	S _____ T _____ R _____	_____
	S _____ T _____ R _____	_____
3. Miscellaneous Property in Sec.	S _____ T _____ R _____	_____
	S _____ T _____ R _____	_____

*Peri Allen*  
REGISTER OF DEEDS  
MONROE COUNTY, MICH

Register of Deeds Stamp & File Number

4. Lot No. \_\_\_\_\_, Recorded Plat \_\_\_\_\_

5. Private Claims \_\_\_\_\_

1994 MONROE COUNTY REMONUMENTATION PROGRAM  
Peer Group approved on 10/4/94 per Act 345 of 1990.

I, G.B. WARNKE, JR., in a field survey on 12/6/1994, 19\_\_\_\_\_, do hereby certify that under requirements of P.A. 74, Michigan P.A. of 1970, the corner points mentioned in lines 1 and 2 above were in conformance with regulations and rules therefore as required in the current manual of survey instructions of the United States Department of the Interior, Bureau of Land Management or by a decree of a Court of Law and/or that the corner points mentioned in lines 3, 4 and 5 above were in conformance with the rules of the Michigan Board of Land Surveyors or by a Decree of a Court of Law; established, re-established, monumented, re-monumented, recovered, found as expressed below:

**NOTE: Not more than 4 corners, all in the same town and range, may be recorded on this certificate.**

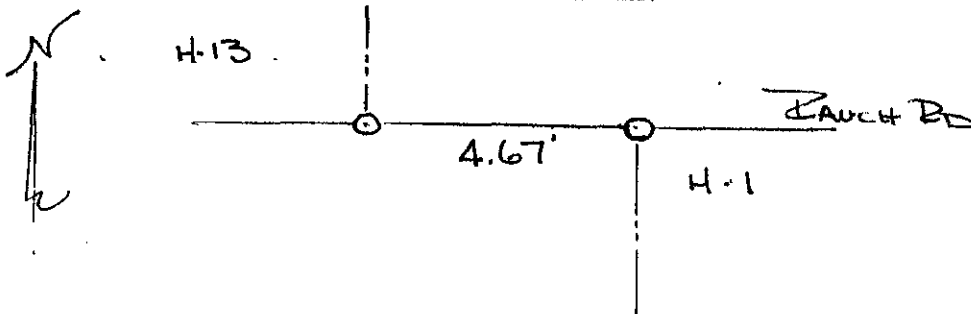
	A	B	C	D	E	F	G	H	I	J	K	L	M
2	6	5	4	3	2	1							
3													
4	7	8	9	10	11	12							
5													
6	18	17	16	15	14	13							
7													
8	19	20	21	22	23	24							
9													
10	30	29	28	27	26	25							
11													
12	31	32	33	34	35	36							
13													

A. Description of original monument and accessories and/or subsequent restoration:

H-1, T8S, R7E, Bedford Township, Monroe County - ID No. 58 North 1/4 Corner - Section 3 on Township Line (Rauch Road 1/2 mile east of Jackman Road - 2 inch tarby on 8 inch concrete)  
G.L.O. Surveyor Joseph Wampler surveyed T8S, R7E. North 1/4 corner of Section 3 would be set by private surveyors. No old notes for corner. 1975, M.R. Fleck ran straight line between G-13 and I-13 T7S, R7E splitting mile. 1976, G.B Warnke used same method and found stone at center of Section 34 (H-2), and set nail and shiner at H-13 T7S, R7E. Monroe County Road Commission road notes show no indication of corner. 1990, G.B. Warnke set railroad bolt, L.C.R.C. was not recorded.

B. Description of corner evidence found and/or method applied in restoring or reestablishing corner:

H-1 - Corner would be 4.67 feet east of H-13, T7S, R7E. 12/6/1994, set 1 inch x 36 inch iron pipe with brass remonumentation cap inside monument box on correction line.



C. Description of monument for corner and accessories established to perpetuate locating the position of the corner:

H-1 - Set 1 inch x 36 inch iron pipe with brass remonumentation cap inside monument box on correction line and this position was not established by original government surveyors and is accepted as the best available evidence of the position for the corner and witnesses:  
West 4.67 feet to H-13, T7S, R7E, brass remon. cap in 1 inch x 36 inch iron pipe inside monument box  
North 20° East 23.90 feet to set double headed nail/shiner in west face of telephone pole  
North 30° West 17.54 feet to east end of 2 inch concrete culvert.  
South 45° West 43.18 feet to found nail/coin in east face of electric pole  
South 75° East 149.53 feet to found double headed nail/shiner in north face of electric pole  
South 7.0 feet +/- to centerline of road pavement

Signed by [Signature] Date 12/6/1994

Surveyor's Michigan License No. 19474

FORM APPROVED BY MICHIGAN STATE BOARD OF LAND SURVEYORS, JAN. 28, 1973, REVISED, MAY 14, 1975, REVISED, JAN., 1983

