

SURVEY &
REMONUMENTATION

MAY 07 1997

COMMISSION

MONTCALM COUNTY REMONUMENTATION
LAND CORNER RECORDATION CERTIFICATE
Filing Requirement of Act 74, Mich. P.A. 1970

For corners in
Montcalm
(County)

Located In: Crystal Township

Corner Code #

1. Public Land Survey Sec. 3& T 10 N R 5 W G-1
4 T _____ R _____
T _____ R _____
T _____ R _____

2. Property Controlling S _____ T _____ R _____
in Section S _____ T _____ R _____

3. Miscellaneous S _____ T _____ R _____
Property in Sec. S _____ T _____ R _____

4. Lot No. _____, Recorded Plat _____

5. Private Claims _____

STATE OF MICHIGAN
MONTCALM COUNTY
RECORDED

11/14/1996 4:02:42 PM

VIRGINIA L. KNEPPER
REGISTER OF DEEDS

Register of Deeds Stamp & File Number

I, William Tingley a field survey on March 24, 1995, do hereby certify that under requirements of P.A. 74, Michigan P.A. of 1970, the corner points mentioned in lines 1 and 2 above were in conformance with regulations and rules therefore as required in the current manual of survey instructions of the United States Department of the Interior, Bureau of Land Management or by a decree of a Court of Law and/or that the corner points mentioned in lines 3, 4 and 5 above were in conformance with the rules of the Michigan Board of Land Surveyors or by a Decree of a Court of Law; established, re-established, monumented, re-monumented, recovered, found as expressed below:

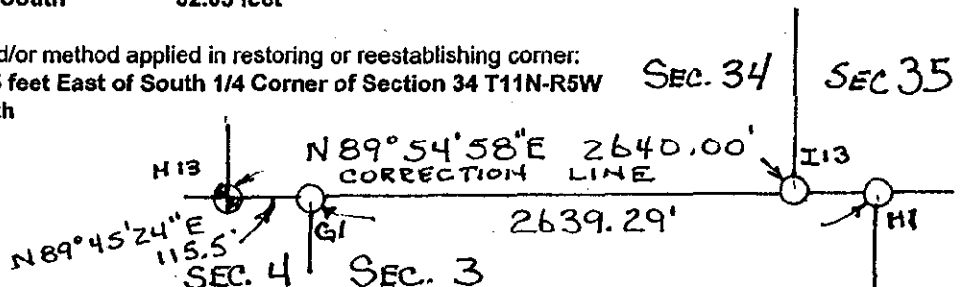
NOTE: Not more than 4 corners, all in the same town and range, may be recorded on this certificate.

A. Description of original monument and accessories and/or subsequent restoration:

September 28, 1831, Orange Risdon, GLO Notes
Intersected North Boundary 1 chain 73 links
East of 1/4 Post (Township to North)
Set Post
Beech 14" S58°E 69 links
Beech 16" S63°W 64 links
July 1, 1925, Michigan State Highway Dept., M-43, Project 11
No calls for corners
February 23, 1990, W.G. Tingley, #30104
Set Railroad Spike, prorated GLO distance between corners I-1 T10N R5W to East and F-1 T10N R5W G-13 T11N R5W to West
1" Iron Pipe (S1/4 34 T11N R5W) West 115.5 feet
Southeast Corner House #9507 N3°E 110.9 feet
4" Steel Post South 32.05 feet

B. Description of corner evidence found and/or method applied in restoring or reestablishing corner:

Found Railroad Spike set previously 115.5 feet East of South 1/4 Corner of Section 34 T11N-R5W (GLO distance 114.18 feet) on fence South



C. Description of monument for corner and accessories established to perpetuate locating the position of the corner:

Set Remonumentation Corner in place of spike.

Remonumentation Corner	West	115.5 feet
Southeast Corner House #9507	N03°E	110.9 feet
4" Steel Post	South	31.00 feet
West end 14" Steel Pipe Drive Culbert	N10°E	25.1 feet
Southwest Corner Telephone Box	N65°E	75.2 feet

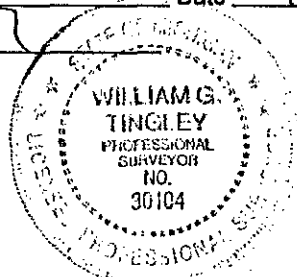
ACCEPTED BY THE MONTCALM COUNTY SURVEY PEER GROUP AS THE OFFICIAL CORNER UNDER MICHIGAN PUBLIC ACT 345 OF 1990 AT A MEETING HELD 10/8/96

William Tingley
William Tingley, PS, Chairman

This corner is accepted as a careful and faithful perpetuation of the position of the original corner.

Signed by William Tingley Date 10/8/96 1996

Surveyor's Michigan License No. 30104



FORM APPROVED BY MICHIGAN STATE BOARD OF LAND SURVEYORS, JAN. 28, 1977
REVISED MAY 14, 1976
REVISED JAN. 1983
ADAPTED FOR WORD PROCESSING MARCH, 1991