

MONTCALM COUNTY REMONUMENTATION PROGRAM

DEC 19 2000

LAND CORNER RECORDATION CERTIFICATE

Filing Requirement of Act 74, Mich. P.A. 1970

SECTION

For corners in

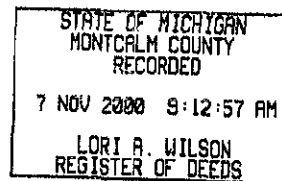
Montcalm
(County)

Located In:

Crystal Township

Corner Code #

- 1. Public Land Survey Sec. 25,36 T 10 N R 05 W M-11
 - T _____ R _____
 - T _____ R _____
 - T _____ R _____
- 2. Property Controlling in Section S _____ T _____ R _____
 - S _____ T _____ R _____
- 3. Miscellaneous Property in Sec. S _____ T _____ R _____
 - S _____ T _____ R _____



Register of Deeds Stamp & File Number

- 4. Lot No. _____, Recorded Plat _____
- 5. Private Claims _____

	A	B	C	D	E	F	G	H	I	J	K	L	M
1													
2	6	5	4	3	2	1							
3													
4	7	8	9	10	11	12							
5													
6	18	17	16	15	14	13							
7													
8	19	20	21	22	23	24							
9													
10	30	29	28	27	26	25							
11													
12	31	32	33	34	35	36							
13													

I, William G. Tingley, in a field survey on May 31, 2000, do hereby certify that under requirements of P.A. 74, Michigan P.A. of 1970, the corner points mentioned in lines 1 and 2 above were in conformance with regulations and rules therefore as required in the current manual of survey instructions of the United States Department of the Interior, Bureau of Land Management or by a decree of a Court of Law and/or that the corner points mentioned in lines 3, 4 and 5 above were in conformance with the rules of the Michigan Board of Land Surveyors or by a Decree of a Court of Law; established, re-established, monumented, re-monumented, recovered, found as expressed below:

NOTE: Not more than 2 corners, all in the same town and range, may be recorded on this certificate.

A. Description of original monument and accessories and/or subsequent restoration:

1. April 03, 1831, Robert Clark Jr., Deputy Surveyor, GLO notes, North on east boundary of section 36
Corner of Section 25 and 36 at 80.00 chains
Elm 15" corner

2. April 22, 1891, Edward H. Jones, County Surveyor, Book 2-A Page 8
NE corner

Maple 12" S65°W 123½ links (81.51 feet)
Elm 10" N18°W 125 links (82.50 feet)

ACCEPTED BY THE MONTCALM COUNTY SURVEY PEER GROUP AS THE OFFICIAL CORNER UNDER MICHIGAN PUBLIC ACT 345 OF 1990 AT A MEETING HELD 10/11/00

WGT
William Tingley, PS, Chairman

3. June 20, 1988, Burt Wickham, Jr. # 17639, LCRC Liber 002 Page 223

Set rod and cap from 1891 survey by Ed H. Jones in section 36. Corner falls in C/L gravel road to south and west and 35 feet +/- south of C/L gravel road to east.

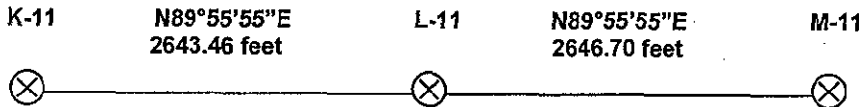
"X" cut top of e. edge
6" I-beam to g. rail S70°W 32.20 feet
Nail E/S ash 18" S25°W 82.42 feet
W. flange W/L sign P N00°E 46.27 feet



LIBER 4 PAGE 306

B. Description of corner evidence found and/or method applied in restoring or reestablishing corner:

Searched the apparent location of the corner. Found ash used by Wickham. The intersection was rebuilt approximately 2-3 years ago. Excavated 4.00 feet x 5.00 feet x 3.00 feet deep. Found no evidence and considered a lost corner. Corner was reestablished by extending the line east from the NW corner through the N ¼ corner and extending the line north from the SE corner through the E ¼ corner. Distance south to M-12 is 2640.54 feet and to M-13 is 5278.18 feet



C. Description of monument for corner and accessories established to perpetuate locating the position of the corner:

Set standard remonumentation pipe in line of K-11 and L-11, M-12, and M-13.

Stop sign N80°W 28.78 feet
S. leg road sign N45°W 58.58 feet
Stop sign N45°E 66.42 feet
T/C 6 foot CMP West 52.30 feet
Fnd Nail E/S Ash S25°W 80.50 feet



This corner is accepted as the careful and faithful reestablishment of the position of the original corner.

Bearings given are magnetic. Standard remonumentation pipe consists of a Berntsen stainless steel 2 3/8" x 30" pipe with a brass cap stamped "MONTCALM COUNTY REMONUMENTATION, P.S. # 30104"

Signed by William G. Tingley Date 10/11/00

Surveyor's Michigan License No. 30104