

STATE OF MICHIGAN  
DEPARTMENT  
OF  
NATURAL RESOURCES

LAND CORNER RECORD

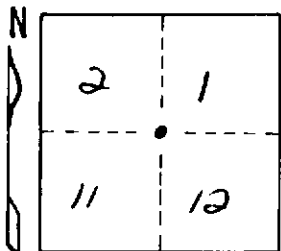
MONTCALM COUNTY  
T 10 N R 6 W

DESCRIPTION OF CORNER RECOVERED WELL POINT - 12" BELOW RD GRADE

CORNER MONUMENT SECTIONS 1-2-11 & 12

DATE MONUMENT PLACED AND WITNESSED FOUND AUG. 24, 1966

WITNESSES TO CORNER..... SPIKE & TAG 22" WALNUT N 65° W 69.8'



S.W. COR BR. ABUTE. (PALES RD) S 85° 30' E 126.4'

SPIKE & TAG POWER POLE S 51° E 40.8'

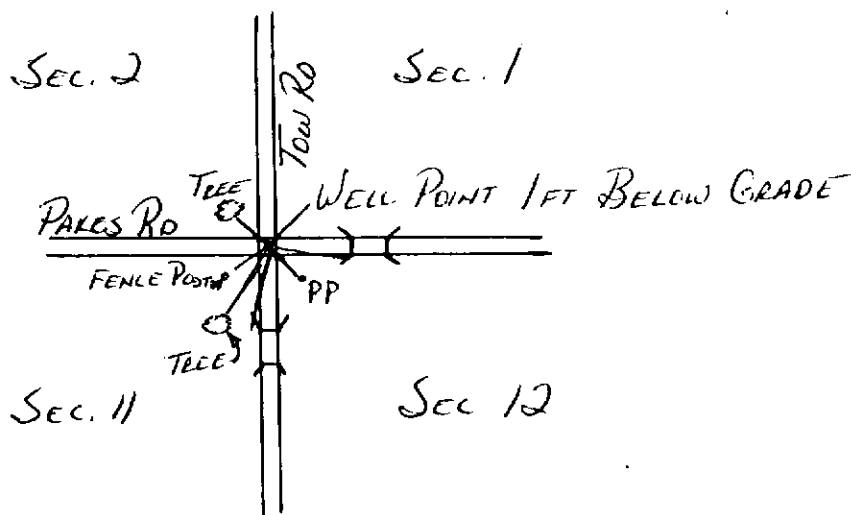
AND  
N.W. COR. BR. ABUTE S 1° W 106.5'

CIRCLE CORNER REGISTERED

SPIKE & TAG 30" WILLOW S 12° W 68.55'

DESCRIPTION IN DETAIL AS TO HOW CORNER WAS LOCATED AND IDENTIFIED OR RESTORED.

COR. FENCE POST S 39° W 40.2'



SURVEYOR'S SEAL

SIGNED

[Signature]  
REGISTERED LAND SURVEYOR

DATE

AUG. 24, 1966

DISTRIBUTION:

County Courthouse  
Area Forester (Regions I & II)  
District or Region Surveyor  
Forestry Div., Lansing