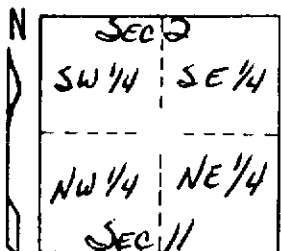


STATE OF MICHIGAN
DEPARTMENT
OF
NATURAL RESOURCES

LAND CORNER RECORD

MONTCALM COUNTY
T 10 N R 6 W

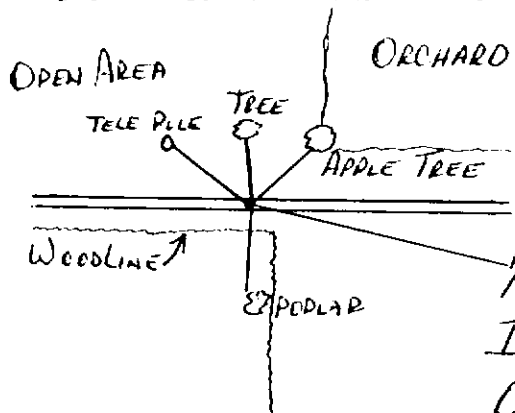
DESCRIPTION OF CORNER RECOVERED WELL POINT (TOP 12" BROKEN OFF) 3/4" IN CENTER 6" BELOW GRADE
CORNER MONUMENT 1/4 CORNER COMMON SEC. 2 & 11
DATE MONUMENT PLACED AND WITNESSED AUG 24, 1966
WITNESSES TO CORNER..... SPIKE & TAG TELEPHONE POLE N55°W 45.4'



SPIKE & TAG 4" MAPLE N17°W 63.0'
SPIKE & TAG CORNER APPLE TREE N12°E 41.4'
AND
SPIKE & TAG 14" POPLAR S0°W 37.3'

CIRCLE CORNER REGISTERED

DESCRIPTION IN DETAIL AS TO HOW CORNER WAS LOCATED AND IDENTIFIED OR RESTORED.



1/4 COR. WELL POINT WITH 3/4" PIPE PLACED
IN CENTER 1' OF WELL POINT BROKEN
OFF BY GRADER BLADE 6" BELOW GRADE.

SURVEYOR'S SEAL

SIGNED

[Signature]
REGISTERED LAND SURVEYOR

DATE

AUG 24, 1966

DISTRIBUTION:

County Courthouse
Area Forester (Regions I & II)
District or Region Surveyor
Forestry Div., Lansing

R 4047
Rev. 10/68