

SURVEY & REMONUMENTATION

SEP 12 1995

COMMISSION

MONTCALM COUNTY REMONUMENTATION PROGRAM

LAND CORNER RECORDATION CERTIFICATE

Filing Requirement of Act 74, Mich. P.A. 1970

For corners in Montcalm (County) Located In: _____ Corner Code # _____

1. Public Land Survey Sec. 36 T 11 R 7 L-13, S 1/4
 T _____ R _____
 T _____ R _____
 T _____ R _____

2. Property Controlling in Section S _____ T _____ R _____
 S _____ T _____ R _____

3. Miscellaneous Property in Sec. S _____ T _____ R _____
 S _____ T _____ R _____

4. Lot No. _____, Recorded Plat _____

5. Private Claims _____

STATE OF MICHIGAN
 MONTCALM COUNTY
 RECORDED

10 AUG 95 3:29 P.M.

VIRGINIA L. KNEPPER
 REGISTER OF DEEDS

Register of Deeds Stamp & File Number

I, William Tingley a field surveyor on October 20, 1993, do hereby certify that under requirements of P.A. 74, Michigan P.A. of 1970, the corner points mentioned in lines 1 and 2 above were in conformance with regulations and rules therefore as required in the current manual of survey instructions of the United States Department of the Interior, Bureau of Land Management or by a decree of a Court of Law and/or that the corner points mentioned in lines 3, 4 and 5 above were in conformance with the rules of the Michigan Board of Land Surveyors or by a Decree of a Court of Law; established, re-established, monumented, re-monumented, recovered, found as expressed below:

1	A	B	C	D	E	F	G	H	I	J	K	L	M
2	6	5	4	3	2	1							
3													
4	7	8	9	10	11	12							
5													
6	18	17	16	15	14	13							
7													
8	19	20	21	22	23	24							
9													
10	30	29	28	27	26	25							
11													
12	31	32	33	34	35	36							
13													

NOTE: Not more than 4 corners, all in the same town and range, may be recorded on this certificate.

A. Description of original monument and accessories and/or subsequent restoration:
 December 8, 1836 Noah Brookfield, Deputy Surveyor

- Set Post
- Beech 10" N41°E 20 links
- Beech 12" N15°W 45 links

1884 H.M. Caulkins, County Surveyor from Surveyor Notes of Montcalm County Register of Deeds

Reestablished (40.04 chains) from SE Corner 36 and (200.20 chains) from Corner 33 & 34, South Boundary and on Straight line between Corner 1 & 2 and Corner 2 & 3

- North Boundary T10N R7W (2.80 Chains) West of Corner 1 & 2
- New Bearing Tree Pine Stump 28" S55-1/2°W 70 links
- Set Fire Clay Monument and Blacksmith Cinders

1969 G.M. Stevenson #13600

Set Railroad Spike in Bit 184.80' West of Section Corner 1 & 2 T10N R7W as per GLO Notes and 1964 G.M. Stevenson's Survey of Section 36 T11N R7W (index cards).

- Also on card: May 1977 Witness as follows: Telephone Pole S50W 54.0 feet
- Ash 8" S30°E 73.5 feet

June 20, 1977, J. Campbell #15397, Recorded Liber 503 Page 769

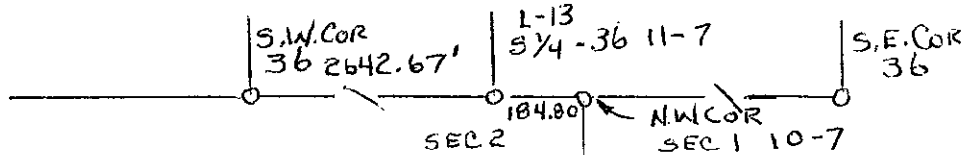
- Found Railroad Spike
- Telephone Pole S52°31' W 53.70 feet
- Power Pole N77°E 131.71 feet
- Power Pole N60°W 103.89 feet

April 3, 1993, W. G. Tingley, #30104

Found Railroad Spike per witnesses of Liber 503, Page 769

B. Description of corner evidence found and/or method applied in restoring or reestablishing corner:

Found Railroad Spike. Dug hole around spike. Went down below base dirt and found no evidence of Fireclay Monument. Accepted Railroad spike as Corner, agreeing with Stevenson's and Campbell's Bearing Trees and H.M. Caulkin's distance (2.80 chains or 184.80 feet) to Corner of 1 and 2 T10-N-R7W. Also agreeing with G.M. Stevenson's distance to the Southwest Corner of Section 36 (2642.67').



C. Description of monument for corner and accessories established to perpetuate locating the position of the corner:

- Set Remonumentation Corner and Monumentation Box.
- Southwest Corner Foundation N20°W 98.32 feet
- Northeast Corner Chain Link Fence S50°W 72.89 feet
- Power Pole N77°E 131.71 feet
- N 1/4 Corner Section 1 T10N R7W East 184.79'

ACCEPTED BY THE MONTCALM COUNTY SURVEY PEER GROUP AS THE OFFICIAL CORNER UNDER MICHIGAN PUBLIC ACT 346 OF 1930 AT A MEETING HELD 10/11/95

This corner is accepted as a careful and faithful perpetuation of the position of the original corner

Signed by William Tingley Date 19 April 1995
 William Tingley, PS, Chairman

Surveyor's Michigan License No. 30104

LIBER 3 PAGE 183