

JAN 31 2001

LIBER 3121 PAGE 648

LAND CORNER RECORDATION CERTIFICATE
Filing Requirement of Act 74, Mich. P.A. 1970

STATE OF MICHIGAN
COUNTY OF MUSKEGON
RECEIVED FOR RECORD

200 DEC 20 PM 1:48

SECTION

Muskegon
(County)

Located In:

Corner Code #

- 1. Public Land Survey T 9 N R 14 W C-5
2. Property Controlling in Section S T R
3. Miscellaneous Property in Sec. S T R

Mark Fairchild
REGISTER OF DEEDS

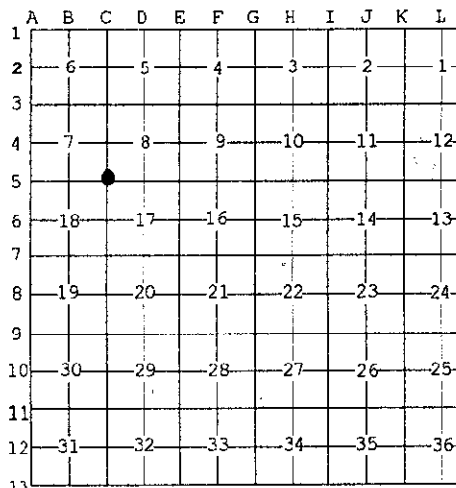
Register of Deeds Stamp & File Number

4. Lot No. , Recorded Plat

5. Private Claims

I, Stephen V. Vallier, in a field survey on November 11, 20 00 do hereby state that under requirements of P.A. 74, Michigan P.A. of 1970, the corner points mentioned in lines 1 and 2 above were in conformance with regulations and rules therefore as required in the current manual of survey instructions of the United States Department of the Interior, Bureau of Land Management or by a decree of a Court of Law and for that the corner points mentioned in lines 3, 4 and 5 above were in conformance with the rules of the Michigan Board of Land Surveyors or by a Decree of a Court of Law; established, re-established, monumented, recovered, found as expressed below:

NOTE: Not more than 2 corners, all in the same town and range, may be recorded on this certificate.



A. Description of original monument and accessories and/or subsequent restoration:

- 1837 John Mullett (G.L.O.) set post.
N 09° E 10" Black Ash 10 Links
S 07° E 8" Black Ash 19 Links

1950's Muskegon County Road Commission's witness sheet notes a wood stake, no witness. Distance of 2610.5' to C-6.

1990 Stan Shackelford of Westshore Consulting found a 1 1/4" x 48" iron pipe in Swanson Road. Distance to the East 1/4 corner (C-6) measures 2610.56' and checks with 1/8 line of occupation of East line of section. Iron Pipe was reset with a 4" x 30" cast-iron "County Surveyor Monument" recorded in L.C.R.C., Liber 1545, Page 273.

- N 84° W 41.95' Corner Post
N 43° W 50.30' Power Pole
E 19.91' Set 1/2" iron rod
S 14° E 283.23' Power Pole
S 06° W 178.64' Chiseled "X" in W end of Culvert



B. Description of corner evidence found and/or method applied in restoring or reestablishing corner:

A 4" x 30" cast-iron monument containing a County Surveyors Cap was found in the centerline of North and South gravel road and fence line to the West. Witnesses verified with L.C.R.C., Liber 1545, Page 273. Position of the existing corner was accepted due to historical usage at documentation.

C. Description of monument for corner and accessories established to perpetuate locating the position of the corner:

- A 4" x 30" cast-iron monument containing a "County Surveyors Cap" was found.
N 43° W 50.30' Power Pole Found nail on SW side
S 14° E 283.23' Power Pole Found nail on W side
E 19.91' Found iron rod recorded in LCRC, Liber 1545, Page 273.
S 06° W 178.93' "X" in W end of C/P culvert
N 84° W 42.05' Corner Post Found P.K. nail on N side

POSITION OF SAID RECORDED CORNER REVIEWED & RATIFIED BY MUSKEGON COUNTY PEER GROUP IN ACCORDANCE WITH P.A. 345, OF 1990

Signed by [Signature]
Surveyor's Michigan License No. 28428

Date 12/19/00

A2116