

JAN 31 2001

LIBER 3124 PAGE 921

STATE OF MICHIGAN
COUNTY OF MUSKEGON
RECEIVED FOR RECORD

200 DEC 29 AM 11: 23

SECTION

LAND CORNER RECORDATION CERTIFICATE
Filing Requirement of Act 74, Mich. P.A. 1970

For corners in

Muskegon (County)	Located in:	Corner Code #
1. Public Land Survey	T <u>9N</u> R <u>14W</u>	<u>D-5</u>
	T <u> </u> R <u> </u>	<u> </u>
	T <u> </u> R <u> </u>	<u> </u>
	T <u> </u> R <u> </u>	<u> </u>
2. Property Controlling in Section	S <u> </u> T <u> </u> R <u> </u>	<u> </u>
	S <u> </u> T <u> </u> R <u> </u>	<u> </u>
3. Miscellaneous Property in Sec.	S <u> </u> T <u> </u> R <u> </u>	<u> </u>
	S <u> </u> T <u> </u> R <u> </u>	<u> </u>

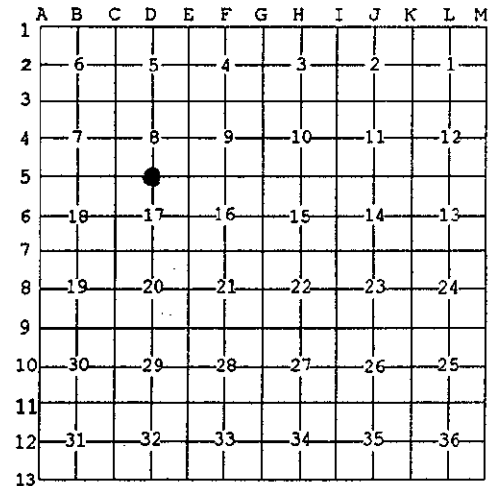
Mark Fairchild
REGISTER OF DEEDS

Register of Deeds Stamp & File Number

4. Lot No. _____, Recorded Plat _____
5. Private Claims _____

I, Ralph W VanRiper, in a field survey on Dec. 22, 2000 do hereby state that under requirements of P.A. 74, Michigan P.A. of 1970, the corner points mentioned in lines 1 and 2 above were in conformance with regulations and rules therefore as required in the current manual of survey instructions of the United States Department of the Interior, Bureau of Land Management or by a decree of a Court of Law and/or that the corner points mentioned in lines 3, 4 and 5 above were in conformance with the rules of the Michigan Board of Land Surveyors or by a Decree of a Court of Law; established, re-established, monumented, recovered, found as expressed below:

NOTE: Not more than 2 corners, all in the same town and range, may be recorded on this certificate.



A. Description of original monument and accessories and/or subsequent restoration:

1837 GLO Set Quarter Section Post = Hemlock 24" S28°W 10L & Hemlock 10" N18°E 10L

1950's MCRC Witness Sheets & Current MCRC Witness Book shows nothing at this corner

C F Lewandosk & S V Vallier have used computed point 1/2 way on line between Section Corners for 1/4 Corner

Location in Corn Field

B. Description of corner evidence found and/or method applied in restoring or reestablishing corner:

Set 2 3/4" Cast Iron "County Survey" Monument on line 1/2 way between C-5 and E-5

Location reviewed and ratified by Muskegon County Peer Group 7/11/2000

POSITION OF SAID
RECORDED CORNER
REVIEWED & RATIFIED
BY MUSKEGON COUNTY
PEER GROUP IN ACCORDANCE
WITH P.A. 74 OF 1990
RVR
7/11/00

C. Description of monument for corner and accessories established to perpetuate locating the position of the corner:

Set 2 3/4" Cast Iron "County Survey" Monument - Nothing to Witnesses to

Distance to Section Corners C-5 and E-5 = 2,675.28'



Signed by *Ralph W. Van Riper*
Surveyor's Michigan License No. 16946

Date 12/26/00