

**SURVEY & REMONUMENTATION**

LIBER **1810** PAGE **17**

APR 28 1995

**LAND CORNER RECORDATION CERTIFICATE**  
Filing Requirement of Act 74, Mich. P.A. 1970

For corners in **COMMISSION**

<u>MUSKEGON</u> (County)	Located In:	Corner Code #
1. Public Land Survey	T <u>9N</u> R <u>15W</u>	<u>G-11</u>
	T _____ R _____	_____
	T _____ R _____	_____
	T _____ R _____	_____
2. Property Controlling in Section	S _____ T _____ R _____	_____
	S _____ T _____ R _____	_____
3. Miscellaneous Property in Sec.	S _____ T _____ R _____	_____
	S _____ T _____ R _____	_____

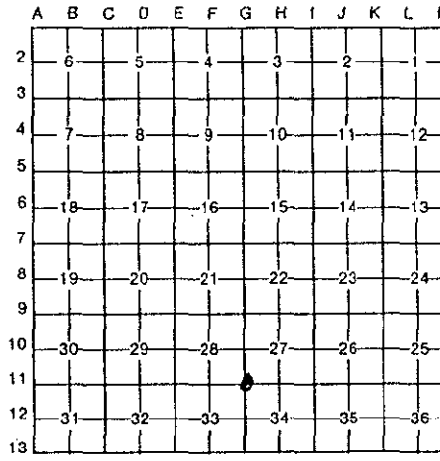
STATE OF MICHIGAN  
COUNTY OF MUSKEGON  
RECEIVED 1994 DEC 27 AM 11:40  
REGISTER OF DEEDS

A1525

Register of Deeds Stamp & File Number

4. Lot No. \_\_\_\_\_, Recorded Plat \_\_\_\_\_
5. Private Claims \_\_\_\_\_

I, STEPHEN V. VALLIER, in a field survey on JULY, 19 94 do hereby certify that under requirements of P.A. 74, Michigan P.A. of 1970, the corner points mentioned in lines 1 and 2 above were in conformance with regulations and rules therefore as required in the current manual of survey instructions of the United States Department of the Interior, Bureau of Land Management or by a decree of a Court of Law and/or that the corner points mentioned in lines 3, 4 and 5 above were in conformance with the rules of the Michigan Board of Land Surveyors or by a Decree of a Court of Law; established, re-established, monumented, re-monumented, recovered, found as expressed below:



**NOTE: Not more than 4 corners, all in the same town and range, may be recorded on this certificate.**

A. Description of original monument and accessories and/or subsequent restoration:

1837 GLO SET SECTION CORNER	1980 LBR. 1199, PG. 517 D. SCHIELE
S 2° W 12 LINKS 18" HEMLOCK	FOUND IRON
N 36° W 18 LINKS 15" BEECH	NE 64.90' P. POLE
1950'S M.C.R.C.	SE 53.32' STEEL FENCE POLE
2" IRON PIPE	SW 51.75' 18" CONC. COLUMN
NNE 89.90' 5" APPLE	NW 41.85' L. POLE
SE 83.15' NW CORNER FOUNDATION	1990 WESTSHORE ENG. LBR. 1550, PG. 121
	FOUND 1" IRON RESET WITH 2 3/4" X 30" CAST IRON MON. WITH COUNTY SURVEY CAP
	N 43° W 41.85' NAIL ON LIGHT POLE

B. Description of corner evidence found and/or method applied in restoring or reestablishing corner: **SEE ATTACHMENT**

FOUND 2 3/4" CAST IRON MON. WITH COUNTY SURVEY CAP  
ACCEPTED POSITION OF CORNER DUE TO HISTORICAL USAGE AND SECTIONAL MEASUREMENTS. ALTHOUGH ORIGIN IS UNCERTAIN CONSISTENT DOCUMENTATION FOR 50 YEARS ± HAS BEEN MAINTAINED (WITNESS LBR. 1550, PG. 121)

N 43° W	41.85'	NAIL ON LIGHT POLE
N 38° E	64.85'	NAIL ON P. POLE
S 39° E	53.32'	NAIL ON METAL FENCE POST
S 64° W	61.85'	CENTERLINE CULVERT SOUTH END
N 65° W	59.75'	CENTERLINE CULVERT NORTH END

*July 5, 1994 SV*

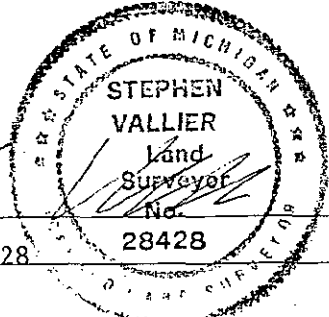
POSITION OF SAID  
RECORDED CORNER  
REVIEWED & RATIFIED  
BY MUSKEGON COUNTY  
FEED GROUP IN ACCORDANCE  
WITH P.A. 345, OF 1990

C. Description of monument for corner and accessories established to perpetuate locating the position of the corner:

FOUND 2 3/4" CAST IRON MONUMENT WITH COUNTY SURVEY CAP
N 43° W 41.85' NAIL ON LIGHT POLE
N 38° E 64.85' NAIL ON P. POLE
S 39° E 53.32' NAIL IN METAL FENCE POST
S 69° W 61.85' CENTERLINE CULVERT SOUTH END
N 65° W 59.75' CENTERLINE CULVERT NORTH END

Signed by *Stephen Vallier* Date *Dec 27, 1994*

Surveyor's Michigan License No. 28428



ATTACHMENT TO LAND CORNER RECORDATION CERTIFICATE

MUSKEGON COUNTY, T9N, R15W, CORNER G-11

SECTION A:

N 38° E	64.85'	NAIL ON P. POLE
S 39° E	64.85'	NAIL ON METAL FENCE POST
S 62° W	61.85'	CENTERLINE CULVERT SOUTH END
N 65° W	59.75'	CENTERLINE CULVERT NORTH END