

LAND CORNER RECORDATION CERTIFICATE
Filing Requirement of Act 74, Mich. P.A. 1970

STATE OF MICHIGAN
COUNTY OF MUSKEGON
RECEIVED FOR RECORD

For corners in

SECTION

Muskegon (County)	Located In:	Corner Code #
1. Public Land Survey	T <u>9 N</u> R <u>16 W</u>	<u>G - 5</u>
	T _____ R _____	_____
	T _____ R _____	_____
	T _____ R _____	_____
2. Property Controlling In Section	S _____ T _____ R _____	_____
	S _____ T _____ R _____	_____
3. Miscellaneous Property in Sec.	S _____ T _____ R _____	_____
	S _____ T _____ R _____	_____

1998 DEC 29 PM 4: 26

Carrie Carter
REGISTER OF DEEDS

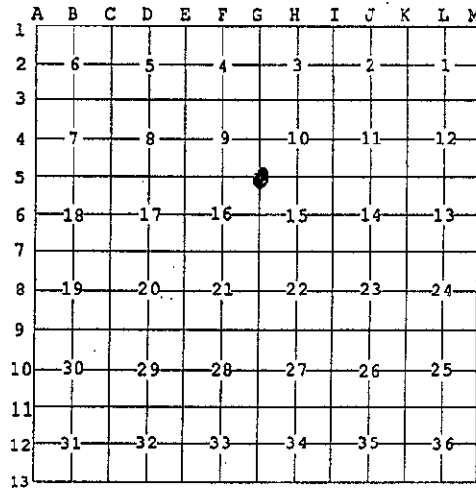
LIBER **2189** PAGE **837**

Register of Deeds Stamp & File Number

4. Lot No. _____, Recorded Plat _____
5. Private Claims _____

I, Stephen V. Vallier, in a field survey on November 4, 1997, do hereby state that under requirements of P.A. 74, Michigan P.A. of 1970, the corner points mentioned in lines 1 and 2 above were in conformance with regulations and rules therefore as required in the current manual of survey instructions of the United States Department of the Interior, Bureau of Land Management or by a decree of a Court of Law and /or that the corner points mentioned in lines 3, 4 and 5 above were in conformance with the rules of the Michigan Board of Land Surveyors or by a Decree of a Court of Law; established, re-established, monumented, recovered, found as expressed below:

NOTE: Not more than 2 corners, all in the same town and range, may be recorded on this certificate.



A. Description of original monument and accessories and/or subsequent restoration:

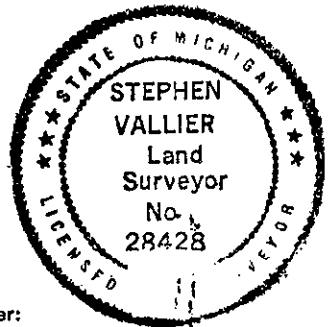
- 1837** G.L.O. set post - J. Mullett.
S 38° E 24 Links 8" Hemlock
S 05° W 28 Links 15" Beech
- 1885** No witnesses - County Survey Records - Van Zlingszen. Records do not indicate if corner was set or found.
- 1950** Plat of Wynwood Subdivision - M. Buck.
Northeast corner of Plat.
- 1960** M.D.O.T. U.S. 31 alignment map.

POSITION OF SAID
RECORDED CORNER
REVIEWED & RATIFIED
BY MUSKEGON COUNTY
PEER GROUP IN ACCORDANCE
WITH P.A. 345, OF 1990

B. Description of corner evidence found and/or method applied in restoring or reestablishing corner:

Found boat spike 13½" long in monument box. One foot from edge of concrete on Airline Road exit ramp. Evidence indicates position of corner is a perpetuation of G.L.O. corner as found in 1885 County Survey Records.

	1997	1885
Northeast corner to North quarter (Section 16)	2,636.04'	2,635.0'
Northeast corner to Southeast corner (Section 16)	5,320.20'	5,398.0'



C. Description of monument for corner and accessories established to perpetuate locating the position of the corner:

Replaced 13½" long boat spike with 2¾"x30" cast-iron monument with county surveyor's cap in monument box.

S 30° W	39.17'	Anchor Bolt	North side
S 51° E	62.23'	Anchor Bolt	
N 69° W	10.76'	P.K.	Top wood guard rail post
N 15° W	26.69'	P.K.	Top wood guard rail post
N 35° W	70.52'	P.K.	Set in top wood guard rail post
S 70° E	156.78'	Concrete monument	
N 39° W	64.47'	12-18" Twin Oak	Set nail in Southwest side

Signed by *Stephen Vallier* Date Dec 29 1998

Surveyor's Michigan License No. 28428 FORM APPROVED BY MICHIGAN STATE BOARD OF PROFESSIONAL SURVEYORS, JAN. 23, 1971

Advised A2014