

SURVEY & REMONUMENTATION

LIBEP **2052** PAGE **621**

APR 03 1998

LAND CORNER RECORDATION CERTIFICATE
Filing Requirement of Act 74, Mich. P.A. 1970

STATE OF MICHIGAN
 COUNTY OF MUSKEGON
 RECEIVED FOR RECORD

1997 DEC 30 PM 3:23

Carrie Carter
 REGISTER OF DEEDS

For corners in SECTION _____
 Muskegon _____

(County)

Located In:

Corner Code #

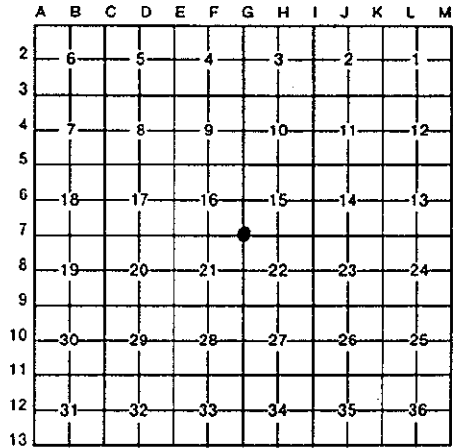
1. Public Land Survey	T	9N	16W	G-7
	T	_____	_____	_____
	T	_____	_____	_____
	T	_____	_____	_____
2. Property Controlling in Section	S	_____	_____	_____
	S	_____	_____	_____
3. Miscellaneous Property in Sec.	S	_____	_____	_____
	S	_____	_____	_____

Register of Deeds Stamp & File Number

4. Lot No. _____, Recorded Plat _____
 5. Private Claims _____

I, Stephen V. Vallier P.S., in a field survey on December 5, 1997, do hereby certify that under requirements of P.A. 74, Michigan P.A. of 1970, the corner points mentioned in lines 1 and 2 above were in conformance with regulations and rules therefore as required in the current manual of survey instructions of the United States Department of the Interior, Bureau of Land Management or by a decree of a Court of Law and/or that the corner points mentioned in lines 3, 4 and 5 above were in conformance with the rules of the Michigan Board of Land Surveyors or by a Decree of a Court of Law; established, re-established, monumented, re-monumented, recovered, found as expressed below:

NOTE: Not more than 4 corners, all in the same town and range, may be recorded on this certificate.



A. Description of original monument and accessories and/or subsequent restoration:

- 1837 G.L.O. Set Post J. Mullett
 South 23° East 17 Links 30 Inch Black Oak
 South 86° West 13 Links 12 Inch Pine
- 1885 Muskegon Surveyor Von Zlinger Iron Shown Assumed G.L.O. Perpetuation
- 1989 L.C.R.C. Liber 1500, Page 590 S. Shackelford
 Found P.K. Nail Reset With 4 Inch by 30 Inch Cast Iron Monument With County Surveyor Cap

(See Attached)

B. Description of corner evidence found and/or method applied in restoring or reestablishing corner:

Found 4 Inch Cast Iron Monument in Monument Box With County Surveyor Cap.

- North 40° West 77.29 Feet 14 Inch Pine Found Nail North Side
- North 40° East 94.90 Feet Power Pole Found Nail South Side

Historical Usage and Known Documentation Support Location of Corner

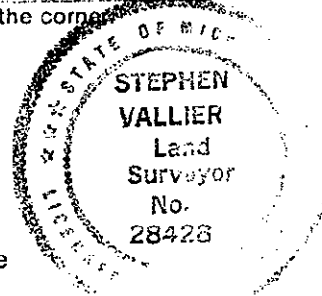
POSITION OF SAID
 RECORDED CORNER
 REVIEWED & RATIFIED
 BY MUSKEGON COUNTY
 PEER GROUP IN ACCORDANCE
 WITH P.A. 345, OF 1990

11/4/97

C. Description of monument for corner and accessories established to perpetuate locating the position of the corner:

4 Inch by 30 Inch Cast iron Monument in Monument Box With County Surveyor Cap.

- North 40° West 77.29 Feet 14 Inch Pine Found Nail North Side
- North 40° East 94.90 Feet Power Pole Found Nail South Side
- North 30° West 88.22 Feet Power Pole Found Nail North Side
- North 65° East 80.12 Feet Centerline Fire Hydrant
- South 60° East 75.77 Feet Power Pole
- South 60° West 59.46 Feet Power Pole Found Nail Northwest Side
- North 64° East 94.95 Feet Power Pole Found Nail Northeast Side
- South 38° East 125.48 Feet Power Pole Found Nail Northeast Side



Signed by *Stephen V. Vallier* Date December 15, 1997
 Surveyor's Michigan License No. 28428

A1931

SURVEY &
REMONUMENTATION

APR 03 1998

SECTION

T9N R16W G-7

South 40° West	43.55 Feet	Light Pole	Found Nail Southwest Side
North 71° West	83.88 Feet	10 Inch Sassafras	Found Nail North Side
North 69° West	95.82 Feet	Power Pole	Found Nail North Side
North 50° West	77.00 Feet	12 Inch Pine	Found Nail Southwest Side