

SURVEY & REMONUMENTATION

MAR 06 1998

LIBEP 2052 PAGE 572

Common Lot
STATE OF MICHIGAN
COUNTY OF MUSKEGON
RECEIVED FOR RECORD

1997 DEC 30 PM 3:09

LAND CORNER RECORDATION CERTIFICATE
Filing Requirement of Act 74, Mich. P.A. 1970

SECTION

For corners in
Muskegon
(County)

Located In:	Corner Code #
Also 9N 17W	II ✓
T 10N R 17W	I 13
T _____ R _____	_____
T _____ R _____	_____
T _____ R _____	_____
T _____ R _____	_____
S _____ T _____ R _____	_____
S _____ T _____ R _____	_____
S _____ T _____ R _____	_____
S _____ T _____ R _____	_____

Carris Carter
REGISTER OF DEEDS

Register of Deeds Stamp & File Number

4. Lot No. _____, Recorded Plat _____
5. Private Claims _____

	A	B	C	D	E	F	G	H	I	J	K	L	M
2	6		5		4		3		2		1		
3													
4	7		8		9		10		11		12		
5													
6	18		17		16		15		14		13		
7													
8	19		20		21		22		23		24		
9													
10	30		29		28		27		26		25		
11													
12	31		32		33		34		35		36		
13													

I, Ralph W VanRiper in a field survey on Oct 30, 19 97, do hereby certify that under requirements of P.A. 74, Michigan P.A. of 1970, the corner points mentioned in lines 1 and 2 above were in conformance with regulations and rules therefore as required in the current manual of survey instructions of the United States Department of the Interior, Bureau of Land Management or by a decree of a Court of Law and/or that the corner points mentioned in lines 3, 4 and 5 above were in conformance with the rules of the Michigan Board of Land Surveyors or by a Decree of a Court of Law; established, re-established, monumented, re-monumented, recovered, found as expressed below:

NOTE: Not more than 4 corners, all in the same town and range, may be recorded on this certificate.

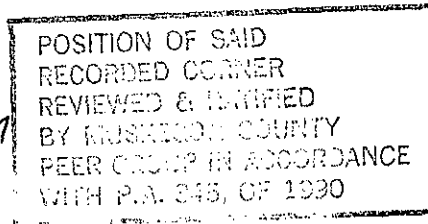
A. Description of original monument and accessories and/or subsequent restoration:

Section Corner common to Sections 2 and 3, T9N R17W also Sections 34 and 35, T10N R17W
2 Post set by GLO Surveyors in 1837, 14 Links (9.24') apart. The East post being the corner between Sections 34 and 35, the West post being the corner between Sections 2 and 3.
East Post: W Oak 10" N38°E 10L and Pine 10" N32°W 8L. West Post: W Oak 21" S9°E 25L and W Oak 12" S27°W 36L. MCRC 1950's Witness Map does not included this area. MCRC Current Witness Book and LCRC L 1500, P 595; 2 3/4" Cast Iron County Survey Monument in Monument Box: N35°E Top of Fire Hyd. 42.60'; S45°E nw cor. conc. slab 52.63'; S55°W Nail SE Side P. Pole; N45°W "X" of back walks 45.90'; N35°W USGS conc marker 22.63. All historical usage and documentation indicates that 1 common corner has been used for all 4 Sections, therefore

B. Description of corner evidence found and/or method applied in restoring or reestablishing corner: accepted the 1 corner.

Found 2 3/4" Cast Iron County Survey Monument in Monument Box

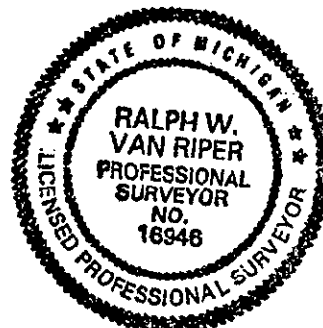
Accepted corner based on Historical usage and documentation.



Description of monument for corner and accessories established to perpetuate locating the position of the corner:

2 3/4" Cast Iron County Survey Monument in Monument Box

- 43° E 44.68' Set PK Nail in W Side of Power Pole
- 62° E 93.05' Found Spike in N Side of Power Pole
- 24° E 52.62' NW corner of Concrete Slab at Bldg. # 2389
- 05° E 90.55' Set PK Nail in W Side of Utility Pole
- 60° W 42.00' Found Spike in SE Side of Power Pole
- 07° W 89.61' Set PK Nail in E Side of Guy Pole



red by Ralph W. Van Riper Date Dec. 26, 1997

eyor's Michigan License No. 16946

41892