

JAN 31 2001

LIBER 3121 PAGE 893

LAND CORNER RECORDATION CERTIFICATE
Filing Requirement of Act 74, Mich. P.A. 1970

STATE OF MICHIGAN
COUNTY OF MUSKEGON
RECEIVED FOR RECORD

2001 DEC 21 PM 1:00

SECTION

For corners in

<u>Muskegon</u> (County)	Located In:	Corner Code #
1. Public Land Survey	T <u>10N</u> R <u>14W</u>	<u>E-3</u>
	T _____ R _____	_____
	T _____ R _____	_____
	T _____ R _____	_____
2. Property Controlling in Section	S _____ T _____ R _____	_____
	S _____ T _____ R _____	_____
3. Miscellaneous Property in Sec.	S _____ T _____ R _____	_____
	S _____ T _____ R _____	_____

Mark Fairchild
REGISTER OF DEEDS

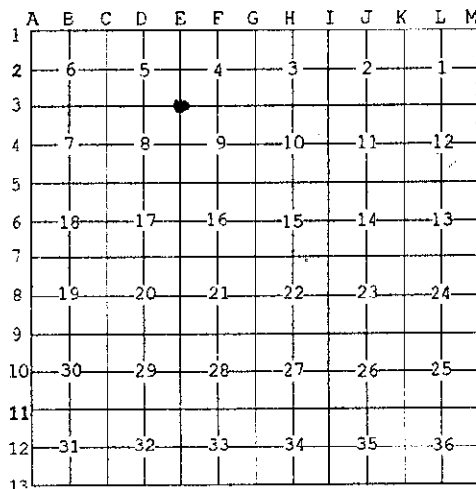
Register of Deeds Stamp & File Number

4. Lot No. _____, Recorded Plat _____

5. Private Claims _____

I, Stephen V. Vallier, in a field survey on October 3, 2000, do hereby state that under requirements of P.A. 74, Michigan P.A. of 1970, the corner points mentioned in lines 1 and 2 above were in conformance with regulations and rules therefore as required in the current manual of survey instructions of the United States Department of the Interior, Bureau of Land Management or by a decree of a Court of Law and /or that the corner points mentioned in lines 3, 4 and 5 above were in conformance with the rules of the Michigan Board of Land Surveyors or by a Decree of a Court of Law; established, re-established, monumented, recovered, found as expressed below:

NOTE: Not more than 2 corners, all in the same town and range, may be recorded on this certificate.



A. Description of original monument and accessories and/or subsequent restoration:

1837 John Mullet (G.L.O.) set post.
S 14° E 14" Maple 25 Links
N 13° W 6" Hemlock 20 Links

1925 Muskegon County Road Commission - Ed Scharmer found a 1 1/2" iron pipe recorded on Page 95 the an old County survey records.
SW nail in corner fence post 43.55'
N 60° W Nail in the fourth post from the corner, 56.90'
N 00° E Nail in the corner fence post, 24.85'

1975 Muskegon County Road Commission - John Lazarock found a 1/2" iron rod recorded in L.C.R.C., L. 1064, Pg. 552.
N 25.37' Corner fence post
NW 77.50 P. Pole
SW 59.83' T. Pole

B. Description of corner evidence found and/or method applied in restoring or reestablishing corner:

In October 2000, a 1/2" iron rod was found in the centerline of the road intersection, which is the same as in L.C.R.C. recorded in L. 1064, Pg. 552. Witnesses are obliterated.

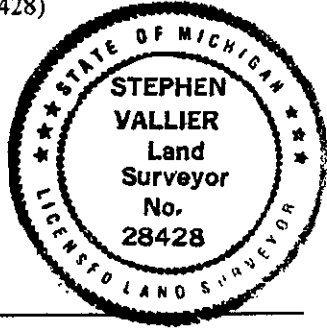
The position of the existing corner was accepted due to it's historical usage and documentation.

C. Description of monument for corner and accessories established to perpetuate locating the position of the corner:

Replaced the 1/2" iron rod with a 2 3/4"x 30" cast-iron monument containing a "County Survey" cap (No. 28428)

N 28° E 71.36' 8" Elm Set 20 D nail on the S. side.
S 50° E 49.98' Guy Pole w/St. Light Set 20 D nail on the W. side.
S 15° E 98.61' 12" Elm Set 20 D nail on the W. side.
S 41° W 56.40' Centerline Steel fence post
N 49° W 62.79' P. Pole w/ transformer Found nail.

POSITION OF SAID *Revised*
RECORDED CORNER
REVIEWED & RATIFIED *9/5/00*
BY MUSKEGON COUNTY
PEER GROUP IN ACCORDANCE
WITH P.A. 345, OF 1990



Signed by *Stephen V. Vallier*
Surveyor's Michigan License No. 28428

Date 12/19/00

A 2175